

The Relationship between Salinity and Bacterioplankton in Three Relic Coastal Ponds (Macchiatonda Wetland, Italy)

Matteo Evangelisti¹, Domenico D'Amelia², Gustavo Di Lallo¹,
Maria Cristina Thaller¹, Luciana Migliore¹

¹Department of Biology, Tor Vergata University, Rome, Italy

²Riserva Naturale Regionale Macchiatonda, Rome, Italy

Email: matteo_eva82@yahoo.it

Received ***** 2013

Copyright © 2013 Matteo Evangelisti *et al.* This is an open access article distributed under the Creative Commons Attribution License, which permits unrestricted use, distribution, and reproduction in any medium, provided the original work is properly cited.

ABSTRACT

The great environmental importance of wetlands is linked to the high biodiversity of flora and fauna they support, so that the international Ramsar Convention focused on these areas and highlighted the need to preserve them. The bacterial communities that thrive in these ecosystems play a key role in regulating the local biogeochemical processes and yet their distribution, abundance and dynamics are poorly known. This work is aimed to study the bacterial assemblages over a year long, to contribute to the understanding of the natural processes occurring in wetlands at variable salinity. The knowledge of bacterial groups, species or assemblages can provide a useful bioindicator for conservation and restoration efforts. Macchiatonda Natural Reserve (Santa Severa, Rome, Italy) is a relic ecosystem, once found along the entire Tyrrhenian coast. This wetland encompasses three coastal ponds with different salinity, where both peculiar vegetation and highly diverse migratory and resident avifauna can be found. This ancient system has been scarcely investigated and nothing is known about its microbial community. The molecular metagenomic analyses performed to investigate the salinity/bacterioplankton relationship, highlighted differences in the bacterial structure, between ponds and seasons. Analogous trends in SSCP profiles, Shannon Index, and bacterial composition (16S) were observed in the two saltier ponds, whereas the entire set of results was different for the less salty one. The species diversity in the three ponds varied according the salinity gradient, with the maximum diversity corresponding to a salt concentration range between 20 and 30. At higher and lower salinity, the microbial diversity lowers, according to the “Intermediate Disturbance Hypothesis”.

Keywords: Bacterioplankton; Coastal Ponds; Diversity; Salinity; SSCP; Wetlands

1. Introduction

The great environmental importance of wetland areas is linked to the high biodiversity of the flora and fauna they support, so that the international Ramsar Convention, already in 1971, focused on these areas, highlighting the need to preserve them. Wetlands prevent coastal erosion and increase the productivity of the coast, being focal points of biological diversity [1,2]. The term “wetlands” encompasses different kind of sites, all sharing a large productivity and a limited depth, and playing a significant role in coastal biogeochemical cycles. Wetlands act as natural purifiers, especially for phosphorus and nitrogen, which are retained and made bioavailable to higher trophic levels [3-5]. The bacterial communities that

thrive therein play, of course, a key role in these processes [6,7], and their diversity depends on environmental factors.

Both abiotic and biotic factors, indeed, can bias the survival of all the bacterial taxa or some of them, so determining both quantitative and qualitative differences in the bacterial community composition. A typical example of such an environmental factor is salinity, which varies across natural aquatic systems due to differences in the ratio of precipitation to evaporation [8].

To monitor the diversity of the microbial components in salty wetlands will help to understand the influence of salinity on the dynamics of the bacterial community that thrive therein, and to develop environmental indicators and strategies to improve the preservation of these eco-

systems [9,10].

The aim of this study was to analyse the seasonal variation of the bacterial community in the wetland of Macchiatonda, a natural reserve located North of Rome (Italy). Three ponds, which differ mainly for their salinity, so allowing to evaluate the effect of this factor on bacterioplankton diversity and composition, form the Macchiatonda wetland.

2. Material and Methods

2.1. Sampling Area

The Macchiatonda Nature Reserve is a 250 hectares-wide relict drainage area [11] on the Tyrrhenian coast, located 50 km North of Rome, within the Santa Marinella municipality. It encloses a wetland area of standing waters spanning for about 1 km along the coast, and consisting of three distinct coastal ponds (**Figure 1**). Two of these, Alberobello and Piscinula, are close to the waterline and undergo marine ingressions during sea storms; the third one, Didattico (the Italian for “Educational”), is located more inland, where there is not direct seawater input [12].

The sampling strategy was defined after conducting a preliminary collection of data about the abiotic characteristics of the ponds. A single sampling station (Station 1) was chosen in Didattico, that is an artificial circular pond of constant depth, (about 1.5 mt when completely filled), where the water forms a ring around a central circular islet.

Two sampling stations were chosen in each Alberobello and Piscinula ponds, which are natural wetlands.

Alberobello pond is formed by a net of channels (sta-

tion 2, max depth about 60 cm), carrying water to a major water hole (Station 3, max depth about 90 cm). Piscinula pond is a continued wetland with little islands inside, with a shallower portion (Station 4, max depth 60 cm) and a deeper area (Station 5, max depth 1 mt) at the South Eastern edge of the reserve.

The sampling stations were identified in situ by GPS coordinates (**Table 1**). Samples were taken from the 5 stations, in June, September, December 2009 and March 2010, in the late morning (10 - 12 a.m.).

2.2. Field Measures and Sampling

In each sampling station, temperature, salinity and pH were measured with a multiparametric probe Multi 340i (WTW, Udine, Italy). Salinity was measured using the Practical Salinity Scale. Soon after the measurements were taken, five liters of water were collected from each sampling station.

The water samples were kept cool and under the dark during transport to the laboratory, then stored (at 4°C under dark), until processed for microbiological analyses (within 6 hours).

2.3. Bacterial Community DNA Extraction

Five 1 L aliquots, from each sample were centrifuged at 15,000 g for 20 min to proceed to DNA extraction [13]. The DNA extraction followed the protocol described in Rossolini *et al.* [14] with slight modifications inserted from Zhou *et al.* [15]. Each pellet was mixed with 1 ml of extraction buffer Solution 1 (50 mM Tris-HCl pH 8, 20% sucrose, 50 mM EDTA, 10 mg/ml lysozyme) and kept 30 min at 37°C. The samples were then treated with



Figure 1. Geographical localization of the sampling stations in the Macchiatonda wetland.

Table 1. UTM-RD50 coordinates of the sampling stations.

Station	Pond	Zone	East	North
1	Didattico	32T	747143	4654014
2	Alberobello	32T	747302	4653953
3	Alberobello	32T	747661	4653870
4	Piscinula	32T	747889	4653900
5	Piscinula	32T	748049	4653815

4 ml of extraction buffer Solution 2 (50 mM NaCl, 1% CTAB, 35 μ l of 10 mg/ml proteinase K solution) kept at 37°C for 30 min and shaken by inversion every 10 min. After the shaking treatment, 0.5 ml of 20% Sarkosyl (Sigma-Aldrich, USA) was added, and the samples were incubated at 65°C (2 hs) under gentle inversion. After centrifugation at 6000 g (10 min) at room temperature, the supernatants were collected and mixed with an equal volume of preheated (to 60°C) phenol-chloro-formiso-amyl alcohol (25:24:1) (Applichem, Germany). The aqueous phase was recovered by centrifugation (4000 g) at 4°C and precipitated with sodium acetate 3 M pH 5.2 (1/10 volume) and ethanol (2 volume). The pellet obtained after centrifugation at 15,000 g was rinsed in 70% ethanol (Sigma-Aldrich USA) and stored in 100 μ l TE buffer at -20°C until PCR amplification. The metagenomic DNA extracted from the aliquots coming from the same station were pooled and subjected to the SSCP analysis.

2.4. PCR Amplification of 16S rRNA

PCR amplification targeting bacterial 16S rRNA genes was performed with forward primer Com1 (5'-CAGCA GCCGCGGTAA TAC-3' positions 519 to 536) and reverse primer Com2Ph (5'-CCGTCAATTCCTTTGAGT TT-3' positions 907 to 926). Reverse primer was phosphorylated at 5' end. Both primers hybridize to phylogenetically conserved regions within the 16S rRNA genes and amplify a 407 bp fragment encompassing the two phylogenetically highly variable regions, V4 and V5 [16,17]. Amplification reactions were carried out in a 100 μ l volume with 100 pmol of each primer in GoTaq Green Master Mix buffer (Promega, Madison, W.I.) and 2 μ l of the DNA solution in TE buffer diluted 1:30 [18]. The following cycling conditions were used: 3 min at 94°C, 30 cycles (1 cycle consists of 1 min at 94°C, 1 min at 50°C, and 70 s at 72°C), and 5 min at 72°C. PCR products were purified with E.Z.N.A. Cycle-Pure Kit (OMEGA bio-tek, USA).

2.5. SSCP Analysis

SSCP analysis was done according to Schwieger and Tebbe [16]. PCR products, containing both the phos-

phorylated and the unphosphorylated strands were then processed. The phosphorylated strand was removed with λ -exonuclease digest (Fermentas, Lithuania) according to the manufacturer's instructions. Single-stranded DNA was purified with E.Z.N.A. MicroElute Cycle-Pure Kit (OMEGA bio-tek, USA) and resuspended in 10 μ l of TE buffer. Before the electrophoretic run, 3.5 μ l of single-stranded DNAs were mixed with an equal volume of denaturing loading buffer (95% formamide, 10 mM NaOH, 0.25% bromophenol blue, 0.25% xylene cyanol). Samples were incubated at 95°C for 2 min and immediately cooled on ice. The samples were subjected to electrophoresis in a 0.625 \times MDE gel (Lonza, Switzerland) with 1 \times TBE buffer. The gels (16 cm in length, 0.4 mm in thickness) were run at 250 V, 8 mA for 17 h at 25°C in an adjustable slab gel kit (C.B.S. Scientific Co., USA). The gels were silver stained according to the procedure of Bassam *et al.* [19]. Single bands from SSCP profiles were excised with a sterilized scalpel, transferred to microtubes containing 50 μ l of crush and soak buffer (0.5 M ammonium acetate, 10 mM magnesium acetate, 1 mM EDTA, 0.1% SDS) and incubated at 37°C for 3 h. The DNA was precipitated with ethanol, centrifuged and resuspended in 12 μ l of TE buffer. For each sample, 2 μ l of DNA solution were reamplified under the same conditions described above and the PCR product was standard sequenced by automated capillary sequencing (MacroGen Europe, The Netherlands).

To identify the closest taxon represented by a single band, each sequence was compared with those available in the Ribosomal Database Project (RDP; Maidak *et al.*, 1997) and subjected to BLAST analysis using the National Center for Biotechnology Information database [20].

2.6. Statistical Analysis

2.6.1. Cluster Analysis

Similarity scores between the different PCR-SCCP fingerprinting from the samples were performed using the Jaccard correlation coefficient. The cluster analysis and dendrogram generation were carried out with the Phoretix 1D, TotalLab software (Phoretix International, United Kingdom).

Non metric Multi Dimensional Scaling (n-MDS; PAST software version 1.34 [21]) was used to analyze the fingerprintings. The software calculates a score of the goodness of fit for data points, named stress; when the stress value is lower than 0.2 the representation of the relationships between samples is acceptable.

2.6.2. NPMANOVA

The non-parametric multivariate ANOVA (NPMANOVA) was used to determine significant differences between

SSCP banding profiles groups [22] using PAST software version 1.34 [21].

2.6.3. Shannon-Wiener Index

The SSCP bacterial profile represents the fingerprint of one sample (one station, one season) and shows the presence/absence of each taxon. The image analysis software assesses the presence or the absence of each band and its intensity, and quantifies the fingerprint of each lane. On this basis, fingerprints can be compared to each other. The Phoretix 1D, TotalLab (Phoretix International, UK) software carries out a density profile, detecting the bands, and calculating the relative contribution of each band to the total band intensity in each lane, after subtracting a rolling disk background value. This density profile was used to determine the Shannon-Weaver Diversity Index (H') for each line.

3. Results

3.1. Abiotic Factors

In the three ponds, temperature and salinity show a clear seasonal cycle, while pH remains mostly constant (**Table 2**). Temperature varies seasonally, the lowest values are found in December (3°C - 5°C) and the highest in June (26°C - 31°C). Salinity values are always higher in Alberobello and Piscinula ponds, than in Didattico. In the ponds Alberobello and Piscinula the lowest values are found in March (13 - 23) and the highest in June/September (43 - 55), respectively. In the Didattico pond, the lowest salinity value is found in March (6.5), the highest in September (22). Salinity varies in ponds according to differences in the ratio of precipitation to evaporation. The yearlong rainfall rate is reported in **Table 2**. Depending on the low rainfall rate in summer, a minimum water level is reached in all ponds during the summer/autumn season. Particularly, due to the sloping gradient of the Alberobello pond, Station 2 remains almost completely dry from July until the autumn rains (the photograph of the dry site is in the supplemental material). Dryness favors anoxic conditions and slight acidification; as a result, in the Alberobello Station 2, pH drops to 6.1 in September. Differently pH values in the Alberobello Station 3 and in Piscinula pond (both Stations), range annually between 7.7 and 8.8. In the Didattico pond, pH ranges annually between 8.2 and 9.0.

3.2. Bacterial SSCP Profiles Analysis

Alberobello and Piscinula showed similar fingerprints (NPMANOVA, n.s.), while Didattico fingerprints are significantly different to both (NPMANOVA, $p < 0.05$; **Figure 2**). Alberobello and Piscinula reached the highest diversity in June (H' between 2.18 and 2.59; **Table 3**), while their lowest diversity was found in the period from

Table 2. Temperature, salinity, and pH values in the five sampling stations from July 2009 to March 2010 (J = July, S = September, D = December and M = March).

	Ponds				
	Didattico	Alberobello		Piscinula	
	St. 1	St. 2	St. 3	St. 4	St. 5
T (°C)					
<i>J</i>	26.4	28.2	30.2	31.4	26.5
<i>S</i>	25.6	23.2	23.2	23.4	22.8
<i>D</i>	4.2	4.9	4.0	3.4	2.8
<i>M</i>	14.3	16.0	14.3	14.5	14
S (ppt)					
<i>J</i>	6.60	30.00	20.20	20.70	31.70
<i>S</i>	22.01	42.86	46.07	50.98	54.73
<i>D</i>	12.08	21.06	26.01	17.70	18.26
<i>M</i>	6.51	13.90	16.31	19.00	23.00
pH					
<i>J</i>	9.00	7.70	7.90	8.10	8.10
<i>S</i>	8.73	6.13	7.87	8.87	7.83
<i>D</i>	8.41	7.90	8.00	8.75	8.63
<i>M</i>	8.24	7.83	8.16	8.31	8.21

Table 3. Diversity of bacterial component, as Shannon Index (H'), from SSCP fingerprints of samples collected in the five sampling stations from June 2009 to March 2010.

	H'			
	June	September	December	March
St. 1 Didattico	1.98	2.43	2.29	2.04
St. 2 Alberobello	2.18	1.65	1.08	2.03
St. 3 Alberobello	2.48	2.18	2.14	2.08
St. 4 Piscinula	2.27	2.06	2.10	2.25
St. 5 Piscinula	2.59	2.01	2.13	2.54

September to December (H' between 2.01 and 2.18; **Table 3**). Didattico reaches the highest diversity from September to December (H' from 2.43 to 2.29; **Table 3**), while lower values were found in June and March (H' from 1.98 to 2.04; **Table 3**). To confirm the similarities between Alberobello and Piscinula, the fingerprint patterns of the four stations were further analyzed by cluster analysis and n-MDS. The results depicted in **Figure 2(b)** show how the two ponds cluster together in three groups according to the seasons.

One cluster includes all June samples, the other the September ones and the last group includes March and December samples.

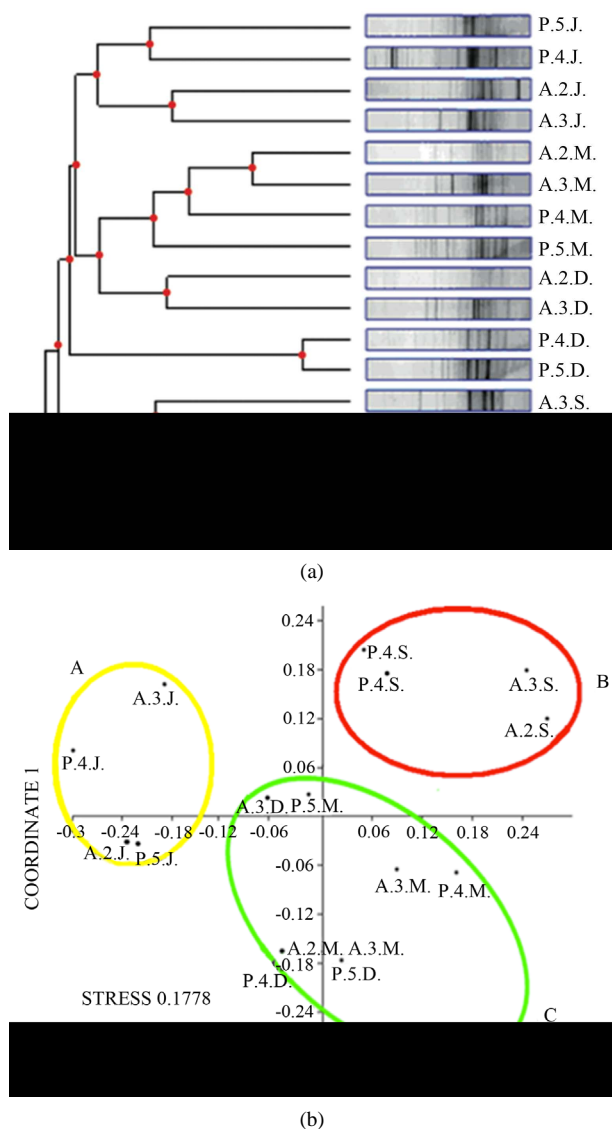


Figure 2. (a) Cluster analysis of SSCP profiles from the three ponds (in the different sampling stations and seasons). Each sample is identified by a 3 letters code: the 1st letter represents the site (D = Didattico, A = Alberobello, P = Piscinula), the 2nd the sampling station (1 = St. 1, 2 = St. 2, 3 = St. 3, 4 = St. 4, 5 = St. 5) and the 3rd the season (J = June, S = September, D = December, M = March). (b) n-MDS analysis of SSCP profiles from Alberobello and Piscinula, in the different sampling stations and seasons. Each sample is identified by the same 3 letters code as in Figure 2(a). Colour circles highlight grouping: June (yellow), September (red), March and December (together, green).

3.3. Sequence Analysis of Selected Bacterial SSCP Bands

The more intense bands in the bacterial SSCP gels were re-amplified and sequenced to identify the prevalent microbial taxa, to the order level. In Alberobello and Piscinula, the prevalent populations belong mainly to Rhodo-

bacterales (α -Proteobacteria) and Flavobacteriales (Bacteroidetes); in Didattico, they belong to Burkholderiales (β -Proteobacteria).

4. Discussion

The yearlong dynamics of the microbial assemblages from three ponds (Alberobello, Piscinula and Didattico) of the Macchiatonda Natural Reserve wetlands (Rome, Italy) has been studied. Alberobello and Piscinula are salty ponds close to the waterline, exposed to marine ingressions and receiving no freshwater input, other than occasional rainfall. The Didattico pond, located more inland, is always less salty. The bacterial communities in the three ponds, analyzed by SSCP, differ between ponds and seasons, mainly driven by both temperature and salinity.

The digital analyses of the bacterial community profiles, the Shannon Index and the dominant bacterial populations (16S sequencing of the more intense bands) are similar in Alberobello and Piscinula and cluster in three groups by season. The first group encompasses the samples collected in June (high salinity), the second those obtained in September (very high salinity), and the last one the samples of March-December (low salinity). In the salty ponds the highest diversity values were found in June, whereas in September and December the diversity was lower. A dramatic reduction of diversity was found in September at Station 2 (in Alberobello) due to the almost complete drying up of this site in the summer months (high temperature and no rainfall), which favored anoxic conditions and acidification.

The entire set of results was different for Didattico, the less salty pond, in which the highest diversity was observed in September, along with the highest salinity values.

The identification of the more intense SSCP bands further confirms the differences in the community composition between Alberobello/Piscinula and Didattico. In fact, the most common bacteria in the first two ponds belong to the order Rhodobacteriales, frequently found in shallow sea coastal waters [23,24] whereas in Didattico, the main populations belong to Burkholderiales, an order commonly found in fresh water ponds, rice paddies, etc. [25-28].

Our results agree both with the observation of Wu *et al.* [29], which stated that salinity plays a key role in the control of the bacterioplankton community at the regional scale, and with the observation of Wang *et al.* [8], which found an increase in microbial richness at increasing salinity in freshwater and saline systems. These results are consistent with the hypothesis that salinity is a dominant environmental force for prokaryotic community composition [30-35].

The pivotal role of salinity in shaping bacterial com-

munity can be highlighted by plotting the bacterial diversity (H' index) of all samples (three ponds and four seasons) against the corresponding salinity value. The relationship between salinity and H' is represented by an inverted U-shaped curve, as drawn in **Figure 3**. Species diversity varies along the salinity gradient reaching maximum diversity at concentrations between 20 and 30; otherwise, diversity decreases at both lower and higher salinity concentrations. The two outliers correspond to the dry and acidified condition of Alberobello Station 2 (September and December).

The U-shaped curve we found represents a non-linear relationship of salinity-diversity in agreement with literature data. In fact, in freshwater systems the microbial diversity is known to be lower than in marine ones [36], while in hypersaline systems the microbial diversity decreases with increasing salt concentration [37-41]. At intermediate salinity levels, the wider niche availability for both halotolerant species and limnotolerant species is responsible for the increase in taxon richness [29].

In the Macchiatonda wetland, the variation of diversity along the salinity gradient can be interpreted in the framework of the Intermediate Disturbance Hypothesis (IDH), as salinity poses limitations to the growth or the survival of microorganisms [42-45]. IDH has not been always able to correlate microbial dynamics to salinity: in fact, in some estuaries [46,47] and in the Baltic Sea [48] the microbial diversity remained constant along a salinity gradient. However, these results refer to ecosystems characterized by different dynamics (estuaries or seas) that cannot be compared to the standing waters of the ponds in Macchiatonda.

5. Conclusions

The Macchiatonda Natural Reserve is a Site of Community Importance (SIC) where both peculiar vegetation and highly diversified migratory and sedentary avifauna can be found [11].

This wetland is regarded as a relic ecosystem, as it is representative of the biodiversity once present along the entire coast, which nowadays has been irretrievably destroyed by land drainage. European actions have been carried out both to restore this wetland habitat [12] and to avoid its regression and the subsequent dystrophic effects that could affect both the riparian flora and the hosted avifauna.

In this study we demonstrated that neighboring basins at different salinity differ in microbial community composition and dynamics. Our data highlight the role of salinity in shaping the bacterial assemblages. In fact, molecular analyses illustrated the differences in the composition of the bacterial assemblage between ponds and seasons. The clear-cut differences between the ponds of Alberobello/Piscinula and Didattico confirm salinity as a

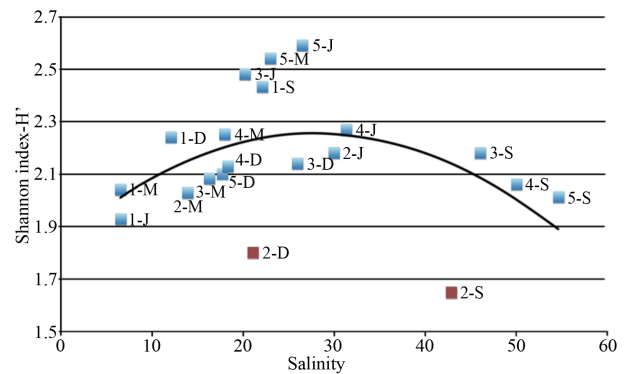


Figure 3. Relationship between species diversity (as Shannon Index, H') determined by the image analysis on the fingerprint of each sample (one station, one season) and salinity determined in the different sampling stations and seasons. Two outliers are found (Alberobello Station 2 September and December), corresponding to dry and acidified condition of the station.

driver of bacterioplankton seasonal diversity.

6. Acknowledgements

This work was supported by “Fondazione CARICIV (Cassa di Risparmio di CIVitavecchia)” 2009 and 2010 research or scholarship grants to MCT and LM, respectively, by commitment of the Comune di Santa Marinella (Rome, Italy).

Thanks are due to Phoretix International, UK, for the trial use of Phoretix 1D, TotalLab.

The authors are grateful to all the Macchiatonda Natural Reserve Rangers and to the entire Tor Vergata laboratory staff, which pleasantly and efficiently helped the Authors during all the phases of the work, in particular thanks are due to Astrid Mejia and Alice Rotini who revised and edited the manuscript. Authors are also grateful to Federica Tamburi for her help in drawing and handling figures.

REFERENCES

- [1] A. M. Anderson, D. A. Haukos and J. T. Anderson, “Habitat Use by Anurans Emerging and Breeding in Playa Wetlands,” *Wildlife Society Bulletin*, Vol. 27, No. 3, 1999, pp. 759-769.
- [2] K. R. Russell, D. C. Guynnand Jr. and H. G. Hanlin, “Importance of Small Isolated Wetlands for Herpetofaunal Diversity in Managed, Young Growth Forests in the Coastal Plain of South Carolina,” *Forest Ecology and Management*, Vol. 163, No. 1-3, 2002, pp. 43-59. doi:10.1016/S0378-1127(01)00526-6
- [3] R. W. Nairn and W. J. Mitsch, “Phosphorus Removal in Created Wetland Ponds Receiving River Overflow,” *Ecological Engineering*, Vol. 14, No. 1-2, 1999, pp. 107-126. doi:10.1016/S0378-1127(01)00526-6
- [4] N. Wang and W. J. Mitsch, “Detailed Ecosystem Model

- of Phosphorus Dynamics in Created Riparian Wetlands,” *Ecological Modelling*, Vol. 126, No. 2-3, 2000, pp. 101-130. [doi:10.1016/S0304-3800\(00\)00260-X](https://doi.org/10.1016/S0304-3800(00)00260-X)
- [5] W. J. Mitsch, J. W. Day, L. Zhang and R. R. Lane, “Nitrate-Nitrogen Retention in Wetlands in the Mississippi River Basin,” *Ecological Engineering*, Vol. 24, No. 4, 2005, pp. 267-278. [doi:10.1016/j.ecoeng.2005.02.005](https://doi.org/10.1016/j.ecoeng.2005.02.005)
- [6] M. M. Brinson, A. E. Lugo and S. Brown, “Primary Productivity, Decomposition and Consumer Activity in Freshwater Wetlands,” *Annual Review of Ecology and Systematics*, Vol. 12, No. 1, 1981, pp. 123-161. [doi:10.1146/annurev.es.12.110181.001011](https://doi.org/10.1146/annurev.es.12.110181.001011)
- [7] R. G. Wetzel, “Wetlands as Metabolic Gates,” *Journal of Great Lakes Research*, Vol. 18, No. 4, 1992, pp. 529-532. [doi:10.1016/S0380-1330\(92\)71320-3](https://doi.org/10.1016/S0380-1330(92)71320-3)
- [8] J. Wang, D. Yang, Y. Zhang, J. Shen, C. van der Gast, M. W. Hahn and Q. Wu, “Do Patterns of Bacterial Diversity along Salinity Gradients Differ from Those Observed for Macroorganisms?” *PlosOne*, Vol. 6, No. 11, 2011, pp. 1-8.
- [9] J. V. McArthur, “Bacteria as Biomonitors,” In: R. B. Rader, D. P. Batzer and S. A. Wissinger, Eds., *Bioassessment and Management of North American Freshwater Wetlands*, John Wiley & Sons, New York, 2001, pp. 249-261.
- [10] M. Merkley, B. R. Russell, J. V. McArthur and D. Eggett, “Bacteria as Bioindicators in Wetlands: Bioassessment in the Bonneville Basin of Utah, USA,” *Wetlands*, Vol. 24, No. 3, 2004, pp. 600-607. [doi:10.1672/0277-5212\(2004\)024\[0600:BABIWB\]2.0.CO;2](https://doi.org/10.1672/0277-5212(2004)024[0600:BABIWB]2.0.CO;2)
- [11] ISPRA, “Repertorio Nazionale Interventi di Ripristino, 3b Lazio ‘Ricostruzione Dell’ Ecosistema Dunale di Macchiatonda,” 2008.
- [12] Riserva Naturale di Macchiatonda, “LIFE Project CO.ME.BIS. Relazione Monitoraggio Interventi di Ripristino,” 2009. <http://www.lifecomebis.eu/comebis.cfm>
- [13] K. H. Boström, K. Simu, Å. Hagström and R. Lasse, “Optimization of DNA Extraction for Quantitative Marine Bacterioplankton Community Analysis,” *Limnology and Oceanography*, Vol. 2, No. 1, 2004, pp. 365-373. [doi:10.4319/lom.2004.2.365](https://doi.org/10.4319/lom.2004.2.365)
- [14] G. M. Rossolini, P. Muscas, A. Chiesurim and G. Satta, “Molecular Cloning and Expression in *Escherichia coli* of the Salmonella Typhi Gene Cluster Coding for Type 1 Fimbriae,” In: F. Cabello, C. Hormaeche and P. Mastroni, Eds., *The Biology of Salmonella*, Nato ASI Series, Plenum Press, New York, 1993, pp. 408-412. [doi:10.1007/978-1-4615-2854-8_51](https://doi.org/10.1007/978-1-4615-2854-8_51)
- [15] J. Zhou, M. A. Bruns and J. M. Tiedje, “DNA Recovery from Soils of Diverse Composition,” *Applied Environmental Microbiology*, Vol. 62, No. 2, 1996, pp. 316-322.
- [16] F. Schwieger and C. C. Tebbe, “A New Approach to Utilize PCR-Single-Strand-Conformation Polymorphism for 16S rRNA Gene-Based Microbial Community Analysis,” *Applied and Environmental Microbiology*, Vol. 64, No. 12, 1998, pp. 4870-4876.
- [17] A. Schmalenberger, F. Schwieger and C. C. Tebbe, “Effect of Primer Hybridizing to Different Evolutionarily Conserved Regions of the Small-Subunit rRNA Gene in PCR-Based Microbial Community Analysis and Genetic Profiling,” *Applied Environmental Microbiology*, Vol. 67, No. 8, 2001, pp. 3557-3563. [doi:10.1128/AEM.67.8.3557-3563.2001](https://doi.org/10.1128/AEM.67.8.3557-3563.2001)
- [18] Y. L. Tsai and B. H. Olson, “Rapid Method for Separation of Bacterial DNA from Humic Substances in Sediments for Polymerase Chain Reaction,” *Applied Environmental Microbiology*, Vol. 58, No. 7, 1992, pp. 2292-2295.
- [19] B. J. Bassam, G. Caetano-Anolles and P. M. Gresshoff, “Fast and Sensitive Silver Staining of DNA in Polyacrylamide Gels,” *Analytical Biochemistry*, Vol. 196, No. 1, 1991, pp. 80-83. [doi:10.1016/0003-2697\(91\)90120-I](https://doi.org/10.1016/0003-2697(91)90120-I)
- [20] S. F. Altschul, W. Gish, W. Miller, E. W. Myers and D. J. Lipman, “Basic Local Alignment Search Tool,” *Journal of Molecular Evolution*, Vol. 215, No. 3, 1990 pp. 403-410.
- [21] Ø. Hammer, D. A. T. Harper and P. D. Ryan, “PAST: Paleontological Statistics Software Package for Education and Data Analysis,” *Palaeontologia Electronica*, Vol. 4, 2001. http://palaeo-electronica.org/2001_1/past/issue1_01.htm
- [22] A. Ramette, “Multivariate Analyses in Microbial Ecology,” *FEMS Microbiology Ecology*, Vol. 62, No. 2, 2007, pp. 142-160. [doi:10.1111/j.1574-6941.2007.00375.x](https://doi.org/10.1111/j.1574-6941.2007.00375.x)
- [23] T. Brinkhoff, H.-A. Giebel and M. Simon, “Diversity, Ecology, and Genomics of the Roseobacter Clade: A Short overview,” *Archives of Microbiology*, Vol. 189, No. 6, 2008, pp. 531-539. [doi:10.1007/s00203-008-0353-y](https://doi.org/10.1007/s00203-008-0353-y)
- [24] H. Dang, T. Li, M. Chen and G. Huang, “Cross-Ocean Distribution of *Rhodobacteriales* Bacteria as Primary Surface Colonizers in Temperate Coastal Marine Waters,” *Applied and Environmental Microbiology*, Vol. 74, No. 1, 2008, 52-60. [doi:10.1128/AEM.01400-07](https://doi.org/10.1128/AEM.01400-07)
- [25] S. Spring, R. Schulze, J. Overmann and K.-H. Schleifer, “Identification and Characterization of Ecologically Significant Prokaryotes in the Sediment of Freshwater Lakes: Molecular and Cultivation Studies,” *FEMS Microbiology Reviews*, Vol. 24, No. 5, 2000, pp. 573-590. [doi:10.1111/j.1574-6976.2000.tb00559.x](https://doi.org/10.1111/j.1574-6976.2000.tb00559.x)
- [26] T. C. Bouvier and P. A. Del Giorgio, “Compositional Changes in Free-Living Bacterial Communities along a Salinity Gradient in Two Temperate Estuaries,” *Limnology and Oceanography*, Vol. 47, No. 2, 2002, pp. 453-470. [doi:10.4319/lo.2002.47.2.0453](https://doi.org/10.4319/lo.2002.47.2.0453)
- [27] G. A. F. Lemes, R. Kersanach, L. da S. Pinto, O. A. Del-lagostin, J. S. Yunes and A. Matthiensen, “Biodegradation of Microcystins by Aquatic *Burkholderia* sp. from a South Brazilian Coastal Lagoon,” *Ecotoxicology and Environmental Safety*, Vol. 69, No. 3, 2008, pp. 358-365. [doi:10.1016/j.ecoenv.2007.03.013](https://doi.org/10.1016/j.ecoenv.2007.03.013)
- [28] L. Sun, F. Qiu, X. Zhang, X. D. Xiuzhu, Dong and W. Song, “Endophytic Bacterial Diversity in Rice (*Oryza sativa* L.) Roots Estimated by 16S rDNA Sequence Analysis,” *Microbial Ecology*, Vol. 55, No. 3, 2008, pp. 415-424. [doi:10.1007/s00248-007-9287-1](https://doi.org/10.1007/s00248-007-9287-1)

- [29] Q. L. Wu, G. Zwart, M. Schauer, P. Miranda, M. P. Kamst-van Agterveld and M. W. Hahn, "Bacterioplankton Community Composition along a Salinity Gradient of Sixteen High-Mountain Lakes Located on the Tibetan Plateau, China," *Applied Environmental Microbiology*, Vol. 72, No. 8, 2006, pp. 5478-5485. [doi:10.1128/AEM.00767-06](https://doi.org/10.1128/AEM.00767-06)
- [30] B. C. Crump, C. S. Hopkinson, M. L. Sogin and J. E. Hobbie, "Microbial Biogeography along an Estuarine Salinity Gradient: Combined Influences of Bacterial Growth and Residence Time," *Applied and Environmental Microbiology*, Vol. 70, No. 3, 2004, pp. 1494-1505. [doi:10.1128/AEM.70.3.1494-1505.2004](https://doi.org/10.1128/AEM.70.3.1494-1505.2004)
- [31] C. A. Lozupone and R. Knight, "Global Patterns in Bacterial Diversity," *Proceedings of the National Academy of Sciences USA*, Vol. 104, No. 27, 2007, pp. 11436-11440. [doi:10.1073/pnas.0611525104](https://doi.org/10.1073/pnas.0611525104)
- [32] C. R. Jackson and S. C. Vallaire, "Effects of Salinity and Nutrients on Microbial Assemblages in Louisiana Wetland Sediment," *Wetlands*, Vol. 29, No. 1, 2009, pp. 277-287. [doi:10.1672/08-86.1](https://doi.org/10.1672/08-86.1)
- [33] J.-C. Auguet, A. Barberán and E. O. Casamayor, "Global Ecological Patterns in Uncultured Archaea," *The ISME Journal*, Vol. 4, No. 2, 2010, pp. 182-190. [doi:10.1038/ismej.2009.109](https://doi.org/10.1038/ismej.2009.109)
- [34] A. Barberán and E. Casamayor, "Global Phylogenetic Community Structure and β -Diversity Patterns in Surface Bacterioplankton Metacommunities," *Aquatic Microbial Ecology*, Vol. 59, No. 1, 2010, pp. 1-10. [doi:10.3354/ame01389](https://doi.org/10.3354/ame01389)
- [35] C. M. Jones and S. Hallin, "Ecological and Evolutionary Factors Underlying Global and Local Assembly of Denitrifier Communities," *The ISME Journal*, Vol. 4, No. 5, 2010, pp. 633-641. [doi:10.1038/ismej.2009.152](https://doi.org/10.1038/ismej.2009.152)
- [36] L. Tam, P. G. Kevan and J. T. Trevors, "Viable Bacterial Biomass and Functional Diversity in Fresh and Marine Waters in the Canadian Arctic," *Polar Biology*, Vol. 26, No. 5, 2003, pp. 287-294.
- [37] I. Boujelben, M. Gomariz, M. Martinez-Garcia, F. Santos, A. Pena, C. Lopez, J. Antonand and S. Maalej, "Spatial and Seasonal Prokaryotic Community Dynamics in Ponds of Increasing Salinity of Sfax Solar Saltern Tunisia," *Antonie van Leeuwenhoek*, Vol. 101, No. 4, 2012, pp. 845-857. [doi:10.1007/s10482-012-9701-7](https://doi.org/10.1007/s10482-012-9701-7)
- [38] M. Estrada, P. Henriksen, J. M. Gasol, E. O. Casamayor and C. Pedros-Alio, "Diversity of Planktonic Photoautotrophic Microorganisms along a Salinity Gradient as Depicted by Microscopy, Flow Cytometry, Pigment Analysis and DNA-Based Methods," *FEMS Microbiology Ecology*, Vol. 49, No. 2, 2004, pp. 281-293. [doi:10.1016/j.femsec.2004.04.002](https://doi.org/10.1016/j.femsec.2004.04.002)
- [39] M. Schapira, M. J. Buscot, S. C. Leterme, T. Pollet, C. Chaperon and L. Seuront, "Distribution of Heterotrophic Bacteria and Virus-Like Particles along a Salinity Gradient in a Hypersaline Coastal Lagoon," *Aquatic Microbial Ecology*, Vol. 54, No. 2, 2009, pp. 171-183. [doi:10.3354/ame01262](https://doi.org/10.3354/ame01262)
- [40] C. Pedrós-Alió, J. I. Calderón-Paz, M. H. MacLean, G. Medina, C. Marrasé, J. M. Gasol and N. Guixa-Boixereu, "The Microbial Food Web along Salinity Gradients," *FEMS Microbiology Ecology*, Vol. 32, No. 2, 2000, pp. 143-155.
- [41] S. Benlloch, A. Lopez-Lopez, E. O. Casamayor, L. Ovreas and V. Goddard, "Prokaryotic Genetic Diversity throughout the Salinity Gradient of a Coastal Solar Saltern," *Environmental Microbiology*, Vol. 4, No. 6, 2002, pp. 349-360. [doi:10.1046/j.1462-2920.2002.00306.x](https://doi.org/10.1046/j.1462-2920.2002.00306.x)
- [42] J. P. Grime, "Competitive Exclusion in Herbaceous Vegetation," *Nature*, Vol. 242, 1973, pp. 344-347. [doi:10.1038/242344a0](https://doi.org/10.1038/242344a0)
- [43] H. S. Horn, "Markovian Properties of Forest Succession," In: M. L. Cody and J. M. Diamond, Eds., *Ecology and Evolution of Communities*, Belknap Press, Cambridge, 1975, pp. 196-211.
- [44] J. H. Connell, "Diversity in Tropical Rain Forests and Coral Reefs," *Science*, Vol. 199, No. 4335, 1978, pp. 1302-1310. [doi:10.1126/science.199.4335.1302](https://doi.org/10.1126/science.199.4335.1302)
- [45] W. P. Sousa, "Disturbance in Marine Intertidal Boulder Fields: The Nonequilibrium Maintenance of Species Diversity," *Ecology*, Vol. 60, No. 6, 1979, pp. 1225-1239. [doi:10.2307/1936969](https://doi.org/10.2307/1936969)
- [46] M. Troussellier, H. Schäfer, N. Batailler, L. Bernard, C. Courties, P. Lebaron, G. Muyzer, P. Servais and J. Vives-Rego, "Bacterial Activity and Genetic Richness along an Estuarine Gradient (Rhône River plume, France)," *Aquatic Microbial Ecology*, Vol. 28, No. 1, 2002, pp. 13-24. [doi:10.3354/ame028013](https://doi.org/10.3354/ame028013)
- [47] K. Muylaert, K. Sabbe and W. Vyverman, "Changes in Phytoplankton Diversity and Community Composition along the Salinity Gradient of the Schelde estuary (Belgium/The Netherlands)," *Estuarine, Coastal and Shelf Science*, Vol. 82, No. 2, 2009, pp. 335-340. [doi:10.1016/j.ecss.2009.01.024](https://doi.org/10.1016/j.ecss.2009.01.024)
- [48] I. V. Telesh, H. Schubert and S. O. Skarlato, "Revisiting Remane's Concept: Evidence for High Plankton Diversity and a Protistan Species Maximum in the Horohalnicum of the Baltic Sea," *Marine Ecology Progress Series*, Vol. 421, 2011, pp. 1-11. [doi:10.3354/meps08928](https://doi.org/10.3354/meps08928)