

Thermal sensitivity of the crab *Neosarmatium africanum* in tropical and temperate mangroves on the east coast of Africa

Marco Fusi  · Simone Babbini · Folco Giomi · Sara Fratini · Farid Dahdouh-Guebas · Daniele Daffonchio · Christopher David McQuaid · Francesca Porri · Stefano Cannicci

Received: 29 October 2016 / Revised: 20 February 2017 / Accepted: 27 February 2017 / Published online: 9 March 2017
© Springer International Publishing Switzerland 2017

Abstract Mangrove forests are amongst the tropical marine ecosystems most severely affected by rapid environmental change, and the activities of key associated macrobenthic species contribute to their ecological resilience. Along the east coast of Africa, the amphibious sesamid crab *Neosarmatium africanum* (= *meinerti*) plays a pivotal role in mangrove

ecosystem functioning through carbon cycling and sediment bioturbation. In the face of rapid climate change, identifying the sensitivity and vulnerability to global warming of this species is of increasing importance. Based on a latitudinal comparison, we measured the thermal sensitivity of a tropical and a temperate population of *N. africanum*, testing specimens at the centre and southern limit of its distribution, respectively. We measured metabolic oxygen consumption and haemolymph dissolved oxygen content during air and water breathing within a

Guest editors: K. W. Krauss, I. C. Feller, D. A. Friess, R. R. Lewis III / Causes and Consequences of Mangrove Ecosystem Responses to an Ever-Changing Climate

M. Fusi (✉) · D. Daffonchio
Biological and Environmental Sciences & Engineering Division (BESE), King Abdullah University of Science and Technology (KAUST), Thuwal 23955-6900, Saudi Arabia
e-mail: marco.fusi@kaust.edu.sa

S. Babbini · S. Fratini · S. Cannicci
Department of Biology, University of Florence, Via Madonna del Piano 6, 50019 Sesto Fiorentino, Italy

F. Giomi
Department of Agronomy Food Natural resources Animals and Environment (DAFNAE), University of Padova, Viale dell'università, 16, 35020 Legnaro, PD, Italy

F. Dahdouh-Guebas
Laboratory of Systems Ecology and Resource Management, Department of Organism Biology, Faculty of Sciences, Université Libre de Bruxelles – ULB, Avenue F.D. Roosevelt 50, CPI 264/1, 1050 Brussels, Belgium

F. Dahdouh-Guebas
Ecology & Biodiversity, Laboratorium voor Algemene Plantkunde en Natuurbeheer (APNA), Department of Biology, Faculty of Sciences and Bio-engineering Sciences, Vrije Universiteit Brussel – VUB, Pleinlaan 2, 1050 Brussels, Belgium

C. D. McQuaid · F. Porri
Coastal Research Group, Department of Zoology and Entomology, Rhodes University, Grahamstown, South Africa

F. Porri
South African Institute for Aquatic Biodiversity (SAIAB), Somerset Street, Grahamstown, 6139, South Africa

S. Cannicci
The Swire Institute of Marine Science and The School of Biological Sciences, The University of Hong Kong, Pokfulam Road, Pok Fu Lam, Hong Kong

temperature range that matched the natural environmental conditions. The results indicate different thermal sensitivities in the physiological responses of *N. africanum* from tropical and temperate populations, especially during air breathing. The differences observed in the thermal physiology between the two populations suggest that the effect of global warming on this important mangrove species may be different under different climate regimes.

Keywords Sesarmidae · Decapods · Tropical and temperate wetlands · Oxygen consumption · Haemolymph · Physiology · Populations

Introduction

Recent integrative frameworks propose that the vulnerability of species to environmental changes depends on their capacity to individually adapt their physiology and behaviour in response to the changes they effectively experience (Williams et al., 2008; Huey et al., 2012; Rezende et al., 2014). These frameworks thus suggest that the vulnerability of a species to climate change should be assessed through a mechanistic approach, based on the integration of data from its biological traits (such as behaviour, thermal physiology and metabolism) with environmental data (Gaston et al., 2009; Kearney & Porter, 2009; Sih et al., 2010; Kearney et al., 2012). Amongst physiological traits, respiration and respiration control provide one of the most accurate proxies of a species' thermal sensitivity, defined as the physiological response (such as metabolic oxygen consumption and haemolymph oxygen content) to changes in its thermal environment (Sinclair et al., 2016; Verberk et al., 2016). Furthermore, it is becoming evident that the assessment of thermal sensitivity has to be determined throughout a species entire distributional range, since conspecific populations subject to different environmental conditions can respond in different ways (Eliason et al., 2011; Sunday et al., 2011; Baldanzi et al., 2015; Fusi et al., 2015).

Mangrove forests are amongst the most vulnerable and endangered ecosystems in the world (Duke et al., 2007; Hoegh-Guldberg & Bruno, 2010) and are heavily threatened by sea-level rise as a consequence of global warming (Gilman et al., 2008; Lovelock et al., 2015). Their exposure to factors related to

climate change, such as rising temperature, is, however, still debated amongst ecologists (Gilman et al., 2008), and few data are available on the relevant ecological traits of key benthic species that play a critical role in mangrove ecosystem functioning (Lee, 2008). In east African mangrove forests, the large burrowing sesarmid crab *Neosarmatium africanum* (namely = *meinerti*, Ragionieri et al., 2012), can occur at densities of over 20 individuals per square metre (Andreetta et al., 2014). *N. africanum* is a semi-terrestrial species and is the African representative of a complex of four sister species colonizing the Indian Ocean and East Australia regions (Ragionieri et al., 2010, 2012). It occupies the landward fringe of mangrove forests (Macnae, 1968; Hartnoll, 1975), which is inundated only during spring tides and is frequently dominated by *Avicennia marina* trees (Forssk.) Vierh. (Tomlinson, 1986). *N. africanum* provides crucial ecological functions for the entire ecosystem such as burrowing (Micheli et al., 1991; Berti et al., 2008) and a contribution to carbon burial and storage (Andreetta et al., 2014), amongst the others. By burrowing, *N. africanum* also contributes to modification of sediment topography and the distribution of sediment grain size (Warren & Underwood, 1986), reduces pore water salinity (Ridd, 1996; Stieglitz et al., 2000), creates microhabitats for other fauna (Bright & Hogue, 1972; Dittmann, 1996; Gillikin et al., 2001), contributes to secondary production (Lee, 1997) and increases nutrient levels while decreasing sulphide concentrations in the sediment (Smith et al., 1991; Kristensen, 2008).

Despite such an array of multiple and critical functions, information on the sensitivity of *N. africanum* to environmental changes is lacking. The landward edge of the *A. marina* zone is a particularly harsh environment for intertidal species as it is subject to acute fluctuations in both salinity and temperature (Macnae & Kalk, 1962). Gillikin et al. (2004) showed that these crabs are highly effective hyper/hypo-osmoregulators, able to survive a range of 16–65 ppt of salinity, but no data are available concerning this species' thermal responses. Given the accumulating evidence that allopatric conspecific populations may exhibit important differences in their metabolic responses to stress, we asked whether *N. africanum* individuals belonging to tropical and temperate populations may have a different thermal sensitivity. We addressed this question by examining physiological

responses of *N. africanum* to temperature in the laboratory and coupling this result with the temperatures they experience in the field. Since a population comparison is fundamental to a reliable assessment of species sensitivity (Eliason et al., 2011; Fusi et al., 2015), we carried out these experiments on specimens at the centre (Kenya) and the southern limit (South Africa) of *N. africanum* distribution.

Materials and methods

Study areas (Fig. 1)

The study was performed during the hottest season at each study site, November/December in Kenya as the tropical site, January/February in South Africa as the temperate site.

Tropical site: Kenya—Gazi Bay (4°22'S, 39°30'E)

Gazi bay is a semi-enclosed shallow coastal system located about 40 km south of Mombasa, Kenya. The climate is typically monsoonal, with moist southeast monsoons from March to September and dry northeast monsoons from October to February; rain occurs from March to May and, to a lesser extent, during October

and November (Kitheka et al., 1996) Average annual maximum temperature value is around 27–30°C throughout the year.

Temperate site: South Africa—Mngazana estuary (31°42'S, 29°25'E)

The Mngazana River is situated about 250 km southwest of Durban, on the southeast coast of South Africa. The estuary measures 5.3 km in length and is permanently open to the sea. There are two creeks, which support the main populations of mangroves. Rainfall occurs throughout the year but especially during summer (November–January) (Rajkaran & Adams, 2012) Temperatures vary from an average maximum value of 30–33°C in summer to 10–14°C in winter. The mangrove forest at the Mngazana estuary is one of the southerly in the world (Quisthoudt et al., 2013).

Thermal and tidal series

To determine the temperature range experienced by natural populations of *N. africanum*, temperature was recorded in the field for approximately two months during the summer period (49 days in Kenya, 43 days in South Africa) in 2011/2012. Forty temperature

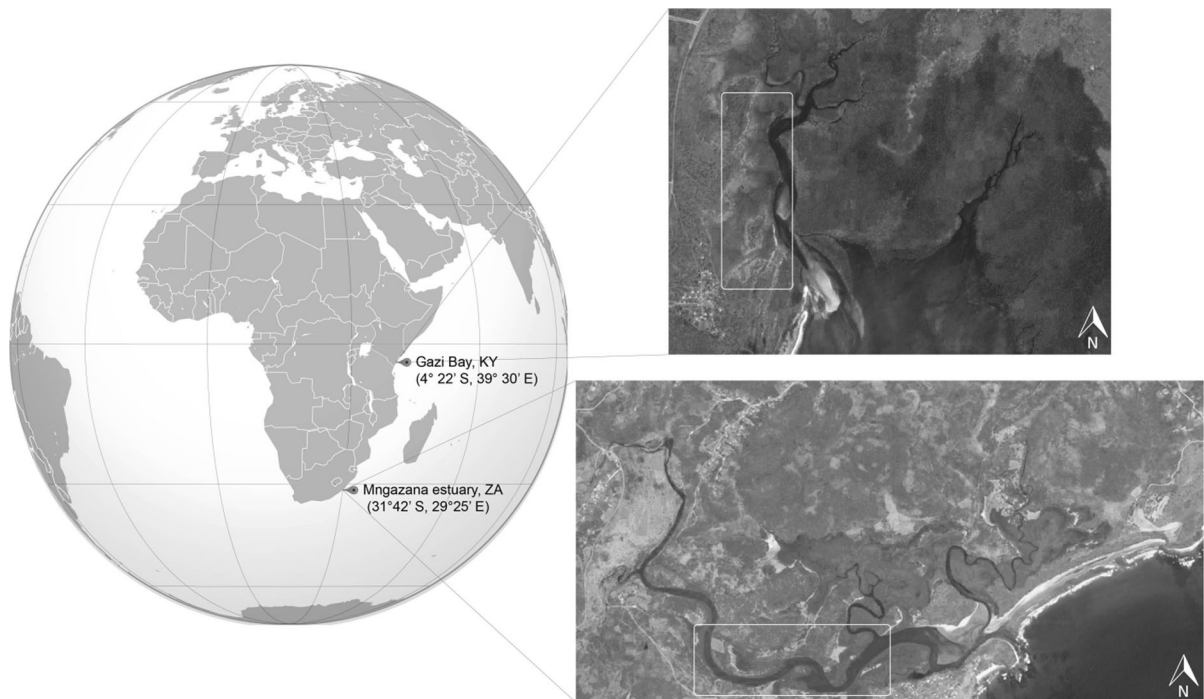


Fig. 1 Study sites along the east coast of Africa. The tropical one at Gazi, Kenya and temperate one at Mngazana, South Africa

loggers (Maxim integrated product, ColdChain Thermodynamics) were placed in areas inhabited by the focal species, avoiding direct exposure to the sun; 20 were positioned about 3 cm above the sediment surface and 20 approximately 20 cm beneath the sediment surface close to the burrows of the animals in order to record the temperature to which the animals were directly exposed (Edney, 1961). Loggers were waterproofed using silicon cases that do not affect the accuracy of measurements (Roznik & Alford, 2012). Four additional loggers were used to measure air temperature and humidity. These were attached to branches under the canopy, about 4 m from the ground to avoid tidal submersion, and were protected from rain with plastic covers. All loggers were set up to measure temperature ($\pm 0.1^\circ\text{C}$) at 5 min intervals for 15 days, after which data were downloaded and the loggers reset and re-deployed for a total of 4 times in Kenya and 3 in South Africa. Data were downloaded with Cold Chain Thermodynamics software (version 4.9—Fairbridge Technologies) and average temperature was calculated for every hour of all recorded days.

Tidal series data were retrieved by Wtide software version 3.1.7 (www.wtide.com) taking as reference points Kilindini and East London in Kenya and South Africa, respectively, corrected with the delay recorded for our study sites. The tides were therefore correlated hourly with the temperature.

Crab sampling for laboratory experiments

Sixteen adult males of *N. africanum* of similar size (approximately 40 mm carapace width) were collected at each site. For acclimation, they were held for two days in aquaria prior to the start of the experiments. They were kept in filtered seawater (35‰ salinity) at $27 \pm 0.5^\circ\text{C}$, under a 12/12 h light/dark cycle. In Kenya, the animals were kept at the laboratory of KMFRI (Kenya Marine and Fisheries Research Institute) in Gazi, while in South Africa at the Coastal Research Group Laboratory, Rhodes University, Grahamstown.

Oxygen consumption

Oxygen consumption (MO_2), approximating the routine metabolic rate, was measured in air and water for 8 adult males for each site using an

intermittent flow respirometer equipped with eight parallel darkened Perspex chambers placed in a temperature-controlled water bath. An oxygen sensor (Sensor Type PSt3 PreSens, Regensburg, Germany), glued to the inside wall of the chamber and connected to a single channel oxygen transmitter Fibox 3 (PreSens, Regensburg, Germany) through an optical sub-miniature fibre, was used to measure the partial pressure of oxygen in air and water. Data were recorded using the FibSoft v.1.0 software (Loligo Systems ApS). Prior to measurements, sensors were calibrated in air-equilibrated seawater (100% oxygen saturation) and in sodium thiocyanate-saturated seawater (0% oxygen). During trials, oxygen concentration was not allowed to fall below 60% in order to avoid exposing the animals to severe hypoxic conditions (Schurmann & Steffensen, 1992). The limited movements of individuals inside the experimental chambers were adequate to ensure stirring of the water and MO_2 was determined by measuring the linear decline in oxygen saturation. An empty chamber was used during each trial as a control, to account for background oxygen depletion, which was less than 2% of the animals' consumption in water and negligible in air. Prior to ramping of temperature, individuals were placed in the chambers and allowed to recover from handling stress overnight at $27 \pm 0.5^\circ\text{C}$. From an initial measurement performed at 27°C , MO_2 was determined at every two degrees of temperature across the increasing range $27\text{--}37^\circ\text{C}$, raising temperature at the rate of 1°C h^{-1} (Terblanche et al., 2011). Differences in the variability of MO_2 were not caused by differences in behaviour between the two populations (personal observation). Following each experiment, every animal was individually weighed and its volume calculated by immersing it in a graduated cylinder and measuring the water displacement. All experiments lasted less than 24 h to avoid interference with the metabolic rate by other factors such as starvation; during air respiration humidity was kept at 90% to avoid desiccation (Terblanche et al., 2011). Since the Q_{10} coefficient is an integrated measure of biochemical reactions with physical processes in relation to increases in temperature, it provides a good proxy for thermal performance. $Q_{10[27\text{--}37^\circ\text{C}]}$ were therefore calculated for each treatment following Baldanzi et al. (2015).

Haemolymph dissolved oxygen content

Dissolved oxygen content in arterial and venous (sensu Greenaway & Farrelly, 1984) haemolymph was measured with fiber-optic oxygen microsensors (PreSens GmbH) connected to an oxygen metre (Microx TX, PreSens GmbH) with integrated signal processing software. Sensors were calibrated before each experiment using a two-point calibration in oxygen-free (addition of sodium dithionite) and air-saturated seawater. Animals were acclimated overnight at 27°C and the oxygen dissolved in haemolymph was estimated between 27 and 38°C (accuracy $\pm 1^\circ\text{C}$), using the protocol described for the MO_2 experiment.

Arterial haemolymph was withdrawn from the pericardial sinus through a 0.2 mm hole drilled through the carapace (Frederich & Pörtner, 2000). Venous blood was withdrawn from the sinus below the arthrodistal membrane, at the base of the fourth or fifth pereopod (Greenaway & Farrelly, 1984; Giomi & Pörtner, 2013). In both cases, a small amount of haemolymph (less than 20 μl) was collected through capillary action using a manually sharpened Pasteur pipette with a pre-inserted oxygen sensor close to the tip. Because of instrumental failure, the measurement of haemolymph oxygen content was only possible in Kenya.

Statistical analysis

For the environmental data, a Permutational Analysis of Variance was performed with the null hypothesis of no differences for environmental temperatures and humidity across Regions (Kenya KY, South Africa ZA), and Sampled Zones (Above ground, Below ground and Air), defined as fixed and orthogonal. Further, a PERMDISP was performed to test the similarity of the variances amongst temperatures and humidity; whenever the variances proved heterogeneous, log-transformation was applied prior to proceeding with PERMANOVA analysis. These analyses were performed using PERMANOVA + routines for PRIMER 6 (Anderson et al., 2008).

To test for statistical differences in MO_2 between populations and medium of respiration, an ANCOVA was performed using a linear mixed model (lme4). MO_2 was set as the continuous response variable, temperature as a continuous explanatory variable and

Region (Kenya, South Africa) and Medium (water, air) were set as fixed categorical explanatory variables. Prior to statistical tests, MO_2 data were log-transformed and the normality for each group of data was tested using the Shapiro–Wilk test. Levene’s test indicated homogeneity of variances in the data (d.f. = 3, 69; $F = 2.6$; $P = 0.5883$). Since measurements across the temperature ramp were made on the same individuals, they were not independent. Consequently, we treated Individual ID as a random factor in the mixed model to account for multiple observations (Bates, 2010).

The best fitted model obtained as described above was then used to calculate the potential daily MO_2 experienced by the two populations at neap and spring tide, feeding the model with the hourly average temperatures above and below ground recorded in the field.

The same analysis was performed for haemolymph dissolved oxygen content, the only difference being that the explanatory variable Region was excluded since PO_2 measurements were performed only in Kenya and we included the explanatory categorical variable Haemolymph (levels: Arterial, Venous) (Levene’s Test; d.f. = 3, 38; $F = 3.34$; $P = 0.649$). The response variable Haemolymph oxygen content was previously square root-transformed for normality. These statistical analyses were carried out in R (R Development Core Team, 2014).

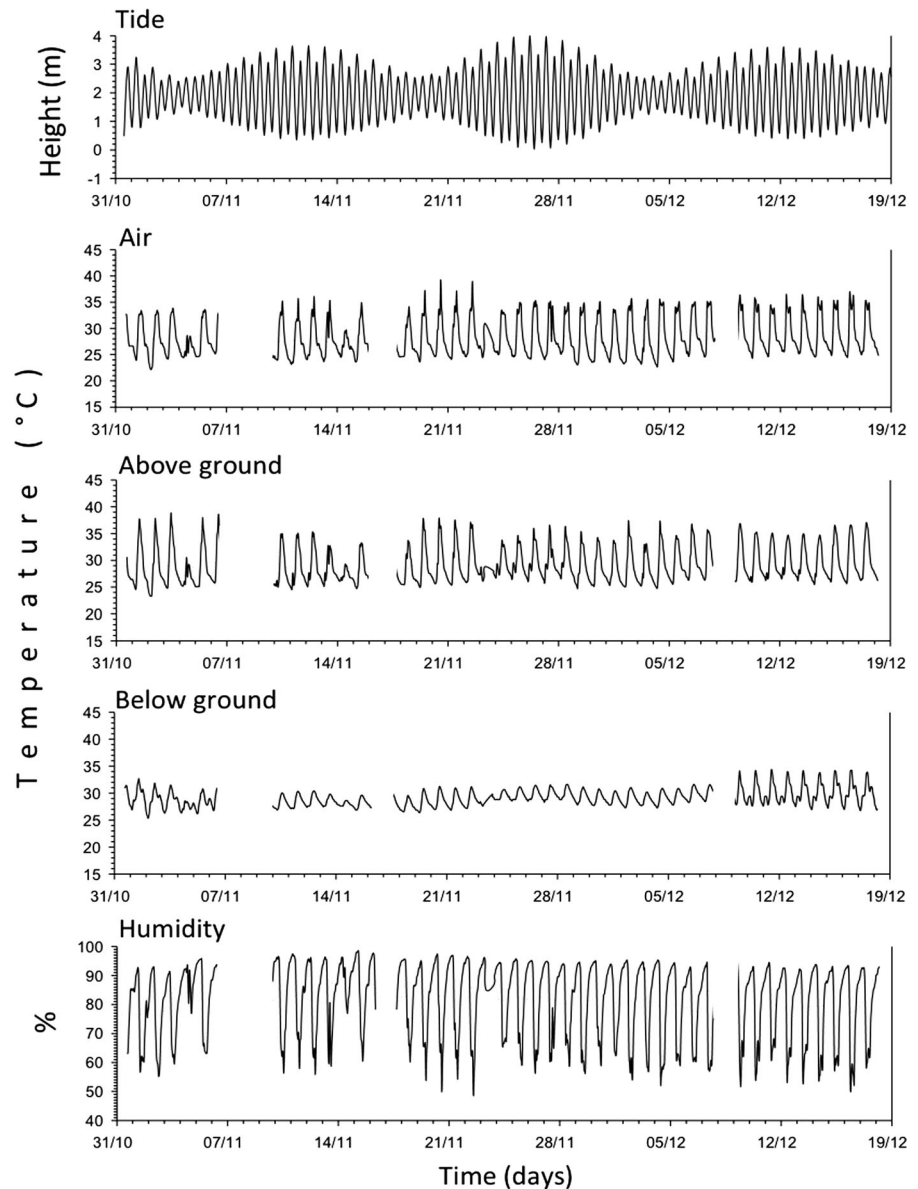
Results

Tidal and thermal series

The tidal range during the observation periods differed between the two study regions (Figs. 2, 3). In Kenya, maximum tidal range was 4 m during spring tides and 2.5 m during neap tides. In South Africa, the range was 2 m during spring tides and 0.5 m during neap tides. Either in Kenya or South Africa, during almost all the duration of neap tides, sea level did not reach the area occupied by *N. africanum* (Fig. 6).

Thermal regimes also differed significantly between regions: Kenya experienced less variable (PERMDISP, $t = 5.67$, $P < 0.01$) and hotter (PERMANOVA p-hpt, $t = 20.39$, $P < 0.001$) temperatures than South Africa. Average temperatures in Kenya ranged between 23 and 39°C above the sediment surface, 25–34°C below the surface and air

Fig. 2 Environmental temperatures and humidity of the area colonized by *Neosarmatium africanum* in Kenya during the period from 31 October to 19 December 2011. The *dashed line* is the daily average of the variable described in each graph, while the *solid line* is the hourly average



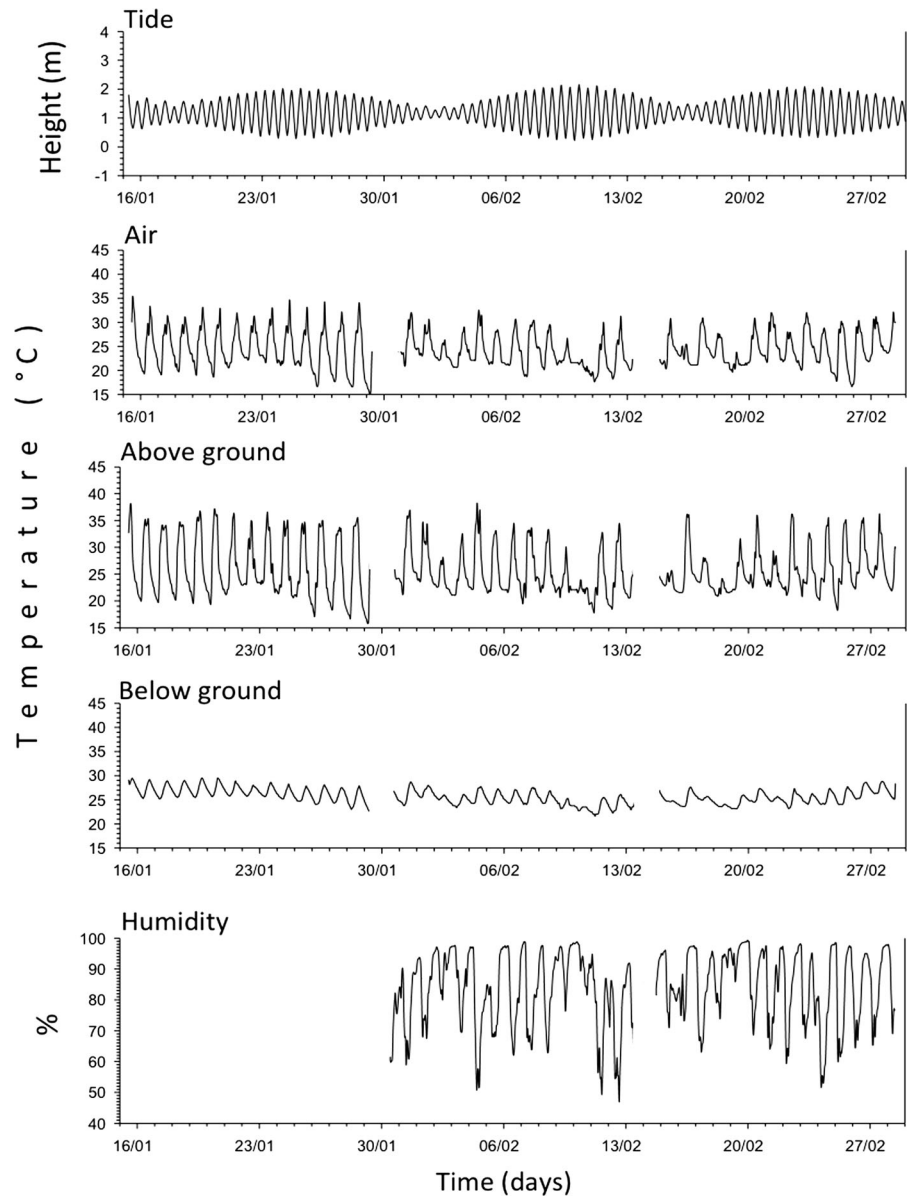
temperatures were 22–39°C. These values were significantly different from those for South Africa: 16–37°C above ground, 23–30°C below ground and 15–36°C for air (PERMANOVA p-hpt, $t = 7.74$, $P < 0.001$ in each case).

Humidity measurements were not significantly different between regions (PERMDISP, $t = 1.79$, $P = 0.16$; PERMANOVA p-hpt, $t = 1.56$, $P = 0.15$) with values in both localities ranging between 50% and almost 100%.

Mo₂

The interaction amongst temperature, medium and region was highly significant (Fig. 4; $F_{4,170} = 57.266$, $P < 0.0001$; ANCOVA), indicating that MO₂ differed significantly between the two respiratory media (i.e. air and water) for both populations. In both cases, metabolic rate was higher in air than in water, but the difference was markedly greater for Kenya than South Africa. The best significant model that described the

Fig. 3 Environmental temperature and humidity of the area colonized by *Neosarmatium africanum* in South Africa during the period from 16 January to 5 March 2012. The *dashed line* is the daily average of the variable described in each graph, while the *solid line* is the hourly average



MO_2 of *N. africanum* was represented by an exponential relationship between temperature and oxygen consumption. For the Kenyan population, the best fitted model during air respiration was $y = 0.018e^{0.06294\kappa}$ with a Q_{10} of 1.8, while for respiration in water it was $0.00513e^{0.06916\kappa}$ with a Q_{10} of 1.9. For the South African population, the best models were $y = 0.0102e^{0.04358\kappa}$ with a Q_{10} of 1.2 for air and $y = 0.000856e^{0.11070\kappa}$ with a Q_{10} of 1.9 for water.

Haemolymph dissolved oxygen content

The oxygen content of venous and arterial haemolymph differed significantly between air and water along the temperature ramp (Fig. 5; significant interaction amongst temperature, medium, haemolymph ANCOVA, $F_{4, 139} = 99.648$; $P < 0.001$). In both media, *N. africanum* showed a low ability to saturate arterial haemolymph. With increasing temperatures,

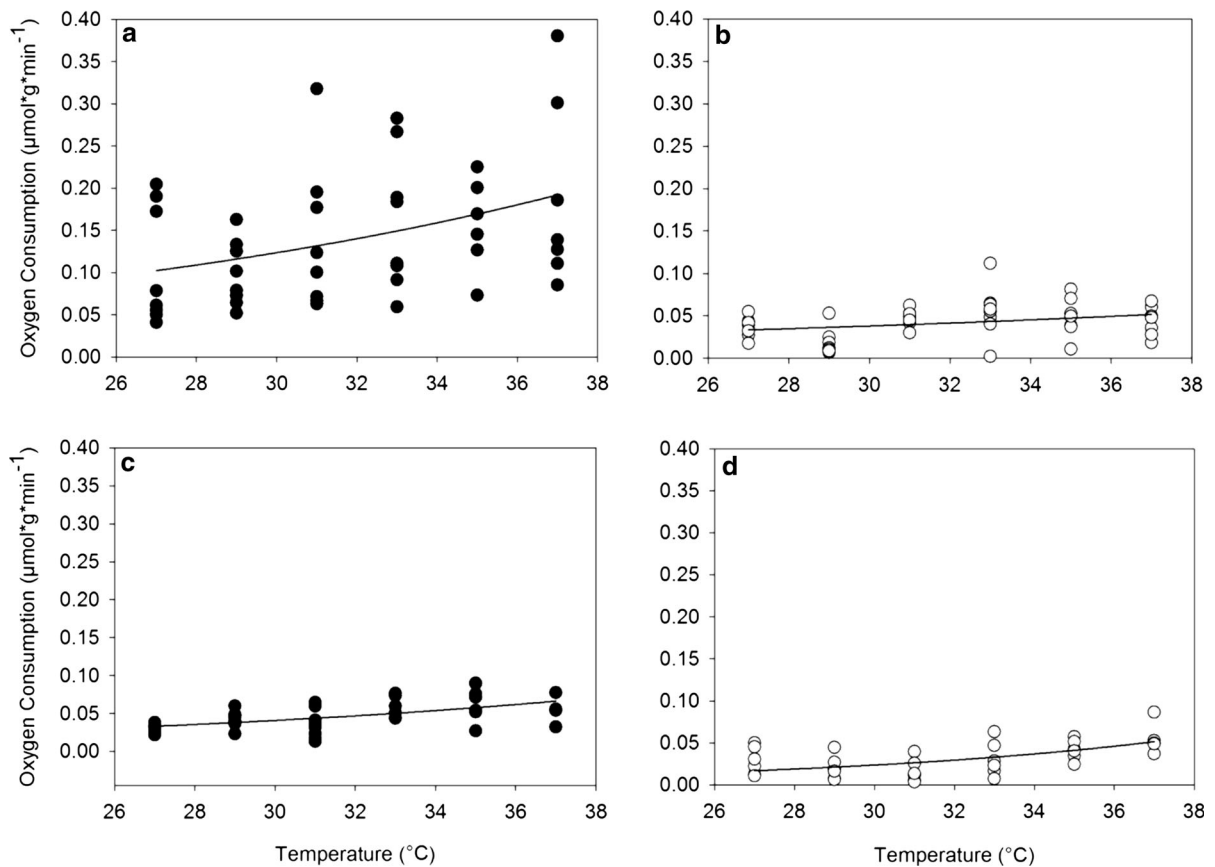


Fig. 4 MO_2 of *Neosarmatium africanum* from Kenya in air **a** and water **c** and from South Africa in air **b** and water **d**. The significant best fitted models (see results section for the equations) are represented with continuous *black lines* for each population and medium

oxygen saturation was significantly more affected in water than in air, dropping to almost 0 kPa at 33°C. During air respiration, haemolymph was saturated until 34°C, dropping to 0 kPa around 37°C. Similar patterns were observed for venous haemolymph, though with lower saturation levels than for arterial haemolymph.

Discussion

The thermal environment experienced by the two populations of *Neosarmatium africanum* differed significantly between the two sites, with wider above ground temperature fluctuations in South Africa than in Kenya. This difference was less marked for below ground temperature, presumably because soil buffers temperature variation. Although the natural thermal environment was monitored for a relatively short time, a consistent difference in temperature between latitudes reflects different thermal niches across the

distributional range of *N. africanum*. Above ground temperature variability suggest that burrows can play a fundamental role as stable thermal refugia from the heat (Edney, 1961) that crabs of both populations experience when active above ground (Sunday et al., 2014). Regardless of local differences in tidal regime, both populations experience prolonged periods of emersion during neap tides, during which they are exposed to fluctuations of air temperature for extended periods. Conversely, at spring tide, when the inhabited zones are flooded, animals experience more stable temperature in both regions. Despite a higher variable regime of pronounced temperature fluctuation, the South African population of *N. africanum* revealed a limited capability for sustaining high metabolic costs under increasing temperatures. Similarly, when submerged, the crabs from the Kenyan population showed no compensatory capacity for the temperature-induced increase of metabolic costs. On the contrary, while breathing in air, the Kenyan crabs showed the

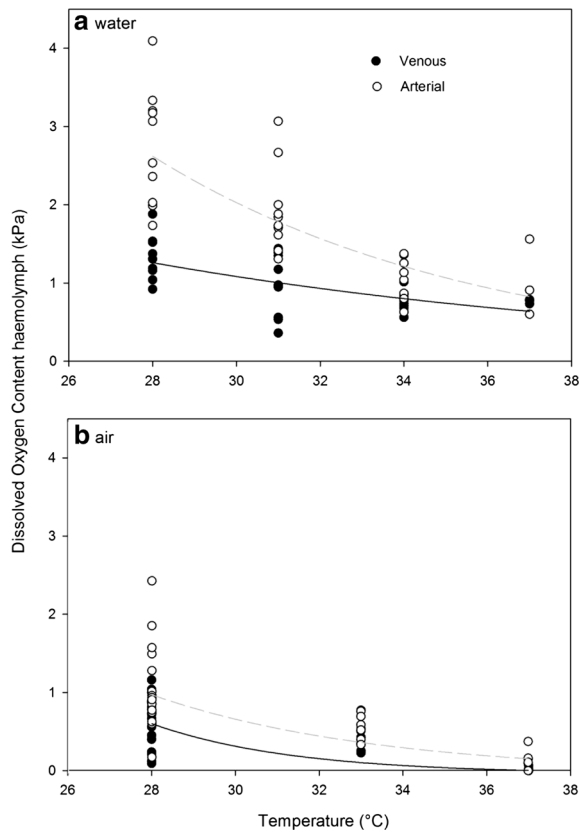


Fig. 5 Haemolymph dissolved oxygen content of Kenyan *Neosarmatium africanum* during water (a) and air (b) respiration; open circles arterial haemolymph, black circles venous haemolymph. Significant regressions are plotted: arterial ($y = 96.016e^{-0.129x}$ for water and $176.49e^{-0.0185x}$ for air respiration) shown in dotted-grey line, while venous ($y = 10.516e^{-0.076x}$ for water and $6058.2e^{-0.0332x}$ for air respiration) shown in solid-black line

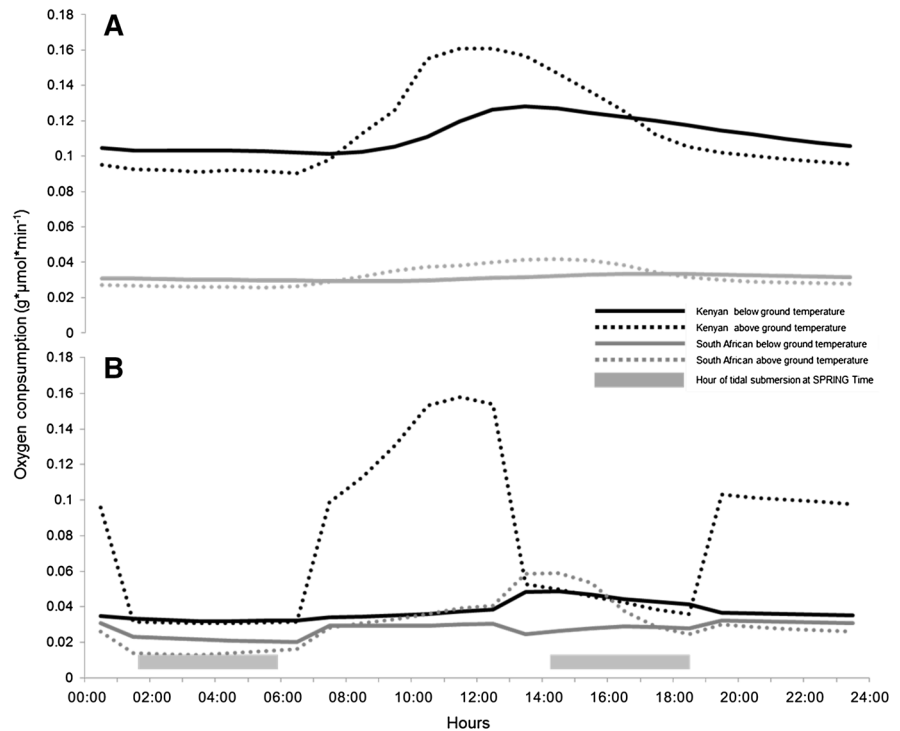
potential to adjust their metabolism during temperature rise. It should be noted that natural temperature fluctuations are more rapid and abrupt than those experimentally simulated in our protocol, and that these even more severe thermal regimes may further exacerbate the different metabolic responses of the two populations. The ability for such metabolic adjustment can be explained by the fact that the thermal responses are deeply influenced by the biogeographic effects (Pörtner, 2001; Gaitán-Espitia et al., 2014; Baldanzi et al., 2015) that involve different thermal histories for conspecific populations (Giomi et al., 2016). The tropical Kenyan population is subject to more constant, if higher, temperatures than the South African population, which experiences a wider temperature range and notably low

temperatures during winter (Quisthoudt et al., 2013). Q_{10} values were similar for tropical specimens in air and water and South African specimens in water ($Q_{10[27-37^{\circ}\text{C}]}$ = 1.8, 1.9 and 1.8 respectively), but markedly lower for South African specimens in air ($Q_{10[27-37^{\circ}\text{C}]}$ = 1.2). While a Q_{10} around 2 is relatively common in marine ectotherms (Clarke & Fraser, 2004) and reflects a fairly normal response to increasing temperature, a Q_{10} of 1.2 indicates reduced thermal sensitivity. We propose two opposing explanations for these results. The first is that, during air respiration, the animals from the South African population are able to moderate its metabolic response to warming as observed in the tropical high shore snail, *Echinolittorina malaccana* (Philippi, 1847) (Marshall & McQuaid, 2011). Alternatively, we can interpret these data as a sign that the South Africa population is unable to endure such acute thermal stress (Verberk et al., 2015), exhibiting an inefficient metabolic response to increased temperature. This second interpretation would indicate that the temperate population is more vulnerable to global warming and to heat events, in agreement with similar finding for the closely related species *Perisesarma guttatum* (A. Milne Edwards, 1869) (Fusi et al., 2015).

The analyses of haemolymph dissolved oxygen content for the Kenyan population showed an overall decrease in oxygen levels as temperature increases, with a markedly lower level of oxygen during respiration in air than water. This pattern may indicate that animals from this population adjust the metabolic rate to endure increased temperatures in air (Hochachka, 1991).

By integrating the results for temperature-dependent routine metabolic rates with the thermal data series recorded in the field and the tidal regimes, we developed a diagram that predicts the daily metabolic requirements of the two study populations (Fig. 6). The temperature recorded by loggers was used as body temperature of animals when above and below ground during neap and spring tides and the graph shows MO_2 calculated for those temperatures. The results indicate that, theoretically, Kenyan individuals are able to mobilize a wider thermal response than South African conspecifics (Fig. 6). Importantly, the figure highlights the fact that, although individuals from Kenya exhibit a pronounced increase of metabolic rate in air, they can rely on the cooler environment of their burrows (recorded as below ground temperature), especially

Fig. 6 Hourly MO_2 predicted for *Neosarmatium africanum* during Neap Tide (A) and Spring Tide (B) on the basis of temperatures measured above ground and below ground (see the legend in the graph). Shaded bars indicate the hours flooded at both sites during spring tides



during spring tides, enabling them to buffer the heat load accumulated during above ground activity (Edney, 1961). *N. africanum* is fully active only when its habitat within the mangrove forest is uncovered by water at spring and neap tide (Micheli et al., 1991; Fratini et al., 2011). Diurnal low tides, especially during neap tides, often correspond to the hottest hours of the day, maximizing the risk of thermal stress and desiccation (Porter & Gates, 1969; Kearney et al., 2012; Sunday et al., 2014). In contrast, the South African population has a weaker thermal response, exhibiting similar oxygen consumption above and below ground.

We interpret the results of this study as an indication that the thermal sensitivities of the two populations differ and that the temperate population in South Africa is likely to be more vulnerable to heat events, suggesting a weak capacity to tolerate climate warming. In contrast, the tropical Kenyan population shows the ability to endure heat stress by increasing its respiratory rate to meet heat-induced increases in oxygen demand (Verberk et al., 2015). Indeed, tropical and temperate thermal specialists may maximize their fitness within a narrow thermal niche and minimize maintenance costs, showing a residual

capacity for phenotypic plasticity and acclimation responses (Verberk et al., 2015). Other studies have confirmed that environmental temperatures can shape thermal physiology, and that higher temperature variability increases the thermal sensitivity of species (e.g. Paaajmans et al., 2013). This may be one reason why the Kenyan population has evolved a more variable thermal response with a marked ability to endure higher temperatures in air than the South African population. Further studies that involve other proxies such as Heat Shock Protein production, behavioural assays and lactate/succinate production could confirm this (i.e. Marshall et al., 2011, 2013).

Conclusion

Our results indicate that the findings of earlier studies that tropical species are more vulnerable to climate warming than temperate species are an oversimplification when considering species that span a wide range of latitudes (Deutsch et al., 2008; Sunday et al., 2012) and display bimodal breathing strategy (Fusi et al., 2016). The vulnerability of species is more complex and goes beyond explanations derived from

general temperature envelope models based on latitudinal gradients and climate, especially when species' ranges are broad so that different populations are exposed to a wide range of climatic conditions. Our data show that some tropical ectotherms can show adaptation of their physiology that makes them more resilient to global warming than temperate ones. This study adds data on the thermal sensitivity of intertidal tropical and temperate species (Poloczanska et al., 2013) which are still largely overlooked in the estimation of the community temperature index (CTI, Stuart-Smith et al., 2015), a recent and potentially powerful instrument to assess ecosystem thermal vulnerability. Resilience to either heat events or chronic heating can also be highly modified by behaviour. In the case of *N. africanum* this includes modulating its activity below and above ground, balancing its foraging time and burrow occupancy (Sih et al., 2010; Nemeth et al., 2013) to buffer thermal stress.

Acknowledgements The study was supported by SP3-People (Marie Curie) IRSES Project CREC (No. 247514). FG was funded by the Intra-European Fellowship (ex Marie Curie) Number 221017, FP7. This work is based upon research supported by the South African Research Chairs Initiative of the Department of Science and Technology and the National Research Foundation. MF and DD were supported also by DD baseline funding from King Abdullah University of Science and Technology (KAUST). We thank Jenny Marie Booth, Sara Cilio, Bruce Mostert, Laura Sbaragli and Irene Ortolani for fundamental help during Kenyan and South African laboratory and fieldwork.

Compliance with ethical standards

Ethical approval All applicable international, national and/or institutional guidelines for the care and use of animals were followed. Furthermore, all procedures performed in studies involving animals were in accordance with the ethical standards of the institution or practice at which the studies were conducted.

References

- Anderson, M. J., R. N. Gorley & K. R. Clarke, 2008. Permanova + for primer: guide to software and statistical methods, 1st edn. Primer-E, Plymouth, 214 p.
- Andreatta, A., M. Fusi, I. Cameldi, F. Cimò, S. Carnicelli & S. Cannicci, 2014. Mangrove carbon sink. Do burrowing crabs contribute to sediment carbon storage? Evidence from a Kenyan mangrove system. *Journal of Sea Research* 85: 524–533.
- Baldanzi, S., N. F. Weidberg, M. Fusi, S. Cannicci, C. D. McQuaid & F. Porri, 2015. Contrasting environments shape

- thermal physiology across the spatial range of the sandhopper *Talorchestia capensis*. *Oecologia* 179: 1067–1078.
- Bates, D. M., 2010. Fitting linear mixed-effects models using lme4. <http://lme4.r-forge.r-project.org/IMMwR/lrgprt.pdf>.
- Berti, R., S. Cannicci, S. Fabbri & G. Innocenti, 2008. Notes on the structure and the use of *Neosarmatium meinerti* and *Cardisoma carnifex* burrows in a Kenyan mangrove swamp (Decapoda Brachyura). *Ethology Ecology & Evolution* 20: 101–113.
- Bright, D. B. & C. L. Hogue, 1972. A synopsis of the burrowing land crabs of the world and list of their arthropod symbionts and burrow associates. Una sinopsis mundial de los cangrejos terrestres de madrigueras y lista de sus artrópodos simbioses y madrigueras asociadas. *Contributions in Science* 20: 1–58.
- Clarke, A. & K. P. P. Fraser, 2004. Why does metabolism scale with temperature? *Functional Ecology* 18: 243–251.
- Deutsch, C. A., J. J. Tewksbury, R. B. Huey, K. S. Sheldon, C. K. Ghalambor, D. C. Haak & P. R. Martin, 2008. Impacts of climate warming on terrestrial ectotherms across latitude. *Proceedings of the National Academy of Sciences of the United States of America* 105: 6668–6672.
- Dittmann, S., 1996. Effects of macrobenthic burrows on infaunal communities in tropical tidal flats. *Marine Ecology Progress Series* 134: 119–130.
- Duke, N., J. O. Meynecke, S. Dittmann, A. M. Ellison, K. Anger, U. Berger, S. Cannicci, K. Diele, K. C. Ewel, C. D. Field, N. Koedam, S. Y. Lee, C. Marchand, I. Nordhaus & F. Dahdouh-Guebas, 2007. A world without mangroves? *Science* 317: 41–43.
- Edney, E. B., 1961. The water and heat relationship of fiddler crabs (*Uca* spp.). *Transactions of the Royal Society of South Africa* 36: 71–91.
- Eliason, E. J., T. D. Clark, M. J. Hague, L. M. Hanson, Z. S. Gallagher, K. M. Jeffries, M. K. Gale, D. A. Patterson, S. G. Hinch & A. P. Farrell, 2011. Differences in thermal tolerance among sockeye salmon populations. *Science* 332: 109–112.
- Fratini, S., A. Sacchi & M. Vannini, 2011. Competition for mangrove leaf litter between two East African crabs, *Neosarmatium meinerti* (Sesarmidae) and *Cardisoma carnifex* (Gecarcinidae): a case of kleptoparasitism? *Journal of Ethology* 29: 481–485.
- Frederich, M. & H. O. Pörtner, 2000. Oxygen limitation of thermal tolerance defined by cardiac and ventilatory performance in spider crab, *Maja squinado*. *American Journal of Physiology—Regulatory, Integrative and Comparative Physiology* 279: R1531–R1538.
- Fusi, M., F. Giomi, S. Babbini, D. Daffonchio, C. D. McQuaid, F. Porri & S. Cannicci, 2015. Thermal specialization across large geographical scales predicts the resilience of mangrove crab populations to global warming. *Oikos* 124: 784–795.
- Fusi, M., S. Cannicci, D. Daffonchio, B. Mostert, H.-O. Pörtner & F. Giomi, 2016. The trade-off between heat tolerance and metabolic cost drives the bimodal life strategy at the air-water interface. *Scientific Reports Nature Publishing Group* 6: 19158.
- Gaitán-Espitia, J. D., L. D. Bacigalupe, T. Opitz, N. A. Lagos, T. Timmermann & M. A. Lardies, 2014. Geographic variation in thermal physiological performance of the intertidal crab

- Petrolisthes violaceus* along a latitudinal gradient. The Journal of experimental biology 217: 4379–4386.
- Gaston, K. J., S. L. Chown, P. Calosi, J. Bernardo, D. T. Bilton, A. Clarke, S. Clusella-Trullas, C. K. Ghalambor, M. Konarzewski, L. S. Peck, W. P. Porter, H. O. Pörtner, E. L. Rezende, P. M. Schulte, J. I. Spicer, J. H. Stillman, J. S. Terblanche & M. van Kleunen, 2009. Macrophysiology: a conceptual reunification. The American Naturalist 174: 595–612.
- Gillikin, D. P., S. De Grave & J. Tack, 2001. The occurrence of the semi-terrestrial shrimp *Merguia oligodon* (De Man, 1888) in *Neosarmatium smithi* H. Milne Edwards, 1853 burrows in Kenyan mangroves. Crustaceana 74: 505–507.
- Gillikin, D. P., B. De Wachter & J. F. Tack, 2004. Physiological responses of two ecologically important Kenyan mangrove crabs exposed to altered salinity regimes. Journal of Experimental Marine Biology and Ecology 301: 93–109.
- Gilman, E. L., J. Ellison, N. C. Duke & C. Field, 2008. Threats to mangroves from climate change and adaptation options: a review. Aquatic Botany 89: 237–250.
- Giomi, F. & H.-O. Pörtner, 2013. A role for haemolymph oxygen capacity in heat tolerance of eurythermal crabs. Frontiers in Physiology 4: 110.
- Giomi, F., C. Mandaglio, M. Ganmanee, G.-D. Han, Y.-W. Dong, G. A. Williams & G. Sarà, 2016. The importance of thermal history: costs and benefits of heat exposure in a tropical, rocky shore oyster. The Journal of experimental biology 219: 686–694.
- Greenaway, P. & C. A. Farrelly, 1984. The venous system of the terrestrial crab *Ocypode cordimanus* (Desmarest 1825) with particular reference to the vasculature of the lungs. Journal of Morphology 181: 133–142.
- Hartnoll, R. G., 1975. The Grapsidae and Ocypodidae (Decapoda: Brachyura) of Tanzania. Journal of Zoology 177: 305–328.
- Hochachka, P. W., 1991. Temperature: the ectothermy option Phylogenetic and biochemical perspectives. Biochemistry and Molecular Biology of Fishes 1: 313–322.
- Hoegh-Guldberg, O. & J. F. Bruno, 2010. The impact of climate change on the world's marine ecosystems. Science (New York, N.Y.) 328: 1523–1528.
- Huey, R. B., M. R. Kearney, A. Krockenberger, J. A. M. Holtum, M. Jess & S. E. Williams, 2012. Predicting organismal vulnerability to climate warming: roles of behaviour, physiology and adaptation. Philosophical Transactions of the Royal Society of London. Series B, Biological Sciences 367: 1665–1679.
- Kearney, M. & W. Porter, 2009. Mechanistic niche modelling: combining physiological and spatial data to predict species' ranges. Ecology Letters 12: 334–350.
- Kearney, M. R., A. Matzelle & B. Helmuth, 2012. Biomechanics meets the ecological niche: the importance of temporal data resolution. Journal of Experimental Biology 215: 1422–1424.
- Kitheka, J. U., B. O. Ohowa, B. M. Mwashote, W. S. Shimbira, J. M. Mwaluma & J. M. Kazungu, 1996. Water circulation dynamics, water column nutrients and plankton productivity in a well-flushed tropical bay in Kenya. Journal of Sea Research 35: 257–268.
- Kristensen, E., 2008. Mangrove crabs as ecosystem engineers; with emphasis on sediment processes. Journal of Sea Research 59: 30–43.
- Lee, S. Y., 1997. Potential trophic importance of the faecal material of the mangrove sesarmin crab *Sesarma masse*. Marine Ecology Progress Series 159: 275–284.
- Lee, S. Y., 2008. Mangrove macrobenthos: assemblages, services, and linkages. Journal of Sea Research 59: 16–29.
- Lovelock, C. E., D. R. Cahoon, D. A. Friess, G. R. Guntenspergen, K. W. Krauss, R. Reef, K. Rogers, M. L. Saunders, F. Sidik, A. Swales, N. Saintilan, L. X. Thuyen & T. Triet, 2015. The vulnerability of Indo-Pacific mangrove forests to sea-level rise. Nature 526: 559.
- Macnae, W., 1968. A general account of the fauna and Flora of Mangrove Swamps and Forests in the Indo-West-Pacific Region. Advanced in marine Biology 6: 73–270.
- Macnae, W. & M. Kalk, 1962. The ecology of the Mangrove Swamps at Inhaca Island, Mozambique. Journal of Ecology 50: 19–34.
- Marshall, D. J. & C. D. McQuaid, 2011. Warming reduces metabolic rate in marine snails: adaptation to fluctuating high temperatures challenges the metabolic theory of ecology. Proceedings Biological sciences/The Royal Society 278: 281–288.
- Marshall, D. J., C. D. McQuaid & G. A. Williams, 2011. Non-climatic thermal adaptation: implications for species' responses to climate warming. Biology Letters 7: 160.
- Marshall, D. J., N. Baharuddin & C. D. McQuaid, 2013. Behaviour moderates climate warming vulnerability in high-rocky-shore snails: interactions of habitat use, energy consumption and environmental temperature. Marine Biology 160: 2525–2530.
- Micheli, F., F. Gherardi & M. Vannini, 1991. Feeding and burrowing ecology of two East African mangrove crabs. Marine Biology 111: 247–254.
- Nemeth, Z., F. Bonier & S. MacDougall-Shackleton, 2013. Coping with uncertainty: integrating physiology, behavior, and evolutionary ecology in a changing world. Integrative and Comparative Biology 53: 960–964.
- Paaijmans, K. P., R. L. Heinig, R. A. Seliga, J. I. Blanford, S. Blanford, C. C. Murdock & M. B. Thomas, 2013. Temperature variation makes ectotherms more sensitive to climate change. Global Change Biology 19: 2373–2380.
- Poloczanska, E. S., C. J. Brown, W. J. Sydeman, W. Kiessling, D. S. Schoeman, P. J. Moore, K. Brander, J. F. Bruno, L. B. Buckley, M. T. Burrows, C. M. Duarte, B. S. Halpern, J. Holding, C. V. Kappel, M. I. O'Connor, J. M. Pandolfi, C. Parmesan, F. Schwing, S. A. Thompson & A. J. Richardson, 2013. Global imprint of climate change on marine life. Nature Climate Change 3: 919–925.
- Porter, W. & D. Gates, 1969. Thermodynamic equilibria of animals with environment. Ecological Monographs 39: 227–244.
- Pörtner, H., 2001. Climate change and temperature-dependent biogeography: oxygen limitation of thermal tolerance in animals. Naturwissenschaften 88: 137–146.
- Quisthoudt, K., J. Adams, A. Rajkaran, F. Dahdouh-Guebas, N. Koedam & C. F. Randin, 2013. Disentangling the effects of global climate and regional land-use change on the current and future distribution of mangroves in South Africa. Biodiversity and Conservation 22: 1369–1390.

- R Development Core Team, 2014. R: a language and environment for statistical computing. <http://www.R-project.org>. R Foundation for Statistical Computing, Vienna, <http://www.r-project.org>.
- Ragionieri, L., S. Cannicci, C. D. Schubart & S. Fratini, 2010. Gene flow and demographic history of the mangrove crab *Neosarmatium meinerti*: a case study from the western Indian Ocean. *Estuarine, Coastal and Shelf Science* 86: 179–188.
- Ragionieri, L., S. Fratini & C. D. Schubart, 2012. Revision of the *Neosarmatium meinerti* species complex (Decapoda: Brachyura: Sesarmidae), with descriptions of three pseudocryptic Indo-West Pacific species. *The Raffles Bulletin of Zoology* 60: 71–87.
- Rajkaran, A. & J. Adams, 2012. The effects of environmental variables on mortality and growth of mangroves at Mngazana Estuary, Eastern Cape, South Africa. *Wetlands Ecology and Management* 20: 297–312.
- Rezende, E. L., L. E. Castaneda & M. Santos, 2014. Tolerance landscapes in thermal ecology. *Functional Ecology* 28: 799–809.
- Ridd, P. V., 1996. Flow through animal burrows in Mangrove creeks. *Estuarine, Coastal and Shelf Science* 43: 617–625.
- Roznik, E. A. & R. A. Alford, 2012. Does waterproofing Thermochron iButton dataloggers influence temperature readings? *Journal of Thermal Biology Elsevier* 37: 260–264.
- Schurmann, H. & J. F. Steffensen, 1992. Lethal oxygen levels at different temperatures and the preferred temperature during hypoxia of the Atlantic cod, *Gadus morhua* L. *Journal of Fish Biology* 41: 927–934.
- Sih, A., J. Stamps, L. H. Yang, R. McElreath & M. Ramenofsky, 2010. Behavior as a key component of integrative biology in a human-altered world. *Integrative and Comparative Biology* 50: 934–944.
- Sinclair, B. J., K. E. Marshall, M. A. Sewell, D. L. Levesque, C. S. Willett, S. Slotsbo, Y. Dong, C. D. G. Harley, D. J. Marshall, B. S. Helmuth & R. B. Huey, 2016. Can we predict ectotherm responses to climate change using thermal performance curves and body temperatures? *Ecology Letters* 19: 1372–1385.
- Smith, T. J., K. G. Boto, S. D. Frusher & R. L. Giddins, 1991. Keystone species and mangrove forest dynamics: the influence of burrowing by crabs on soil nutrient status and forest productivity. *Estuarine, Coastal and Shelf Science* 33: 419–432.
- Stieglitz, T., P. Ridd & P. Müller, 2000. Passive irrigation and functional morphology of crustacean burrows in a tropical mangrove swamp. *Hydrobiologia* 421: 69–76.
- Stuart-Smith, R. D., G. J. Edgar, N. S. Barrett, S. J. Kininmonth & A. E. Bates, 2015. Thermal biases and vulnerability to warming in the world's marine fauna. *Nature* Nature Publishing Group 528: 1–17.
- Sunday, J. M., A. E. Bates & N. K. Dulvy, 2011. Global analysis of thermal tolerance and latitude in ectotherms. *Proceedings Biological sciences/The Royal Society* 278: 1823–1830.
- Sunday, J. M., A. E. Bates & N. K. Dulvy, 2012. Thermal tolerance and the global redistribution of animals. *Nature Climate Change* Nature Publishing Group 2: 686–690.
- Sunday, J. M., A. E. Bates, M. R. Kearney, R. K. Colwell, N. K. Dulvy, J. T. Longino & R. B. Huey, 2014. Thermal-safety margins and the necessity of thermoregulatory behavior across latitude and elevation. *Proceedings of the National Academy of Sciences of the United States of America* 111: 5610–5615.
- Terblanche, J. S., A. A. Hoffmann, K. A. Mitchell, L. Rako, P. C. Roux & S. L. Chown, 2011. Ecologically relevant measures of tolerance to potentially lethal temperatures. *10: 3713–3725*.
- Tomlinson, P. B., 1986. The botany of mangroves. *Cambridge Tropical Biology Series*. 234: 373–374.
- Verberk, W. C. E. P., F. Bartolini, D. J. Marshall, H.-O. Pörtner, J. S. Terblanche, C. R. White & F. Giomi, 2015. Can respiratory physiology predict thermal niches? *Annals of the New York Academy of Sciences* 179: 1–16.
- Verberk, W. C. E. P., J. Overgaard, R. Ern, M. Bayley, T. Wang, L. Boardman & J. S. Terblanche, 2016. Does oxygen limit thermal tolerance in arthropods? A critical review of current evidence. *Comparative Biochemistry and Physiology - Part A: Molecular and Integrative Physiology* The Authors 192: 64–78.
- Warren, J. H. & A. J. Underwood, 1986. Effects of burrowing crabs on the topography of mangrove swamps in New South Wales. *Journal of Experimental Marine Biology and Ecology* 102: 223–235.
- Williams, S. E., L. P. Shoo, J. L. Isaac, A. A. Hoffmann & G. Langham, 2008. Towards an Integrated Framework for Assessing the Vulnerability of Species to Climate Change. *PLoS Biology* 6: 6.