

Dissipative DNA nanotechnology

Erica Del Grosso¹, Elisa Franco^{2,*}, Leonard J. Prins^{3,*}, Francesco Ricci^{1,*}

¹ Department of Chemistry, University of Rome, Tor Vergata, Via della Ricerca Scientifica, 00133, Rome, Italy; ² Department of Mechanical and Aerospace Engineering, University of California at Los Angeles, 420 Westwood Plaza, Los Angeles, CA 90095, USA; ³ Department of Chemical Sciences, University of Padua, Via Marzolo 1, 35131 Padua, Italy

* Corresponding authors:

francesco.ricci@uniroma2.it; leonard.prins@unipd.it; efranco@seas.ucla.edu

Abstract

DNA nanotechnology has emerged as a powerful tool to precisely design and control molecular circuits, machines, and nanostructures. A major goal in this field is to build devices with life-like properties such as directional motion, transport, communication and adaptation. In this Review, we provide an overview of the nascent field of dissipative DNA nanotechnology, which aims at developing life-like systems by combining programmable nucleic acid reactions with energy dissipating processes. We first delineate the notions, terminology and characteristic features of dissipative DNA-based systems and then we survey DNA-based circuits, devices and materials whose functions are controlled by chemical fuels. We emphasize how energy consumption enables these systems to perform work and cyclical tasks, in contrast with DNA devices that operate without dissipative processes. The ability to take advantage of chemical fuel molecules brings dissipative DNA systems closer to active molecular devices that exist in nature.

Nucleic acid nanotechnology has produced a rapidly expanding toolkit of engineered DNA and RNA systems¹. The high predictability of non-covalent interactions, primarily Watson–Crick–Franklin base-pairing, makes it possible to program how individual and multiple nucleic acid strands fold and self-assemble, determining their equilibrium and transient configuration¹. A growing platform of customizable nucleic-acid scaffolds includes assemblies with sizes ranging from a few nanometers (kilodalton) to hundreds of micrometers (megadalton), and a complexity that often exceeds that of naturally evolved scaffolds in cells¹. Less complex yet easier to control nucleic-acid devices have been developed to sense, or respond to, stimuli such as other nucleic acids, small molecules, or proteins². Finally, by taking advantage of conformational changes in multi-stranded nucleic acid duplexes (gates), systematic and scalable frameworks have been developed to build logic circuits, dynamic systems, strand-displacement cascades, and neural networks that often include hundreds of components³. These technical achievements, combined with the low cost of synthesis, biocompatibility, and ease of conjugation with other compounds, make nucleic acid systems particularly attractive as designable materials and machines for applications that include sensing⁴, computing⁵, molecular transport⁶, and drug delivery^{7,8}.

An emerging frontier in nucleic acids nanotechnology is the synthesis of devices and materials with the capacity to exhibit life-like behavior, such as directional motion, transport, communication and adaptation^{9,10}. Yet, in the majority of cases the system's response is determined by a change in the free energy landscape induced by the input, which causes the system to progress toward a new stable thermodynamic equilibrium^{4,11}. Once that equilibrium state is reached these systems become permanently non-responsive to the original stimulus. This marks a strong contrast with the non-equilibrium nature of living systems that maintain their responsiveness thanks to chemically-fueled processes. Energy is stored in thermodynamically activated but kinetically stable molecules¹², such as ATP, and is used to repeatedly power biomolecular machines such as pumps and motors, and to drive the dynamic formation of self-assembled structures such as actin and microtubules¹³. Energy dissipation provides a way to regulate chemical processes with exquisite spatiotemporal control, and is at the basis of phenomena associated to life^{14,15}.

In this Review we describe functional DNA systems that exploit chemical energy for their operation, and we propose to use the term “dissipative DNA nanotechnology” to describe this emerging field. We first clarify the concept of energy dissipation, introducing

relevant definitions and terminology, and we put a particular emphasis on the conceptual differences between dissipative DNA nanotechnology and the consolidated field of dynamic DNA nanotechnology. A significant part of the Review is dedicated to an illustration of applications that range from out-of-equilibrium reactions, to nanodevices and responsive polymer systems. We conclude by discussing open challenges and promising research directions that will enable taking full advantage of dissipative DNA nanotechnology for the design of artificial systems with life-like properties.

Dynamic vs Dissipative DNA systems

In DNA nanotechnology the majority of responsive DNA systems rely on the activation of a series of DNA-hybridization and DNA-exchange reactions upon the addition of an “input” DNA strand. With this concept, a variety of nanoscale devices made of synthetic DNA sequences have been rationally designed to undergo controlled motion or reconfiguration and exert a specific function. These devices and systems respond to the addition of input single stranded DNA or RNA (ssDNA/ssRNA) sequences or other molecular cues and they are conventionally classified under the term dynamic DNA nanotechnology¹¹. Considering the existence of dynamic DNA nanotechnology as a well-established field, we start by discussing the conceptual differences between dynamic and dissipative DNA nanotechnology (Box 1).

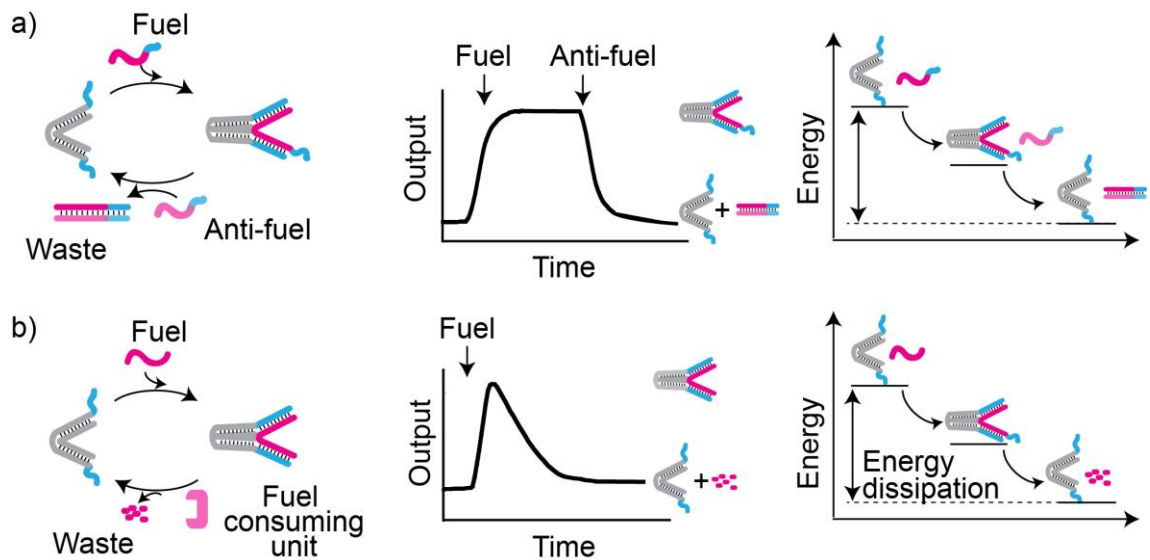
A key strategy that enabled the development of dynamic DNA systems is the toehold-mediated (or toehold-exchange) strand displacement reaction, a process through which an “input” DNA strand is able to react with a preformed duplex, leading to the displacement of another single-stranded DNA sequence in a highly controlled manner^{4,11,16}. Strand displacement reactions are highly programmable and sequence-specific and can be used to activate DNA-based devices¹⁷ but also to trigger the assembly and disassembly of DNA nanostructures¹⁸⁻²⁰ with high accuracy and precision. From a conceptual point of view, the addition of the “input” DNA strand (in the relative literature generally referred to as “fuel”) alters the free energy landscape and the system adapts spontaneously by shifting its composition toward a set of complexes that reside at a new global minimum. Activation of the ‘input’ DNA strand via a molecular input (such as other DNA strands or biomolecules) or environmental stimuli (pH or light) provides a means to indirectly control the exchange reaction and, consequently, the function exerted by the DNA-device^{21,22}. Alternatively, the subsequent addition of a DNA strand that is able to sequester the “input” DNA strand (a so-called ‘anti-fuel’) switches the system back to the original state, but always controlled by a thermodynamically driven process²³. In dynamic DNA systems of higher complexity, input ‘fuel’ molecules activate key DNA components for the release of oligonucleotides that then participate further in downstream steps. These components are DNA fuel-gates that power many strand displacement cascades by the triggered release of output for downstream processing¹¹. Such fuel-gates therefore play a dual role as information carrier and as activator for additional processes by releasing secondary DNA fuel-strands. After the cascade has been triggered by the initial addition of the DNA fuel, these fuel-gates are gradually consumed as the system progresses towards

the final thermodynamic state. Consequently, upon arrival at the final state not only has the initial trigger become thermodynamically deactivated, but so have also these fuel-gates. This implies that in many complex dynamic DNA systems, a new cycle of operation cannot be reinitiated just by adding a new batch of the initial trigger; it requires also a replenishment of functional system components (i.e. the fuel-gates). To summarize these observations, we can say that dynamic DNA nanotechnology operates strictly under “thermodynamic control” and the observed kinetic behavior, which may be very sophisticated, is defined by the mechanistic pathway that brings the system to the thermodynamically stable final state.

In contrast to the thermodynamic control in dynamic DNA nanotechnology, the approach of dissipative DNA nanotechnology requires the presence of an energy-dissipating chemical reaction that converts molecules with high chemical potential (fuel) into molecules with lower chemical potential (waste)¹². In these systems, the addition of fuel alters the free energy landscape which, however, continues to change in time as a result of fuel-to-waste conversion. The systems components respond to the addition of fuel, but this response is only transient, and the system returns to the initial state the after fuel-to-waste conversion is complete. This behavior is autonomous and, unlike most dynamic DNA systems, is not directed step-wise by the sequential addition of multiple inputs. In addition, once the fuel is consumed and the system’s components have returned to their original state, it is possible to re-start a cycle of operation by simply adding a new batch of fuel, without having to replenish the pool of functional components (Box 1, panel b). A characteristic feature of dissipative DNA nanotechnology is that kinetic, rather than thermodynamic, processes control the active state of the system. A fundamental implication is that the presence of an energy dissipating process enables operation under non-equilibrium conditions, which is an essential feature of living systems.

Box 1| Dissipative vs dynamic DNA systems. We illustrate the conceptual difference between dynamic and dissipative DNA systems using the DNA-based molecular tweezer developed by Yurke, Turberfield *et al.* as an example. The tweezer can be operated either as a dynamic device or as a dissipative device depending on the reactions introduced to control its open/closed state. To realize a dynamic DNA device, the tweezer is cycled between open and closed conformations by alternating additions of so-called DNA “fuel” and “anti-fuel” (panel a). Both the opening and closing of the DNA tweezer are thermodynamically controlled processes: the tweezer adapts to the change in free energy landscape induced when the fuel and anti-fuel strands are added. The change in free energy between start and end of one open-close-open cycle corresponds to the hybridization energy of the fuel/anti-fuel duplex. Because the operation of the tweezer is controlled by thermodynamics, a full cycle does not take place spontaneously and the system resides indefinitely in either the open or closed state until a new stimulus is provided.

A dissipative version of the same device can be achieved by creating conditions in which a fuel molecule is chemically degraded over time and converted to waste. This can be done, for example, by introducing a nuclease that degrades the nucleic acid fuel closing the tweezers (panel b). As a result of energy dissipation, the energy landscape gradually changes over time: the tweezer adapts to that change and yields a spontaneous open-closed-open cycle triggered by the addition of fuel. The energy that is consumed in one cycle corresponds to the difference in chemical energy potential between fuel and waste. The tweezer resides in the closed state for an interval of time that is determined by the rate at which fuel is consumed, allowing to control the kinetic operation of the tweezers.



In light of these observations, it is important to clearly disambiguate the concepts of fuel and waste in dynamic and dissipative DNA nanotechnology (Box 2, glossary). Fuel in dynamic DNA nanotechnology is used to describe not only the initial nucleic acid input that activates the fuel-gates described above, but also the strands that are released from the fuel gates and trigger downstream processes. At the end of the process the fuel ends up in a thermodynamically stable inert nucleic acid complex (waste) that often includes also (part of) the fuel-gates. In dissipative DNA nanotechnology the term fuel describes an input of the system that is chemically or enzymatically converted to waste. Examples of fuels described in the later sections are nucleoside triphosphates that serve either for the polymerization or for the ligation of nucleic acid strands, which subsequently activate the system through hybridization with systemic nucleic acid strands. On occasion also pre-synthesized nucleic acid strands themselves are directly used as chemical fuels.

Box 2| Glossary

Dynamic DNA nanotechnology

DNA systems that dynamically respond to the addition of fuel strands by adapting in a thermodynamically controlled fashion to the new energy landscape.

Fuel (in this context): a molecular input (such as nucleic acid strand, pH or small molecule) that serves as 'input' for activation of the system by initiating a strand-displacement reaction or other fuel-induced downstream processes.

Anti-fuel: a molecular input able to displace the fuel (such as a DNA strand complementary to the fuel-strand).

Waste (in this context): a thermodynamically stable anti-fuel/fuel complex (for example, a fuel/anti-fuel duplex).

Fuel-gate: a DNA system able to process input molecules to release secondary fuels.

Dissipative DNA nanotechnology

DNA systems that incorporate a chemical fuel-to-waste conversion. Chemical energy stored in the fuel is exploited to drive the system out-of-equilibrium.

Fuel (in this context): a molecular input (such as nucleic acid strand, ATP) with high chemical potential that activates a DNA-based system.

Waste (in this context): product of lower chemical potential obtained after chemical degradation of the fuel molecule.

Energy consumption: exploitation of the free energy released from the conversion of fuel into waste.

It is also important to clarify the concept of “non-equilibrium”, because the term is used with some ambiguity in the literature related to dissipative self-assembly²⁴⁻²⁶. A non-equilibrium state of a chemical process occurs when the rate of the forward reaction is different from the backward reaction. *Transient non-equilibrium* conditions can be installed in a rather trivial way simply by adding a chemical fuel to the system. An increase in fuel concentration will enhance the forward reaction rate and create a transient non-equilibrium state of the process. The vast majority of systems that will be presented in this Review rely on the installation of such a transient non-equilibrium state which can be re-generated by adding a new batch of fuel.

A non-equilibrium steady-state can only occur in open systems in which fuel is continuously replenished and waste is eliminated. However, this in itself is not sufficient to ensure the composition of the system is not dictated solely by the relative thermodynamic stabilities of its components. A non-equilibrium steady-state implies that also at constant fuel (and waste) concentrations the rate of the forward reaction that describes the equilibrium process is different from the backward reaction rate. In the general context of chemically-fueled self-assembly we and others have shown that kinetic asymmetry in the energy dissipation process is an essential prerequisite^{24,27-29}. This aspect has so far not been considered in the context of dissipative DNA nanotechnology, which implies that examples are not yet available in the literature. In the Perspective section we return to this discussion and illustrate the importance of designing DNA-based systems that can operate under non-equilibrium steady state conditions.

Dissipative nucleic acid-based circuits

Life is sustained by out-of-equilibrium processes that are often directed by the outputs of dynamic reaction networks. A canonical example is given by oscillators: in biology, periodic behaviors, such as circadian rhythms, usually occur in the presence of a negative feedback loop that is destabilized by delays or ancillary positive feedback³⁰. Another canonical example of dynamic networks is given by bistable systems, which requires the presence of positive feedback. In these systems, dissipation must be present for the existence of non-equilibrium states. Building on demonstrations of dynamic circuits in synthetic biology^{31,32}, DNA nanotechnology provides many strategies to build dissipative dynamic networks.

Taking inspiration from the architecture of gene networks, Winfree and Kim^{33,34} devised *in vitro* “genelets” that are regulated only via RNA transcripts and strand displacement. A genelet is a short linear DNA template that includes a nicked bacteriophage T7 promoter (Fig. 1a). If an activator DNA strand is bound to the promoter, transcription by T7 RNA polymerase (RNAP) proceeds. If the activator is displaced by an inhibitor strand, T7 RNAP binding is unsuccessful, and transcription is turned off. RNA transcripts produced by genelets can be designed to serve as inhibitors or activators to other genelets (Fig. 1a-b). When bound to a DNA molecule, RNA is degraded by the enzyme RNase H. Genelet circuits are fueled by nucleoside triphosphates, which permit transcription to give high-energy RNA. As RNA bound to DNA is degraded, the chemical energy is dissipated pushing a spontaneous return to the original state. With this strategy, genelets have been used to build a repertoire of feedback networks with complex temporal dynamics such as self-activation³⁵, bistability^{33,36} and oscillations³⁴. The simplest transcriptional oscillator (Fig. 1a-b) includes two genelets connected in a negative feedback loop. The amplitude and frequency of this circuit typically fall in the range of 50-100 nM and 1-3 hours, respectively (Fig. 1c), and can be tuned by changing the concentrations DNA and enzymes. The progressive loss of enzyme activity, as well as the accumulation of abortive transcripts and partially degraded RNA cause oscillations to have fluctuating amplitude and frequency, that cannot be sustained for more than 16-20 hours as exemplified in Fig. 1c^{34,37,38}. Recent work by the Schulman group has demonstrated modified synthetic genelets with improved modularity that can be used to program multi-state systems³⁶. Genelet networks have the potential to serve as a minimal transcription-based regulatory system in synthetic cells, as shown in studies conducted within droplet systems^{38,39}.

An alternative strategy to build dissipative kinetic circuits was developed by Rondelez, Padirac and Fujii and takes advantage of Polymerase–Exonuclease–Nickase (PEN) reactions⁴⁰. The PEN reactions are used to dynamically connect templates that can be activated or repressed by hybridization (Fig. 1d). DNA polymerase extends single stranded domains of active templates; the extended domain is recognized and cleaved by nickases, causing the “replicated” short strand to be released. These short replicated strands can be used to activate or inhibit other templates thereby building circuits. Dissipation is introduced by the nickase and by the exonuclease that respectively release and degrade ssDNA fueling the dynamics; in the absence of these enzymes, the system would reach thermodynamic equilibrium. The PEN toolbox is flexible and was used to build amplifiers, toggle switches, and negative feedback oscillators. The molecular implementation of a Lotka-Volterra predator/prey system described by Montagne, Fujii and Kim^{34,41-44} sustains remarkably robust oscillations for more than 24 hours (Fig. 1e). The PEN system has been used in the context of pattern formation, multiagent systems, and can be tuned to operate in cell media⁴⁵⁻⁴⁷.

Recent work by Deng and Walther⁴⁸ introduced dissipative reactions in dynamic strand displacement (DSD) systems through DNA restriction enzymes (BsaI) and ligases (T4). Here a transient DSD is obtained by calibrating a DNA gate made by two components (termed complex and reporter) to release an output strand upon ligation of the components; after the parts are ligated, excision of the gate by a restriction enzyme introduces a conformational change in the reporter that recaptures the output, generating a feedback loop. Because the ligase operation is fueled by ATP the system produces a transient pulse of output, reverting to a stable state (output not released) when ATP is depleted.

In two recent examples Willner and co-workers demonstrated nucleic acid based dissipative networks using a nickase enzyme (Nt.BbvCI) as fuel-consuming unit. In an initial study they introduced the concept of nucleic acid-based dissipative constitutional dynamic networks demonstrating the possibility to transiently control the catalytic property of a Mg²⁺-ion-dependent DNAzyme and a G-quadruplex-based DNAzyme⁴⁹. More specifically, the authors designed two independent constitutional dynamic networks that were each composed of four duplex DNA structures. The addition of a fuel strand could introduce the time-dependent reconfiguration of the network and up- or down-regulate the different constituents that include two DNAzyme reporter systems. This is the first

demonstration of a constitutional dynamic network coupled to a dissipative behaviour in the field of nucleic-acid nanotechnology and as such could open the field to systems of enhanced complexity such as cascaded dissipative networks and dynamic combinatorial library reactions. An attempt towards this direction was recently proposed by Willner and co-workers that demonstrated dissipative cascaded DNA networks⁵⁰.

The classes of circuits we just described are dissipative systems due to the presence of (enzymatic) reactions that convert fuel into waste molecules of lower chemical potential that do not — or to a lower extent — interact with the systems components. The conceptual difference with dynamic DNA nanotechnology emerges from a comparison with a circuit that has been described in that context. A highly intricate DNA circuit was devised able to develop damped oscillations (rock-paper-scissors oscillator) triggered by the simultaneous addition of three inputs⁵¹. However, contrary to the dissipative systems described above, this system relies entirely on thermodynamically controlled toehold-displacement reactions. The oscillations are a result of a highly sophisticated kinetic pathway that brings the system to the thermodynamic end state. The new thermodynamic equilibrium is reached when all fuel species are converted into waste (that is, hybridized fuel) and, at that stage, cannot be re-activated.

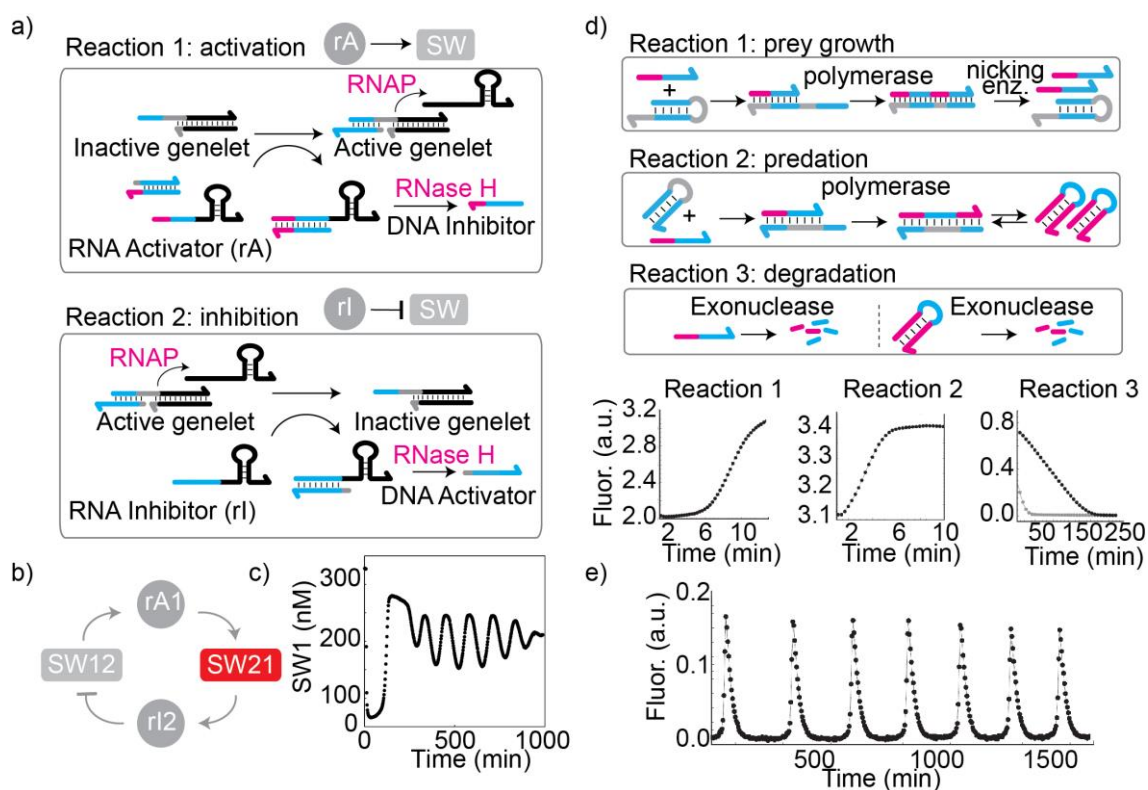


Fig. 1| Nucleic acid circuits operating via dissipative reactions. (a) Genelets are short linear genes transcribing RNA using T7 RNA polymerase (RNAP). Genelets can be activated (Reaction 1) or repressed (Reaction 2); they include a nicked promoter (grey domain), so that a domain of the template strand (light blue) can be displaced or released through toehold-mediated strand displacement (light blue and red domains). Dissipation in the system is introduced by the enzyme RNase H that degrades RNA regulators bound to DNA inhibitors or activators. (b) RNA transcripts produced by a genelet (SW12, dark grey molecules) can be designed to operate as an activator (rA1) for a second genelet (SW21). This last genelet can then transcribe for another RNA strand that act as an inhibitor (rI2) for the first genelet (SW12), generating networks such as in the oscillator.³⁴ (c) Example data showing the temporal evolution of the active state of the genelet SW21 in (b). (d) The PEN toolkit is based on three different processes. In reaction 1 (prey growth), the incomplete DNA templates are activated by inputs (pink-cyan strand) and extended by DNA polymerase; the templates produce outputs upon nicking by a nickase. The fluorescence trace (bottom left) shows the exponential increase of the prey. In reaction 2 (predation), the palindromic predator is duplicated, using and consuming prey. The fluorescence trace (bottom middle) shows the exponential growth of the palindromic predator until all prey is converted into predator. In reaction 3 (degradation), the excess inputs and outputs are degraded by exonucleases, As shown by the fluorescence trace (bottom right). (e) The particular PEN reactions illustrated here, which represent the data in ref. ⁴², generate sustained predator-prey oscillations which are seen by repeated on/off fluorescence.

Chemically fueled DNA walkers

DNA walkers take inspiration from motor proteins such as kinesin and myosin that move along one-dimensional cytoskeletal filaments^{52,53}. A DNA walker is a specific complex or molecule (usually a DNA strand) that achieves processive motion by binding to multiple DNA binding sites placed along a molecular track, also made of DNA^{4,11}. Several variants of DNA walkers achieve motion exclusively through toehold-mediated strand displacement and are not dissipative systems⁵⁴. These walkers operate through thermodynamically controlled processes which are designed such to permit sorting of cargo, processive movement along a programmed path^{7,55-58} or walks up to 300 steps long⁵⁹.

Dissipative reactions make it possible to build simple DNA walkers that achieve autonomous processive motion exploiting chemical fuels. To obtain motor-protein-like processive motion exclusively via strand displacement it was necessary to introduce bipedal walkers⁵⁵⁻⁵⁷, or multiple distinct fuel strands that each activate a particular displacement event in a sequence^{7,58,60}. The need for multi-component walkers was bypassed by introducing catalytic reactions to control the walker operation⁶¹⁻⁶³. The energy dissipating reactions occur at the interface between the walker and its track: the track bound to a foot of the walker is degraded either by an enzyme or by catalytic nucleic-acid sequences. Degradation of the path already covered funnels autonomously future steps of the walker in a specific forward direction. The first example of an autonomous walker by Yin *et al.*⁶¹ employs T4 DNA ligase and two restriction endonucleases (i.e. BstAP I and PflM I) to enable the movement of a 6-nt DNA strand along a DNA track. The DNA track contains three binding sites for the walker, labeled A, B, and C (Fig. 2a). In the absence of ATP the walker is inactive and binds at site A. In the presence of the walker, A and B have complementary sticky ends that can hybridize. Addition of ATP, that acts as the fuel, makes it possible for T4 ligase to catalyze the ligation of the sticky ends (process I) and create the recognition site for the endonuclease PflM I. At the next step (process II) the PflM I cleaves the duplex formed between anchorages A and B, resulting in the movement of the walker at anchorage B. After that, the sticky ends of anchorages B and C can hybridize and can also be ligated by T4 ligase (process III). Also in this case the ligation results in the formation of a recognition site for another endonuclease (BstAP I), that can cut this new duplex, leading to the movement of the walker at anchorage C (process IV).

After this first seminal work, several other examples of autonomous walkers were reported based on nicking enzymes (N.BbvC IB) making it possible to processively navigate networks of tracks^{62,64,65}. An alternative approach was followed by Tian *et al.*⁶⁶ who developed a very simple DNA walker to move along an RNA track by using an RNA-cleaving deoxyribozyme (Fig. 2b); the DNA walker could repeat a number of steps limited exclusively by the number of anchoring sites available. This work was later extended to show processive motion along a DNA origami track with a multi-legged DNA spider⁶³. An important observation is that, even in the presence of an energy dissipation process, the walker cannot proceed indefinitely and its motion is constrained by the length of the track. Additionally, a limitation of these approaches is that the track becomes inert and cannot be used again once the walker has reached the endpoint.

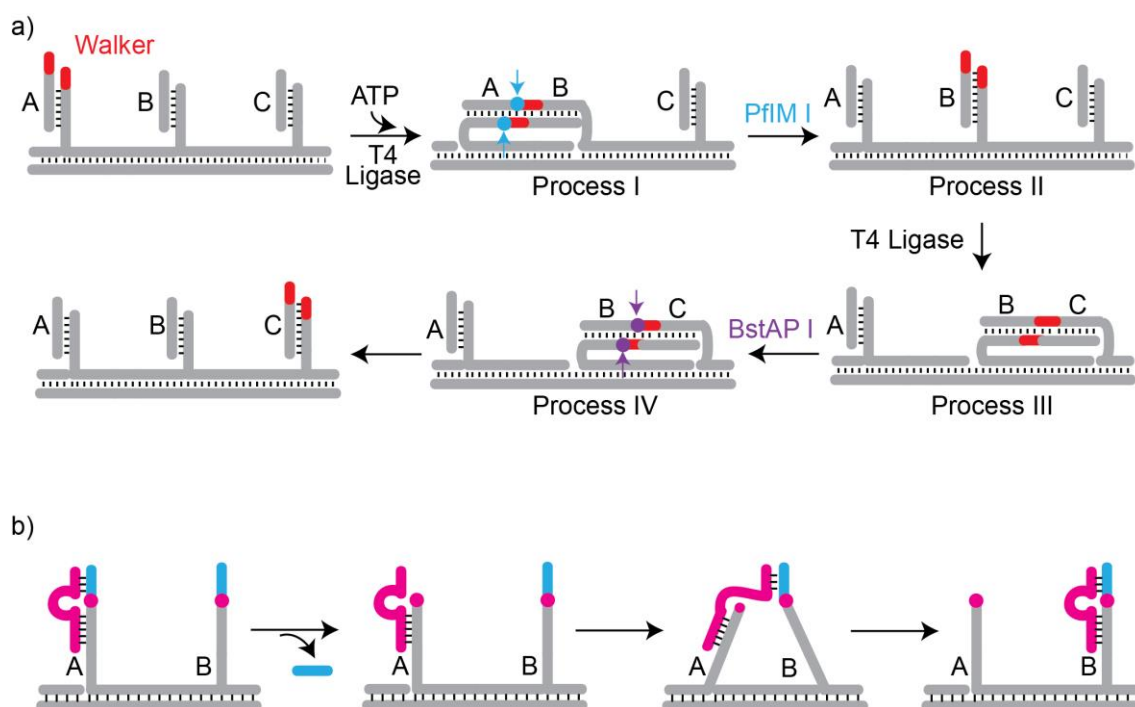


Fig. 2| DNA walkers. DNA molecules can be designed to move along a predefined path via dissipative reactions. (a) A DNA walker strand (red) can processively change location on a track thanks to the concerted action of the T4 ligase (able to ligate consecutive strands) and two restriction nucleases⁶¹ (PflM I and BstAP I) able to cut their specific recognition sites (light blue and purple dots, respectively) so that after each ligation–cutting process the walker strand (red) finds itself located to a strand that is adjacent to its original one (b) A DNA walker strand (pink) can proceed across multiple locations on an RNA track. The walker strand is designed to have a RNA-cleaving ribozyme sequence that can cut the walker binding sites⁶⁶ (pink dots) inducing the spontaneous de-hybridization of the cleaved portion. The free single-stranded domain of the walker strand can thus move toward the next location (B), through a strand displacement reaction. In both examples, motion is autonomous yet limited by the number of binding sites, and a particular track can only be used once as it is degraded during the walker operation.

Dissipative nucleic acid-based devices

Chemically-fuelled dissipative DNA switches

Thanks to the high programmability of DNA-DNA interactions it is fairly straightforward to rationally design synthetic DNA-based sequences (here denoted as switches) that are able to undergo a conformational change in response to a specific input (a DNA sequence, an environmental cue, a small molecule or a protein)⁶⁷. Switches usually operate under strict thermodynamic control but several examples have recently appeared in the literature where their operation can be triggered in a dissipative way. One of the first examples of dissipative DNA nanoswitches⁶⁸ employs a short nucleic acid strand as a fuel and takes advantage of specific DNA sequences that have enzyme-like catalytic activity⁶⁹. More specifically, the authors employed a well-known DNAzyme to control the opening and closing of a DNA tweezer in an autonomous way. A key characteristic of the DNAzyme is the ability to spontaneously cleave the complementary nucleic acid strand upon hybridization. The tweezer is composed of two different synthetic DNA strands (Fig. 3a): one that contains the sequence encoding for the DNAzyme (purple, Fig. 3a) and two 15-nucleotide tails at the two ends of this sequence, and a second DNA strand full complementary to the above described tails. The hybridization of the two strands forms a tweezer-like structure that brings together these two portions in a random-coil conformation, so that the structure is in a “closed state”.

The external addition of a specific DNA-RNA chimera fuel strand complementary to the DNAzyme portion can open the tweezer. Upon the binding of such fuel the catalytic cleavage activity of the DNAzyme is activated and the fuel is cleaved in two short fragments. Because such fragments have a lower affinity for the tweezer strand they de-hybridize from it resulting in the time-dependent return of the system to the original random-coil conformation and the system becomes available for a new cycle. The system shows a reversible behaviour upon successive additions of the RNA substrate for up to eight cycles even if a fluorescence intensity drift was observed over time. The elegance of this system is that energy dissipation is an intrinsic property of the DNA-based system and does not require any kind of enzyme. Using a very similar conformational change tweezer-like DNA switch, Bishop & Klavins reported the opening of a tweezer fueled by an RNA molecule⁷⁰ where dissipative conditions were installed by the presence of a nuclease enzyme (RNase H). A DNA-based oscillating circuit from the genelet toolbox (Section 3) was also demonstrated by Simmel, Winfree and Franco as a molecular clock to direct motion of the tweezer³⁷ (Fig. 3c).

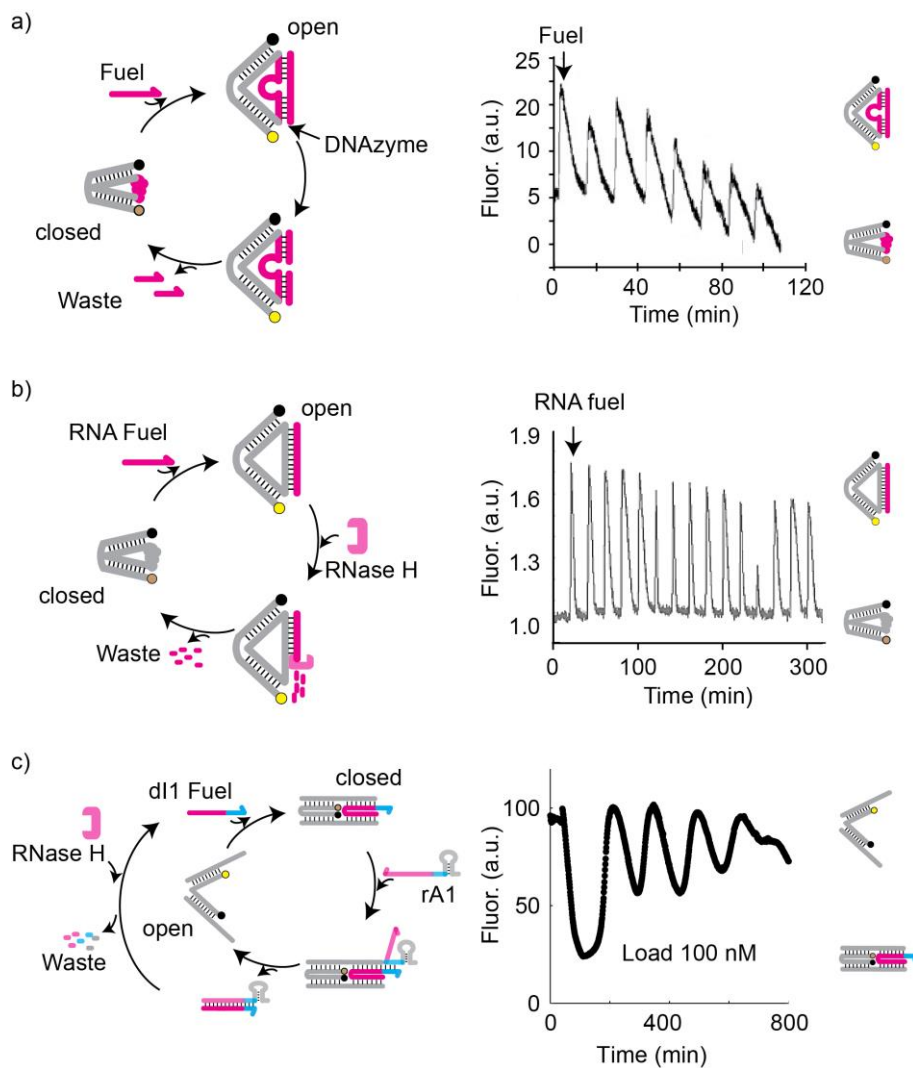


Fig. 3| Dissipative tweezer-like DNA-based switches. (a) In a first example a molecular tweezer made of synthetic DNA strands is designed to contain a self-cleaving DNAzyme domain⁶⁸. Left, schematic representation of the tweezer; right, its fluorescence trace. In the absence of the fuel the tweezer is in a “closed state” (low fluorescence signal). The addition of the specific DNA-RNA chimera fuel can open the tweezer structure (leading to a high fluorescence signal) and trigger the DNAzyme self-cleavage activity. This results in the catalytic cleavage of the fuel and the return of the system to the initial condition. Reversibility of the tweezer for consecutive cycles measured via the fluorescence change associated to the opening/closing of the structure. (b) A similar dissipative behaviour, in controlling the opening/closing of a tweezer, can be achieved by using as a fuel an RNA strand and as a fuel-consuming unit the enzyme RNase H.⁷⁰ Also in this case the tweezer shows reversibility for several consecutive cycles. (c) Alternatively, dissipation can be installed in the tweezer dynamics through the coupling with a genelet-based oscillator (see Fig. 1 b and c)³⁷.

Cargo loading and release via chemically fuelled dissipative DNA devices

Conformational-change mechanisms similar to those described above can also be employed to induce the capture or release of a molecular cargo from a DNA-based system. Many responsive DNA ligand-binding devices have been engineered to date by designing DNA sequences that, in the presence of an effector, undergo a conformational change that affects their affinity for the ligand². As an example, a ligand-binding device can load a specific molecular cargo (a DNA sequence, a small molecule, etc) and release it in the presence of a specific allosteric effector (a different DNA sequence or an environmental cue such as pH)⁷¹. This mechanism resembles what happens in Nature where biological receptors (i.e. enzymes and proteins) are allosterically controlled by different effectors that change their affinity towards a specific substrate.

Recently, a versatile strategy to design a synthetic ligand-binding DNA device that can transiently load and release a molecular cargo was demonstrated⁷². The device is a clamp-like DNA-based receptor that is able to recognize and bind a specific DNA sequence cargo through the formation of a triplex structure (a secondary DNA motif that involves both Watson-Crick-Franklin and Hoogsteen interactions) (Fig. 4a)⁷³. The device is rationally designed so that the addition of a specific fuel RNA strand (purple strand, Fig. 4a), which is able to bind to the loop portion of the device, induces a conformational change resulting in the unfolding of the triplex structure and the consequent release of the DNA cargo. A nuclease enzyme (i.e. RNase H) can specifically recognize the RNA/DNA heteroduplex formed and hydrolyze the RNA fuel strand. This will allow the DNA device to re-bind the DNA cargo with a kinetic that depends on the enzyme (Fig. 4b) and fuel concentration. Multiple load–release cycles can be achieved through repetitive fuel additions demonstrating the reversibility of the system (Fig. 4c).

To further demonstrate the versatility of this strategy, a similar approach was also applied to aptamers⁷⁴, in vitro selected DNA and RNA sequences able to bind a variety of targets, with high affinity and specificity. A dissipative aptamer-based system for the transient release of small molecules (i.e. ATP and cocaine)⁷⁵ was obtained by rationally designing an allosterically-regulated aptamer that, in the presence of a specific DNA strand (fuel), releases its molecular ligand. The fuel, once bound to the aptamer, is specifically degraded through the action of an enzyme (Nt-BsmAI) and this restores the original binding ability of the aptamer (Fig. 4d-e). These examples point to the fact that the scope of dissipative DNA nanotechnology goes beyond the demonstration of autonomous

DNA systems, as it provides adaptable devices with the capacity to control a multitude of biological and non-biological components.

Most systems in dissipative DNA nanotechnology rely on enzymes for conversion and dissipation of chemical energy. However, dissipative DNA devices that do not rely on enzymatic processes were also described using pH-dependent motifs coupled with chemical pH oscillating networks⁷⁶⁻⁸⁰ or enzymatic catalysis⁸¹ and disulfide/thiol reactions using disulfide-linked dimer DNA strands as fuels.⁸²

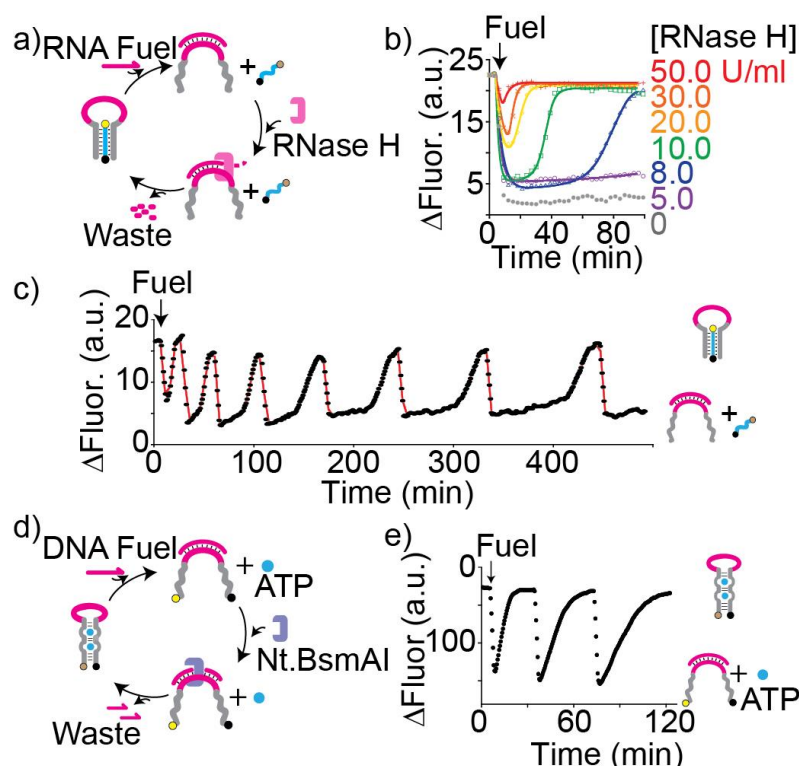


Fig. 4| Ligand-binding DNA-based devices for the transient load and release of a molecular cargo. (a) A clamp-like DNA-based device able to recognize a specific DNA sequence (ligand) through the formation of a triplex structure⁷². An RNA fuel strand binds the loop portion of the device causing its opening and the consequent release of the DNA cargo. As the fuel-consuming unit an endoribonuclease enzyme (RNase H) was employed. The enzyme binds the RNA/DNA heteroduplex and hydrolyzes selectively the RNA portion of the duplex, restoring the initial loading condition. (b) The corresponding fluorescence traces show the modulation of the transient cargo release by varying the concentration of the RNase H (with decreasing concentration of enzyme a slower re-loading of the cargo is observed). (c) The device in panel a shows a highly reversible transient behaviour. (d) Synthetic DNA-based receptor for the transient release of small molecules⁷⁵. Re-engineered ATP-binding aptamer for the reversible transient release of ATP. The aptamer is split in two functional units joined together with a linker domain. The DNA fuel strand is fully complementary to this portion, and its binding to it can cause the opening of the aptamer and the release of the ATP (resulting in high fluorescence signal). Nt.BsmAI, is able to recognize the fuel/linker domain duplex and to selectively cleave the DNA fuel, restoring the original affinity of the aptamer for the ATP (leading to a low fluorescence signal). (e) Kinetic fluorescence traces showing the reversibility of the transient release of ATP following consecutive addition of the fuel strand.

Dissipative DNA-based materials

Thanks to the predictability of base-pairing interactions and the ease of synthesis, synthetic nucleic acids can be conveniently used to build nanoscale structures with quasi-Ångstrom precision¹. Initially, DNA-based nanostructures (DNA origami) were essentially “static” assemblies built by folding long DNA strand backbones through short DNA staples^{83,84}. More recently, these structures have been re-engineered to undergo structural reconfigurations in response to specific chemical inputs^{22,85}, or environmental triggers such as temperature^{86,87} and pH^{19,21}. These “dynamic” DNA structures, however, often operate at thermodynamic equilibrium (i.e. the external trigger causes a change in the free energy landscape), a feature that lacks the adaptability and transientness of naturally-occurring materials. In the next paragraphs we will thus describe chemically-fuelled dissipative DNA-based materials in which the assembly/disassembly process can be controlled by the concurrent presence of an anabolic and catabolic reaction; the first one leading to the self-assembled material, the second one destroying it.

Dissipative DNA-based nanostructures

The first examples of DNA structures controlled through dissipative reactions were proposed by Franco and her group, who demonstrated the possibility of using synthetic genelets (Section 3) to enzymatically-produce nucleic acid fuels controlling the assembly and disassembly of DNA structures (Fig. 5)⁸⁸. RNA produced by genelets was used to activate or deactivate double crossover DNA tiles forming nanotubes. DNA tiles were activated by RNA strands designed to complete the tile connector domains or sticky-ends (Fig. 5a)⁸⁹. Degradation of the connectors by RNase H causes nanotubes to disassemble, and by varying the concentration of RNase H, at a fixed concentration of polymerase, it was possible to control the kinetics of the transient assembly (Fig. 5b). A similar strategy makes it possible to control disassembly of DNA tiles using RNA “invaders” that block their sticky-ends⁹⁰ (Fig. 5c). A synthetic genelet was designed to transcribe the RNA invader, causing the disassembly of tubular nanostructures⁹⁰. RNase H in the system hydrolyzes RNA thereby re-activating the tile and promoting the re-assembly of the DNA structures. Yet, RNA invader may be produced with any circuit, so the process of assembly and disassembly was made completely autonomous by adopting a synthetic genelet oscillator (Section 3). The oscillator was accompanied by an insulator circuit to couple modularly the circuit and the assembling tiles. This complex system produced two cycles of nanotube assembly and disassembly, but loss of enzyme activity and side reactions pose major

challenges toward more sustained operation (Fig. 5d). Recently, a similar strategy based on the use of RNase H was also employed to achieve spontaneous reconfiguration of DNA-based polymers.⁹¹ These examples highlight how transient assembly of DNA nanostructures can be achieved by using enzymes and external circuits that may impart a variety of dynamic behaviors to the downstream assemblies.

Dissipative control of assembly/disassembly of DNA nanostructures can also be achieved through non-enzymatic chemical reactions. To do this, Ricci, Prins and coworkers⁹² employed the same DNA tiles self-assembling into tubular structures described in the example above⁹⁰ and designed DNA activators or inhibitors split into two halves and joined together by a disulfide bond. Such disulfide controllers used in a reducing environment can lead to a transient self-assembly (activator) or disassembly (inhibitor) controlled by the reduction of the disulfide bond that inactivates the controller's function (Fig. 5e-f). Moreover, by varying the concentration of the reducing agent (i.e. TCEP) it is possible to control the associated lifetime of the transient behaviour.

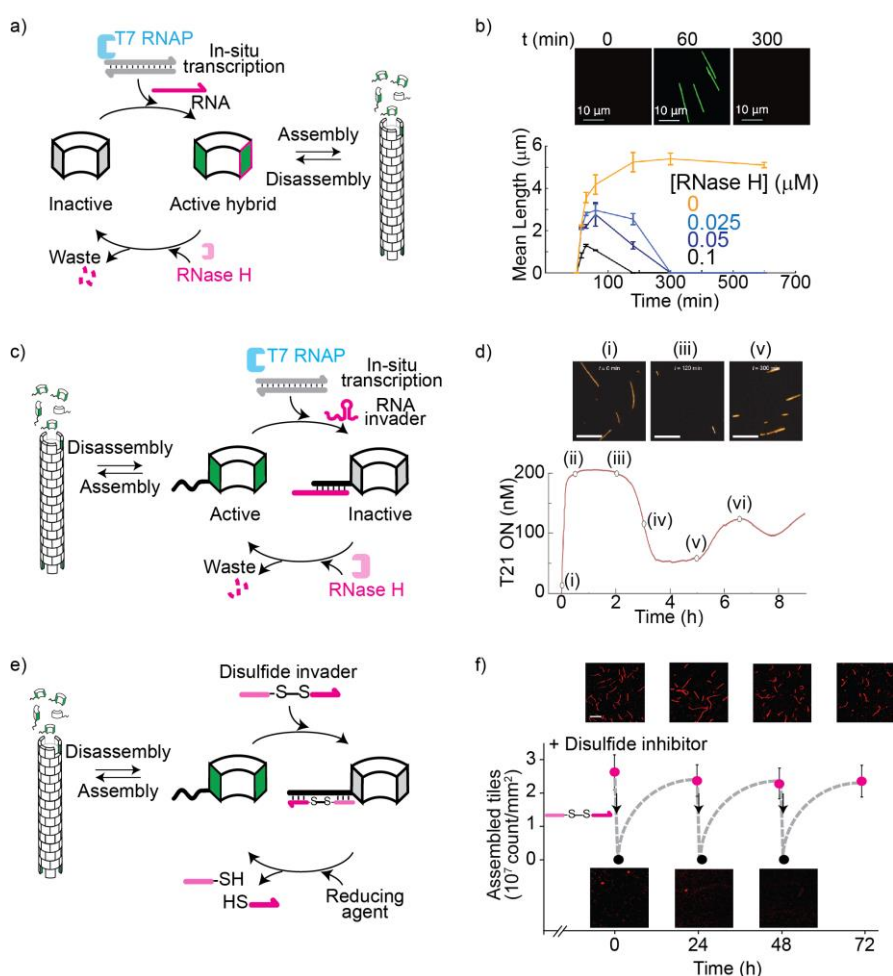


Fig. 5| Dissipative DNA-based structures. (a-b) Transcriptional control of dynamic assembly and disassembly of DNA micron-scale structures. (a) DNA nanotubes assemble from tiles made of short DNA strands⁸⁸. In Agarwal & Franco, a hybrid DNA-RNA tile was designed for activation via RNA transcribed by an external genetic circuit⁸⁹, inducing the self-assembly of nanotubes. The RNA strand bound to DNA is hydrolyzed by RNase H, causing nanotubes to disassemble. (b) (Top) Microscope images at 0, 60 and 300 min show the transient nanotube growth that can be also controlled by varying the concentration of RNase H, in the presence of a fixed concentration of RNA polymerase. (Bottom) Kinetic traces showing the transient increase of the nanotube length. Different concentrations of RNase H induce different kinetics of the disassembly process. (c) DNA tiles were engineered by Green et al. to include a binding site (black toehold) allowing for invasion of inter-tile bonds by an RNA or DNA molecule⁹⁰. In the absence of invader, tiles self-assemble and form nanotubes. In the presence of invader, tiles dissociate and the tubes disassemble. If the invader is an RNA strand, it is hydrolysed by RNase H, enabling re-assembly of the tubes. With this idea, RNA outputs of transcriptional synthetic circuits such as the oscillator described earlier (Fig. 3c) can be used to direct assembly and disassembly of nanotubes. (d) (Top) Microscope images show the transient disassembly of DNA nanotubes. (Bottom) Fluorescence trace reporting the fraction of active genelet able to control the nanotube assembly. (e) Dissipative redox-control over the disassembly of DNA-based nanostructures achieved by designing a disulfide invader strand (pink) that induces disassembly in the oxidized form but spontaneously de-hybridize from the tiles, allowing their consequent re-assembly, upon reduction. (f) Microscope images and number of assembled tiles (count/mm²) measured immediately after the addition of the disulfide invader (black dots) and after 24 hours (pink dots). The reversibility is demonstrated by cyclic additions of the disulfide invader⁹².

Dissipative DNA polymer systems fuelled by ATP

Many DNA-recognizing enzymes employ ATP as their cofactors. This feature has been employed by Walther and co-workers to achieve dissipative behaviour in different DNA-based systems using ATP as the fuel^{93,94}. In one example short ds segments bearing single stranded (ss) sticky ends on each side can be ligated by ATP-dependent T4 DNA ligase and make long DNA polymers⁹⁵ (Fig. 6a). The ligated segments form a domain recognized by the restriction enzyme BamHI, that induces fragmentation of the polymer. Immediately after the addition of ATP, the DNA polymer grows because ligation is the predominant reaction. Once the ATP level becomes limiting and the ligase activity declines, the restriction enzyme activity becomes prevalent and the DNA polymers become shorter. As a result, the concurrent action of the two enzymes makes it possible to obtain transient formation of ds DNA polymers. The transient lifetime of the DNA polymer can be controlled by modulating the concentration of ATP. For example, by varying the concentration of ATP from 0.1 to 1.0 mM, the polymer lifetime can be extended from few minutes to 10 days (Fig. 6b). It was also possible to control the speed of the transient formation of polymers by changing the enzyme concentration: by increasing the T4 DNA ligase/BamHI ratio, for example, faster kinetics for the dynamic elongation during the growth phase could be achieved.

By using photolyzable caged ATP derivative, Walther and co-workers demonstrated that fuel availability can be regulated through light, making it possible to control transient polymerization by changing light intensity and illumination time⁹⁶. Similar ATP-driven non-equilibrium reaction networks were also employed by Walther and coworkers to build self-resetting strand displacement systems⁴⁸, DNA-coacervates with programmable life-time⁹⁷ (Fig. 6c), DNA oligomers with transient catalytic functions⁹⁸ and autonomous DNA-based nanostructures⁹⁹. Higher level of complexity was also recently demonstrated by Walther's research group designing dissipative hierarchical multicomponent systems¹⁰⁰.

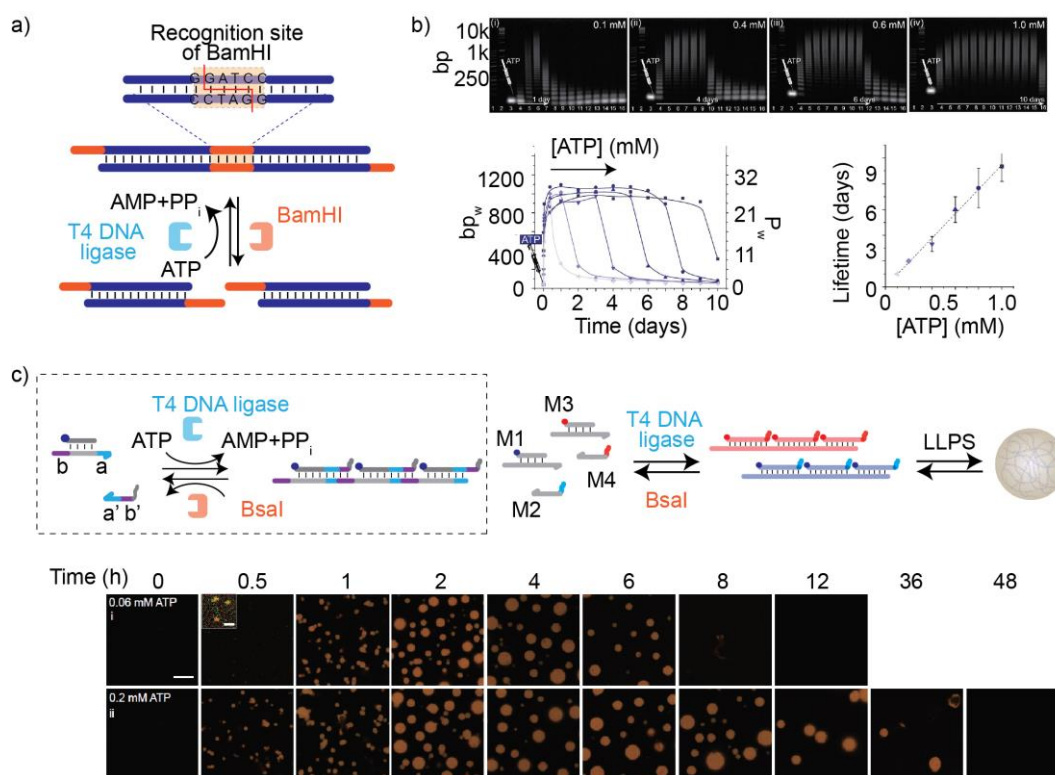


Fig. 6| ATP-fueled activation and dynamization of a covalent and transient ds-DNA-based chain growth. (a) The system is based on a rigid duplex with single-stranded DNA portions at both sides allowing hybridization and ds-DNA chain growth. The transient polymerization and the consequent DNA-based chain growth is triggered with an enzymatic reaction network constituted of two enzymes (T4 DNA ligase and BamHI) able to work simultaneously. (b) Gel electrophoresis show the modulation of the transient lifetime of the chain growth obtained by varying the concentration of ATP (0.1, 0.4, 0.6 and 1 mM) that controls the activity of T4 DNA ligase. Kinetic traces obtained by gel-electrophoresis experiments showing how the transient lifetime of chain length (bp_w) changes with different concentrations of ATP. The lifetime of the ds-DNA chain shows a linear correlation with ATP concentration. (c) (Top, left) Schematic representation of ATP-driven non-equilibrium reaction networks of concurrent ligase action (using T4 DNA ligase) and endonuclease-restriction action (using Bsal) employed to build sequence-defined functionalized DNA-polymers. (Top, right) Illustration of ATP-driven generation of DNA-coacervates with programmable lifetime, which form through LLPS (liquid-liquid phase separation) of transient orthogonal sequence-defined functionalized DNA-polymers. (bottom) Confocal laser scanning microscopy images at two different concentrations of ATP (0.06 and 0.2 mM). The DNA-coacervates show a longer transient lifetime at higher concentration of ATP (0.2 mM).

Perspective

The implementation of dissipative processes in DNA-based systems is rapidly gaining traction¹⁰¹⁻¹⁰³ and the examples highlighted in this Review illustrate the potential for introducing new modes of operation that are a step closer to those exploited by nature. When compared to other biomaterials and abiotic materials¹⁰⁴⁻¹⁰⁶ nucleic acids present unique advantages for designing dissipative systems. First, the high programmability and predictability of DNA/RNA interactions provides a very precise control over the ground states in the free energy landscape as well as control over reaction kinetics (for example the toehold-exchange reaction). Second, the availability of a wide family of enzymes that can cleave DNA or RNA sequences with very high selectivity provides exquisite control over the energy dissipating process, which is hard to achieve in abiotic systems. Third, DNA-based dissipative systems are generally more tolerant to waste products when compared to most synthetic dissipative systems, because of the multivalent nature of DNA-hybridization. Fourth, polymerization and transcription are well-understood reactions that can be easily harnessed to control the production of RNA or DNA strands serving as fuel molecules. Fifth, all the components of these systems are biocompatible, making them relevant to *in vivo* applications. These advantages indicate that DNA-based systems are poised to play a dominant role in the field of non-equilibrium chemistry. In this section we outline additional practical and conceptual steps that are required to make progress toward building synthetic life-like systems.

Open systems. The vast majority of examples of dissipative DNA nanotechnology rely on the batch-wise addition of fuel to trigger activation in a closed system. To match nature's capacity to sustain processes for long periods of time, synthetic DNA dissipative systems need to be engineered to manage fuel intake and waste elimination. This could be addressed, for example, through microfluidic methods generating artificial vasculature^{39,107} or via compartmentalization in vesicles or droplets with selective nanopores, or in semi-permeable hydrogels^{108,109}. Alternatively, new ways to control non-equilibrium DNA systems with abiotic fuels (similar to the disulfide/thiol reactions or pH oscillators described in this Review) could further improve the tolerance against waste products and avoid loss of activity as a result of enzyme degradation. These abiotic reactions may also provide better control over the kinetics and increase the stability of the system under non-physiological conditions.

Non-equilibrium operation of molecular devices. The most intriguing feature of life is its non-equilibrium nature. An entropically disfavored high-level of organization is maintained at the expense of energy. Examples of non-equilibrium operations are the directional motion of motor proteins and the uphill transport of species against a concentration gradient. A fundamental step forward towards life-like DNA-systems will rely on the ability to install non-equilibrium conditions. In the majority of examples discussed in this Review, non-equilibrium conditions are installed in a trivial way: the addition of a batch of fuel transiently alters the energy landscape of the systems components, which is maintained until all fuel is converted to waste. Although the future development of open systems will allow the fuel-induced energy landscape to be maintained indefinitely, it is unlikely that this will bring us conceptually closer to the desired 'life-like' properties. Most reported dissipative DNA systems rely on the transient shuttling between two states (open-closed; unassembled-assembled), which by themselves are thermodynamically stable states that can also exist in the absence of energy dissipation. This implies that at constant fuel concentration such a system will reside in a thermodynamically stable state; fuel consumption brings no additional benefit apart from the possibility to turn off the system - and its functional properties - by stopping the injection of fuel.

Recent analyses of the physical-chemical origins of the functioning of molecular motors and pumps have revealed that the persistence of a non-equilibrium steady state at constant fuel concentrations requires the presence of kinetic asymmetry in the energy consumption pathways^{25,110-112}. This implies the presence in the system of a kinetically preferred pathway along which the chemical energy of the fuel is consumed. For example, kinesin moves preferentially towards the (+)-end of microtubules because fuel conversion (ATP into ADP) is more efficient - *i.e.* occurs at a higher rate - when the motor protein moves in that direction.

Development of non-equilibrium DNA-based devices will require a higher level of design. It is not sufficient to just implement an energy-dissipating step in the system; the attention should rather be focused on designing the kinetic pathway along which energy is consumed. A successful implementation will give access to molecular DNA-based devices, such as walkers and motors, able to perform their non-equilibrium operation autonomously under stationary conditions.

'Active' materials. The transition towards 'active' matter, defined as material that can perform work, requires the design of systems that consume energy to create a spatial

displacement of target components. This means that the material should store at least part of the energy being consumed to reach an energetically activated state. Microtubules are the archetypal biological example of a chemically-fueled active material¹¹³. Microtubules are composed of tubulin dimers, which require complexation of GTP to be activated for self-assembly. In the assembled state, tubulin-GTP becomes catalytically active and converts GTP to GDP. This conversion is crucial, because the presence of tubulin-GDP dimers in the assembled state is energetically disfavored and causes a build-up of strain in the polymer lattice. Structural integrity is maintained if a GTP-cap is present, while microtubules rapidly collapse if the GTP-cap is lost. This sequence of events illustrates that the fuel-to-waste conversion is directly coupled to a self-assembly and disassembly process, and part of the chemical energy is stored in the polymer. Storage of energy in the structure enables active cycles of growth and shrinkage, that allow microtubules to carry out mechanical work by generating pushing and pulling forces and the fast search and capture of kinetochores during cell division²⁴.

The lesson that we can take from the microtubule example is that the design of 'active' DNA-based materials that can perform work should include an energy consumption pathway associated to the production of matter residing at a high-energy state (Fig. 7a)^{27,28,112}. Essential in such a design is the use of systems components that are not prone to structure formation and need interaction with a fuel, e.g. RNA, to be activated for (thermodynamically controlled) self-assembly. Fuel-to-waste conversion by the thermodynamically stable assembly (I) then leads to the population of a high-energy material (II), which is composed of native building blocks trapped into an energetically disfavored conformation until a stimulus is received that will allow the material to relax back to the stable state (I). The energy transfer from fuel to material can be illustrated by following the overall energy consumption pathway (Fig. 7b). Starting from the high energy level of building blocks and fuel, a cascade of energetically downhill steps leads to the formation of a high-energy material. The material finally releases the stored energy by relaxing to the unassembled state. If its release is regulated by chemical or physical triggers (GTP-concentration in the case of microtubules), the energy may be exploited for a functional purpose such as generating rapid push or pull forces.

Complexity. In dynamic DNA nanotechnology the use of fuel-gates (DNA constructs that process fuel strands to release secondary fuel strands as output for further downstream processing) has permitted the design of DNA circuitry including hundreds of strands to perform sophisticated operations. In comparison, the level of complexity in

dissipative DNA nanotechnology is far lower. The vast majority of systems exploit chemical fuels to transiently shift the system between two thermodynamically stable states. Small circuits are now emerging in which the addition of fuel leads to the release of DNA strands from fuel-gates for subsequent activation of secondary events¹¹⁴⁻¹¹⁵(Wang 2021). Yet, these circuits are operated through a single dissipative process and the cascades rely on the release of stable secondary DNA strands for downstream processing, which are not consumed by a dissipative process. An essential step forward towards systems that can rival the complexity of thermodynamically controlled DNA circuits, while maintaining the advances of system reactivation by refurbishing fuel, requires the exploitation of fuel-gates that contain 'dormant' fuels which, upon arrival of a trigger, are released for downstream processing and, at the same time, activated for conversion into waste.

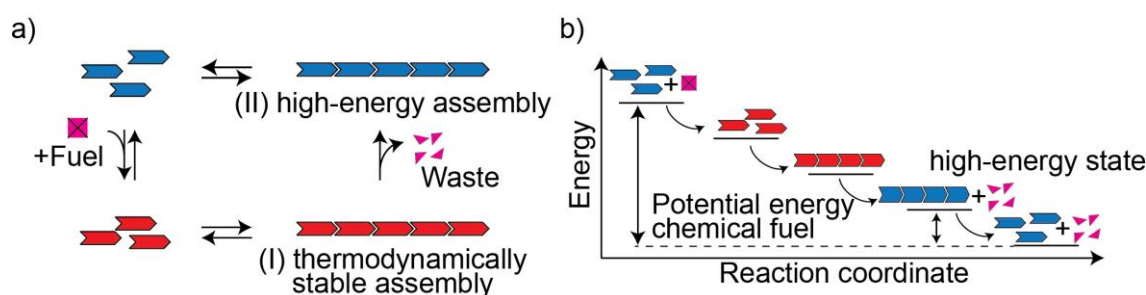


Fig. 7| A route toward the design of 'active' DNA materials based on the operation of microtubules. (a) Systems components (blue tiles) need interaction with a fuel molecule to start the assembly of a thermodynamically stable structure (I). Fuel-to-waste conversion of the fuel thus turns the stable assembly into into a high-energy material (II). (b) Energy transfer from fuel to material illustrated by the energy consumption pathway.

Conclusions

DNA nanotechnology offers a repertoire of tools to create synthetic devices and materials with the complexity and sophistication of living matter. Research in this direction is rapidly expanding, by taking advantage of the programmability of nucleic acid interactions, of the ease of conjugation of different responsive molecules on nucleic acid scaffolds, and of the wide choice of sequence-specific DNA-binding enzymes that can operate *in vitro*. Within the framework of dynamic DNA nanotechnology many systems take advantage of synthetic DNA to build large reaction networks relying on the design of thermodynamic states and of the kinetic pathways leading to them. Although these systems may display a very complex dynamic behavior, the overall temporal evolution of the system is determined by an irreversible progress towards a final thermodynamically stable state. This marks a stark contrast with nature, in which complex machines, structures and reaction networks are maintained in a non-equilibrium state at the expense of the consumption of chemical energy. In this Review we have discussed dissipative DNA nanotechnology as an approach to develop artificial nucleic acid-based systems that require chemical fuel for activation.

Dissipative DNA nanotechnology marks a transition from functional systems governed by thermodynamics towards systems that rely on the availability of energy for functional activation. This allows the development of “life-like” matter that is activated only when energy is spatiotemporally provided. On the horizon, we envision the development of “intelligent” matter that can autonomously move, respond and act in response to stimuli provided by the environment. Systems will emerge of which the functional efficiency is no longer determined by thermodynamic or kinetic stability, but by the efficacy at which such systems are able to exploit available energy. We can also see the emergence of complex DNA-based circuitry that have the potential to compute a large variety of complex operations the activation of which depends on the type of fuels that have been added.

References

1. Seeman, N. C. & Sleiman, H. F. DNA nanotechnology. *Nat. Rev. Mater.* **3**, 17068 (2017).
2. Harroun, S.G., Prévost-Tremblay, C., Lauzon, D., Desrosiers, A., Wang, X., Pedro, L. & Vallée-Bélisle, A. Programmable DNA switches and their applications. *Nanoscale*, **10**, 4607-4641 (2018).
3. Simmel, F. C., Yurke, B. & Singh, H. R. Principles and Applications of Nucleic Acid Strand Displacement Reactions. *Chem. Rev.* **119**, 6326–6369 (2019).
4. Ye, D., Zuo, X. & Fan, C. DNA nanotechnology-enabled interfacial engineering for biosensor development. *Annu. Rev. Anal. Chem.* **11**, 171-195 (2018).
5. Li, J., Green, A. A., Yan, H. & Fan, C. Engineering nucleic acid structures for programmable molecular circuitry and intracellular biocomputation. *Nat. Chem.* **9**, 1056–1067 (2017).
6. Shin, J. –S. & Pierce, N. A. A synthetic DNA walker for molecular transport. *J. Am. Chem. Soc.* **126**, 10834–10835 (2004).
7. Hu, Q., Li, H., Wang, L., Gu, H. & Fan, C. DNA Nanotechnology-Enabled Drug Delivery Systems. *Chem. Rev.* **119**, 6459-6506 (2019).
8. Kim, T., Nam, K., Kim Y. M., Yang, K. & Roh, Y. H. DNA-Assisted Smart Nanocarriers: Progress, Challenges, and Opportunities. *ACS Nano.* **15**, 1942-1951 (2021).
9. Wang, F., Lu, C. –H. & Willner, I. From cascaded catalytic nucleic acids to enzyme-DNA nanostructures: controlling reactivity, sensing, logic operations, and assembly of complex structures. *Chem. Rev.* **114**, 2881-941 (2014).
10. Göpfrich, K., Platzman, I. & Spatz, J. P. Mastering Complexity: Towards Bottom-up Construction of Multifunctional Eukaryotic Synthetic Cells. *Trends Biotechnol.* **36**, 938-951 (2018).
11. Zhang, D. Y. & Seelig, G. Dynamic DNA nanotechnology using strand-displacement reactions. *Nat. Chem.* **3**, 103–113 (2011).
12. Walsh, C. T., Tu, B. P. & Tang, Y. Eight Kinetically Stable but Thermodynamically Activated Molecules that Power Cell Metabolism. *Chem. Rev.* **118**, 1460–1494 (2018).
13. Astumian, R. D. Thermodynamics and kinetics of molecular motors. *Biophys. J.* **98**, 2401-2409 (2010).
14. Ananthakrishnan, R. & Ehrlicher, A. The forces behind cell movement. *Int. J. Biol. Sci.* **3**, 303-317 (2007).
15. Schliwa, M. & Woehlke, G. Molecular motors. *Nature.* **422**, 759-765 (2003).
16. Zhang, D. Y. & Winfree, E. Control of DNA strand displacement kinetics using toehold exchange. *J. Am. Chem. Soc.* **131**, 17303–17314 (2009).
17. Seelig, G., Soloveichik, D., Zhang, D. Y. & Winfree, E. Enzyme-free nucleic acid logic circuits. *Science.* **314**, 1585–1588 (2006)
18. Zhang, D. Y., Hariadi, R. F., Choi, H. M. T. & Winfree, E. Integrating DNA strand-displacement circuitry with DNA tile self-assembly. *Nat. Commun.* **4**, 1965 (2013).

19. Green, L. N., Amodio, A., Subramanian, H. K. K. S., Ricci, F. & Franco, E. pH-driven reversible self-assembly of micron-scale DNA scaffolds. *Nano Lett.* **17**, 7283–7288 (2017).
20. Amodio, A., Del Grosso, E., Troina, A., Placidi, E. & Ricci, F. Remote electronic control of DNA-based reactions and nanostructures assembly. *Nano Lett.* **18**, 2918–2923 (2018).
21. Amodio, A., Adedeji, A. F., Castronovo, M., Franco, E. & Ricci, F. pH-controlled assembly of DNA tiles. *J. Am. Chem. Soc.* **138**, 12735–12738 (2016).
22. Ranallo, S., Sorrentino, D. & Ricci, F. Orthogonal regulation of DNA nanostructure self-assembly and disassembly using antibodies. *Nat. Commun.* **10**, 5509 (2019).
23. Yurke, B., Turberfield, A. J., Mills, A. P., Simmel, F. C. & Neumann, J. L. A DNA-fuelled Molecular Machine Made of DNA. *Nature.* **406**, 605–608 (2000).
24. Das, J., Gabrielli, L. & Prins, L. J. Chemically-fueled self-assembly in biology and chemistry. *Angew. Chem. Int. Ed. Engl.* doi: 10.1002/anie.202100274 (2021).
25. Aprahamian, I. The Future of Molecular Machines. *ACS Cent. Sci.* **6**, 347-358 (2020).
26. Astumian, R. D. How molecular motors work - insights from the molecular machinist's toolbox: the Nobel prize in Chemistry 2016. *Chem. Sci.* **8**, 840-845 (2017).
27. Ragazzon, G. & Prins, L. J. Energy consumption in chemical fuel-driven self-assembly. *Nat. Nanotechnol.* **13**, 882–889 (2018).
28. Astumian, R. D. Kinetic asymmetry allows macromolecular catalysts to drive an information ratchet. *Nat. Commun.* **10**, 3837 (2019).
29. Feng, Y. Ovalle, M., Seale, J. S. W., Lee, C. K., Kim, D. J., Astumian, R. D. & Stoddart, J. F. Molecular Pumps and Motors. *J. Am. Chem. Soc.* **143**, 5569-5591 (2021).
30. Novák, B. & Tyson, J. J. Design principles of biochemical oscillators. *Nat. Rev. Mol. Cell. Biol.* **9**, 981–991 (2008).
31. Elowitz, M. B. & Leibler, S. A synthetic oscillatory network of transcriptional regulators. *Nature.* **403**, 335–338 (2000).
32. Gardner, T. S., Cantor, C. R. & Collins, J. J. Construction of a genetic toggle switch in *Escherichia coli*. *Nature.* **403**, 339–342 (2000).
33. Kim, J., White, K. S. & Winfree, E. Construction of an in vitro bistable circuit from synthetic transcriptional switches. *Mol. Syst. Biol.* **2**, 68 (2006).
34. Kim, J. & Winfree, E. Synthetic in Vitro Transcriptional Oscillators. *Mol. Syst. Biol.* **7**, 465 (2011).
35. Subsoontorn, P., Kim, J. & Winfree, E. Bistability of an in vitro synthetic autoregulatory switch. <http://arxiv.org/abs/1101.0723>. (2011).
36. Schaffter, S. W. & Schulman, R. Building in vitro transcriptional regulatory networks by successively integrating multiple functional circuit modules. *Nat. Chem.* **11**, 829–838 (2019).
37. Franco, E., Friedrichs, E., Kim, J., Jungmann, R., Murray, R., Winfree, E. & Simmel, F. C. Timing Molecular Motion and Production With a Synthetic Transcriptional Clock. *Proc. Natl. Acad. Sci U S A.* **108**, E784-793 (2011).

38. Weitz, M., Kim, J., Kapsner, K., Winfree, E., Franco, E. & Simmel, F. C. Diversity in the dynamical behaviour of a compartmentalized programmable biochemical oscillator. *Nat. Chem.* **6**, 295–302 (2014).
39. Dupin, A. & Simmel, F. C. Signalling and differentiation in emulsion-based multi-compartmentalized in vitro gene circuits. *Nat. Chem.* **11**, 32–39 (2019).
40. Padirac, A., Fujii, T. & Rondelez, Y. Bottom-up construction of in vitro switchable memories. *Proc. Natl. Acad. Sci. U S A.* **109**, E3212–E3220 (2012).
41. Montagne, K., Plasson, R., Sakai, Y., Fujii, T. & Rondelez, Y. Programming an in vitro DNA oscillator using a molecular networking strategy. *Mol. Syst. Biol.* **7**, 466 (2011).
42. Fujii, T. & Rondelez, Y. Predator-prey molecular ecosystems. *ACS Nano.* **7**, 27–34 (2013).
43. Lotka, A. Undamped Oscillations Derived from the Law of Mass Action. *J. Am. Chem. Soc.* **42**, 1595–1599 (1920).
44. Volterra, V. Fluctuations in the Abundance of a Species Considered Mathematically. *Nature.* **118**, 558–560 (1926).
45. Zadorin, A. S., Rondelez, Y., Gines, G., Dilhas, V., Urtel, G., Zambrano, A., Galas, J. –C. & Estevez-Torres, A. Synthesis and materialization of a reaction-diffusion French flag pattern. *Nat. Chem.* **9**, 990–996 (2017).
46. Gines, G., Zadorin, A. S., Galas, J. –C., Fujii, T., Estevez-Torres, A. & Rondelez, Y. Microscopic agents programmed by DNA circuits. *Nat. Nanotechnol.* **12**, 351–359 (2017).
47. Der Hofstadt, M. V., Galas, J. –C. & Estevez-Torres, A. Spatiotemporal Patterning of Living Cells with Extracellular DNA Programs. *ACS Nano.* **15**, 1741–1752 (2021).
48. Deng, J. & Walther, A. Fuel-Driven Transient DNA Strand Displacement Circuitry with Self-Resetting Function. *J. Am. Chem. Soc.* **142**, 21102–21109 (2020).
49. Wang, S., Yue, L., Wulf, V., Lilienthal, S. & Willner, I. Dissipative Constitutional Dynamic Networks for Tunable Transient Responses and Catalytic Functions. *J. Am. Chem. Soc.* **142**, 17480–17488 (2020).
50. Zhou, Z., Ouyang, Y., Wang, J. Willner, I. Dissipative Gated and Cascaded DNA Networks. *J. Am. Chem. Soc.* **143**, 5071–5079 (2021).
51. Srinivas, N., Parkin, J., Seelig, G., Winfree, E. & Soloveichik, D. Enzyme-free nucleic acid dynamical systems. *Science.* **358**, eaal2052 (2017).
52. Hirokawa, N. & Noda, Y. Intracellular transport and kinesin superfamily proteins, KIFs: structure, function, and dynamics. *Physiol. Rev.* **88**, 1089–1118 (2008).
53. Gennerich, A. & Vale, R. D. Walking the walk: how kinesin and dynein coordinate their steps. *Curr. Opin. Cell. Biol.* **21**, 59–67 (2009).
54. Bath, J., Green, S., Allen, K. & Turberfield, A. Mechanism for a directional, processive, and reversible dna motor. *Small.* **5**, 1513–1516 (2009).
55. Sherman, W. B. & Seeman, N. C. A Precisely Controlled DNA Biped Walking Device. *Nano Letters.* **4**, 1204–1207 (2004).
56. Yin, P., Choi, H. M. T., Calvert, C. R. & Pierce, N. A. Programming biomolecular self-assembly pathways. *Nature.* **451**, 318–322 (2008).
57. Omabegho, T., Sha, R. & Seeman, N. C. A bipedal DNA Brownian motor with coordinated legs. *Science.* **324**, 67–71 (2009).

58. Muscat, R. A., Bath, J. & Turberfield, A. J. A programmable molecular robot. *Nano Lett.* **11**, 982–987 (2011).
59. Thubagere, A. J., Li, W., Johnson, R. F., Chen, Z., Doroudi, S., Lee, Y. L., Izatt, G., Wittman, S., Srinivas, N., Woods, D., Winfree, E. & Qian, L. A cargo-sorting DNA robot. *Science.* **357**, eaan6558 (2017).
60. Green, S. J., Bath, J. & Turberfield, A. J. Coordinated chemomechanical cycles: a mechanism for autonomous molecular motion. *Phys. Rev. Lett.* **101**, 238101 (2008).
61. Yin, P., Yan, H., Daniell, X. G., Turberfield, A. J. & Reif, J. H. A unidirectional DNA walker that moves autonomously along a track. *Angew. Chem. Int. Ed.* **43**, 4906–4911 (2004).
62. Bath, J., Green, S. J. & Turberfield, A. J. A free-running DNA motor powered by a nicking enzyme. *Angew. Chem. Int. Ed.* **44**, 4358–4361 (2005).
63. Lund, K., Manzo, A. K., Dabby, N., Michelotti, N., Johnson-Buck, A., Nangreave, J., Taylor, S., Pei, R., Stojanovic, M. N., Walter, N. G., Winfree, E. & Yan, H. Molecular robots guided by prescriptive landscapes. *Nature.* **465**, 206–210 (2010).
64. Wickham, S. F. J., Endo, M., Katsuda, Y., Hidaka, K., Bath, J., Sugiyama, H. & Turberfield, A. J. Direct observation of stepwise movement of a synthetic molecular transporter. *Nat. Nanotechnol.* **6**, 166–169 (2011).
65. Wickham, S. F. J., Bath, J., Katsuda, Y., Endo, M., Hidaka, K., Sugiyama, H. & Turberfield, A. J. A DNA-based molecular motor that can navigate a network of tracks. *Nat. Nanotechnol.* **7**, 169–173 (2012).
66. Tian, Y., He, Y., Chen, Y., Yin, P. & Mao, C. A DNAzyme that walks processively and autonomously along a one-dimensional track. *Angew. Chem. Int. Ed.* **44**, 4355–4358 (2005).
67. Vallée-Bélisle, A., Ricci, F. & Plaxco, K. W. Thermodynamic basis for the optimization of binding-induced biomolecular switches and structure-switching biosensors. *Proc. Natl. Acad. Sci. U S A.* **106**, 13802–13807 (2009).
68. Chen, Y., Wang, M. & Mao, C. An autonomous DNA nanomotor powered by a DNA enzyme. *Angew. Chem. Int. Ed.* **43**, 3554–3557 (2004).
69. Safdar, S., Lammertyn, J. & Spasic, D. RNA-Cleaving NAzymes: The Next Big Thing in Biosensing? *Trends Biotechnol.* **38**, 1343-1359 (2020).
70. Bishop, J. D. & Klavins, E. An improved autonomous DNA nanomotor. *Nano Lett.* **7**, 2574–2577 (2007).
71. Porchetta, A., Idili, A., Vallée-Bélisle, A. & Ricci, F. A general strategy to introduce pH-induced allostery in DNA-based receptors to achieve controlled release of ligands. *Nano Lett.* **15**, 4467–4471 (2015).
72. Del Grosso, E., Amodio, A., Ragazzon, G., Prins, L. & Ricci, F. Dissipative synthetic DNA-based receptors for the transient load and release of molecular cargo. *Angew. Chem. Int. Ed.* **57**, 10489–10493 (2018).
73. Idili, A., Plaxco, K. W., Vallée-Bélisle, A. & Ricci, F. Thermodynamic Basis for Engineering High-Affinity, High-Specificity Binding-Induced DNA Clamp Nanoswitches. *ACS Nano.* **7**, 10863–10869 (2013).
74. Rangel, A. E., Hariri, A. A., Eisenstein, M. & Soh, H. T. Engineering Aptamer Switches for Multifunctional Stimulus-Responsive Nanosystems. *Adv. Mater.* **32**, e2003704 (2020).

75. Del Grosso, E., Ragazzon, G., Prins, L. & Ricci, F. Fuel-responsive allosteric DNA-based aptamers for the transient release of ATP and cocaine. *Angew. Chem. Int. Ed.* **58**, 5582–5586 (2019).
76. Liedl, T. & Simmel, F. C. Switching the conformation of a DNA molecule with a chemical oscillator. *Nano Lett.* **5**, 1894–1898 (2005).
77. Gehring, K., Leroy, J. L. & Guéron, M. A tetrameric DNA structure with protonated cytosine-cytosine base pairs. *Nature.* **363**, 561–565 (1993).
78. Liu, D. & Balasubramanian, S. A proton-fuelled DNA nanomachine. *Angew. Chem. Int. Ed.* **42**, 5734–5736 (2003).
79. Heinen, L. & Walther, A. Temporal control of i-motif switch lifetimes for autonomous operation of transient DNA nanostructures. *Chem. Sci.*, **8**, 4100–4107 (2017).
80. Mariottini, D., Del Giudice, D., Ercolani, G., Di Stefano, S. & Ricci, F. Dissipative operation of pH-responsive DNA-based nanodevices. *Chem. Science*, **12**, 11735–11739 (2021).
81. Heinen, L., Heuser, T., Steinschulte, A. & Walther, A. Antagonistic Enzymes in a Biocatalytic pH Feedback System Program Autonomous DNA Hydrogel Life Cycles. *Nano Lett.* **17**, 4989–4995 (2017).
82. Del Grosso, E., Ponzio, I., Ragazzon, G., Prins, L. J. & Ricci, F. Disulfide-Linked Allosteric Modulators for Multi-cycle Kinetic Control of DNA-Based Nanodevices. *Angew. Chem. Int. Ed. Engl.* **59**, 21058–21063 (2020).
83. Rothmund, P. W. K. Folding DNA to create nanoscale shapes and patterns. *Nature.* **440**, 297–302 (2006).
84. Douglas, S. M., Dietz, H., Liedl, T., Högberg, B., Graf, B. & Shih, W. M. Self-assembly of DNA into nanoscale three-dimensional shapes. *Nature.* **459**, 414–418 (2009).
85. Ijäs, H., Nummelin, S., Shen, B., Kostianen, M. A. & Linko, V. Dynamic DNA Origami Devices: from Strand-Displacement Reactions to External-Stimuli Responsive Systems. *Int. J. Mol. Sci.* **19**, E2114 (2018).
86. Turek, V. A., Chikkaraddy, R., Cormier, S., Stockham, B., Ding, T., Keyser, U. F. & Baumberg, U. F. Thermo-Responsive Actuation of a DNA Origami Flexor. *Adv. Funct. Mater.* **28**, 1706410 (2018).
87. Gerling, T., Wagenbauer, K. F., Neuner, A. M. & Dietz, H. Dynamic DNA devices and assemblies formed by shape-complementary, non-base pairing 3D components. *Science.* **347**, 1446–1452 (2015).
88. Rothmund, P. W. K., Ekani-Nkodo, A., Papadakis, N., Kumar, A., Fygenson, D. K. & Winfree, E. Design and Characterization of Programmable DNA Nanotubes. *J. Am. Chem. Soc.* **126**, 16344–16352 (2004).
89. Agarwal, S. & Franco, E. Enzyme-Driven Assembly and Disassembly of Hybrid DNA-RNA Nanotubes. *J. Am. Chem. Soc.* **141**, 7831–7841 (2019).
90. Green, L. N., Subramanian, H. K. K, Mardanlou, V., Kim, J., Hariadi, R. F. & Franco, E. Autonomous dynamic control of DNA nanostructure self-assembly. *Nat. Chem.* **11**, 510–520 (2019).
91. Gentile, S., Del Grosso, E., Pungchai, P. E., Franco, E., Prins, L. J. & Ricci, F. Spontaneous Reorganization of DNA-Based Polymers in Higher Ordered Structures Fueled by RNA. *J. Am. Chem. Soc.* **143**, 20296–20301 (2021).

92. Del Grosso, E., Prins, L. J. & Ricci, F. Transient DNA-based nanostructures controlled by redox inputs. *Angew. Chem. Int. Ed. Engl.* **59**, 13238–13245 (2020).
93. Deng, J. & Walther, A. Pathway Complexity in Fuel-Driven DNA Nanostructures with Autonomous Reconfiguration of Multiple Dynamic Steady States. *J. Am. Chem. Soc.* **142**, 685-689 (2020).
94. Deng, J. & Walther, A. ATP-Responsive and ATP-Fueled Self-Assembling Systems and Materials. *Adv. Mater.* **32**, e2002629 (2020).
95. Heinen, L. & Walther, A. Programmable dynamic steady states in ATP-driven nonequilibrium DNA systems. *Sci. Adv.* **5**, eaaw0590 (2019).
96. Deng, J., Bezold, D., Jessen, H. J. & Walther A. Multiple Light Control Mechanisms in ATP-Fueled Non-equilibrium DNA Systems. *Angew. Chem. Int. Ed.* **59**, 12084–12092 (2020).
97. Deng, J. & Walther, A. Programmable ATP-Fueled DNA Coacervates by Transient Liquid-Liquid Phase Separation. *Chem.* **6**, 3329–3343 (2020).
98. Deng, J., Liu, W., Sun, M. & Walther, A. Dissipative Organization of DNA Oligomers for Transient Catalytic Function. *Angew. Chem. Int. Ed. Engl.* e202113477. doi: 10.1002/anie.202113477 (2022).
99. Deng, J., & Walther, A. Autonomous DNA nanostructures instructed by hierarchically concatenated chemical reaction networks. *Nat. Commun.* **12**, 5132 (2021).
100. Deng, J. & Walther, A. ATP-powered molecular recognition to engineer transient multivalency and self-sorting 4D hierarchical systems. *Nat. Commun.* **11**, 3658 (2020).
101. Rizzuto, F.J., Platnich, C.M., Luo, X., Shen, Y., Dore, M.D., Lachance-Brais, C., Guarné, A., Cosa, G., & Sleiman H.F. A dissipative pathway for the structural evolution of DNA fibres. *Nat. Chem.* **13**, 843-849 (2021).
102. Li, N., Zhao, Y., Liu, Y., Yin, Z., Liu, R., Zhang, L., Ma, L., Dai, Z., Zhou, D. & Su, X. Self-resetting molecular probes for nucleic acids detection enabled by fuel dissipative systems. *Nano Today* **41**, 101308 (2021).
103. Ouyang, Y., Zhang, P., Manis-Levy, H., Paltiel, Y. & Willner I. Transient Dissipative Optical Properties of Aggregated Au Nanoparticles, CdSe/ZnS Quantum Dots, and Supramolecular Nucleic Acid-Stabilized Ag Nanoclusters. *J. Am. Chem. Soc.*, **143**, 17622-17632 (2021).
104. Hamada, S., Yancey, K. G., Pardo, Y., Gan, M., Vanatta, M., An, D., Hu, Y., Derrien, T. L., Ruiz, R., Liu, P., Sabin, J. & Luo, D. Dynamic DNA material with emergent locomotion behavior powered by artificial metabolism. *Sci. Robot.* **4**, 3512 (2019).
105. Della Sala, F., Neri, S., Maiti, S., Chen, J. L. –Y. & Prins, L. J. Transient self-assembly of molecular nanostructures driven by chemical fuels. *Curr. Opin. Biotechnol.* **46**, 27-33 (2017).
106. Rieß, B., Grötsch, R. K. & Boekhoven, J. The Design of Dissipative Molecular Assemblies Driven by Chemical Reaction Cycles. *Chem.* **6**, 552–578 (2020).
107. Lavickova, B., Laohakunakorn, N. & Maerkl, S. J. A partially self-regenerating synthetic cell. *Nat. Commun.* **11**, 6340 (2020).

108. Zhang, Y., Chan, P. P. Y. & Herr, A. E. Rapid Capture and Release of Nucleic Acids through a Reversible Photo-Cycloaddition Reaction in a Psoralen-Functionalized Hydrogel. *Angew. Chem. Int. Ed.* **57**, 2357–2361 (2018).
109. Dorsey, P. J., Rubanov, M., Wang, W. & Schulman, R. Digital Maskless Photolithographic Patterning of DNA-Functionalized Poly(ethylene glycol) Diacrylate Hydrogels with Visible Light Enabling Photodirected Release of Oligonucleotides. *ACS Macro Lett.* **8**, 1133–1140 (2019).
110. Kay, E. R., Leigh, D. A. & Zerbetto, F. Synthetic molecular motors and mechanical machines. *Angew. Chem. Int. Ed. Engl.* **46**, 72-191 (2007).
111. Astumian, R. D. Microscopic reversibility as the organizing principle of molecular machines. *Nat. Nanotechnol.* **7**, 684-688 (2012).
112. Amano, S., Borsley, S., Leigh, D. A. & Sun, Z. Chemical engines: driving systems away from equilibrium through catalyst reaction cycles. *Nat. Nanotechnol.* **16**, 1057-1067 (2021).
113. Desai, A. & Mitchison, T. J. Microtubule polymerization dynamics. *Annu. Rev. Cell. Dev. Biol.* **13**, 83-117 (1997).
114. Wang, C., Zhou, Z., Ouyang, Y., Wang, J., Neumann, E., Nechushtai, R. & Willner, I. Gated Dissipative Dynamic Artificial Photosynthetic Model Systems. *J. Am. Chem. Soc.* **143**, 12120-12218 (2021).
115. Wang, J., Li, Z., Zhou, Z., Ouyang, Y., Zhang, J., Ma, X., Tian, H. & Willner, I. DNAzyme- and light-induced dissipative and gated DNA networks. *Chem. Sci.* **12**, 11204-11212 (2021).

Acknowledgements

F.R. thanks support from the European Research Council, ERC (Consolidator Grant project no. 819160) (F.R.) and Associazione Italiana per la Ricerca sul Cancro, AIRC (project no. 21965).

L.J.P. acknowledges the Italian Ministry of Education and Research (grant 2017E44A9P).

E.F. acknowledges financial support by the U.S. Department of Energy, Office of Science, Office of Basic Energy Sciences, under Award Number DE-SC-0010595.

Authors contributions

E.D.G., E.F., L.J.P., F.R. contributed to discussions and wrote the manuscript.