



Role of lung ultrasound for the etiological diagnosis of acute lower respiratory tract infection (ALRTI) in children: a prospective study

Danilo Buonsenso^{1,2,3} · Annamaria Musolino⁴ · Valentina Ferro⁴ · Cristina De Rose¹ · Rosa Morello¹ · Chiara Ventola¹ · Flora Marzia Liotti² · Rita De Sanctis¹ · Antonio Chiaretti¹ · Daniele Guerino Biasucci⁵ · Teresa Spanu^{2,6} · Maurizio Sanguinetti^{2,6} · Piero Valentini¹

Received: 6 April 2021 / Accepted: 29 May 2021 / Published online: 19 June 2021
© The Author(s) 2021

Abstract

Objective and design Our prospective study assesses the role of detailed lung ultrasound (LUS) features to discriminate the etiological diagnosis of acute lower respiratory tract infection (ALRTI) in children.

Methodology We analyzed patients aged from 1 month to 17 years admitted between March 2018 and April 2020 who were hospitalized for ALRTI. For all patients, history, clinical parameters, microbiological data, and lung ultrasound data were collected. Patients were stratified into three main groups (“bacterial”, “viral”, “atypical”) according to the presumed microbial etiology and LUS findings evaluated according to the etiological group. Nasopharyngeal swabs were obtained from all patients. A qualitative diagnostic test developed by Nurex S.r.l. was used for identification of bacterial and fungal DNA in respiratory samples. The Seegene Allplex™ Respiratory assays were used for the molecular diagnosis of viral respiratory pathogens. In addition, bacterial culture of blood and respiratory samples were performed, when indicated.

Results A total of 186 children with suspected ALRTI (44% female) with an average age of 6 were enrolled in the study. We found that some ultrasound findings as size, number and distribution of consolidations, the position and motion of air bronchograms, pleural effusions and distribution of vertical artifacts significantly differ ($p < 0.05$) in children with bacterial, viral and atypical ALRTI.

Conclusion Our study provides a detailed analysis of LUS features able to predict the ALRTI etiology in children. These findings may help the physicians to better manage a child with ALRTI and to offer personalized approach, from diagnosis to treatment and follow-up.

Keywords Lung ultrasound · Pneumonia · ALRTI · Etiological diagnosis · Children · Personalized medicine

✉ Danilo Buonsenso
danilobuonsenso@gmail.com

¹ Department of Woman and Child Health and Public Health, Fondazione Policlinico Universitario A. Gemelli, Largo A. Gemelli 8, 00168 Rome, Italy

² Dipartimento di Scienze Biotechnologiche di Base, Cliniche Intensivologiche e Perioperatorie, Università Cattolica del Sacro Cuore, Rome, Italy

³ Global Health Research Institute, Istituto di Igiene, Università Cattolica del Sacro Cuore, Roma, Italia

⁴ Department of Pediatric Emergency Medicine, Bambino Gesù Children’s Hospital, IRCCS, Rome, Italy

⁵ Department of Anesthesia and Intensive Care, Fondazione Policlinico Universitario “A. Gemelli”, Rome, Italy

⁶ Dipartimento di Scienze di Laboratorio e Infettivologiche, Fondazione Policlinico Universitario A. Gemelli IRCCS, Rome, Italy

Abbreviations

ALRTI(s)	Acute Lower Respiratory Tract Infection(s)
LRTI	Lower Respiratory Tract Infection(s)
CXR	Chest X-ray
LUS	Lung ultrasound
CRP	C-reactive protein
ED	Emergency Department
WCC	White cell count
PCT	Procalcitonin
CT	Computed tomography

Introduction

Acute lower respiratory tract infection (ALRTI) represents the single largest cause of pediatric morbidity and mortality worldwide [1, 2]. The diagnosis of pneumonia is

essentially based on medical history and clinical examination, which according to some studies has a poor sensitivity and specificity [3, 4]. However, it do not allow to identify the causative agent responsible for the infection [5].

Although viruses represent the most frequent cause of ALRTI, the majority of children with suspected or confirmed ALRTI are still treated with empirical and often unnecessary antibiotics [6], contributing to the spread of antibiotic resistance, one of the biggest medical emergencies of modern medicine. In the Centers for Disease Control and Prevention Etiology of Pneumonia in the Community cohort, only 15% of hospitalized children with radiographic pneumonia had a detectable bacterial etiology; however, 88% received antibiotics [7]. A recently published among Pakistani children younger than 5 years of age with pneumonia with tachypnea randomized at amoxicillin vs placebo, the number of children with pneumonia and tachypnea who would have needed to be treated with amoxicillin to prevent one treatment failure was 44, suggesting that a significant number of ALRTI is of viral origin and does not requires antibiotic [8].

However, current guidelines do not help the physician on how to approach to an optimized strategy for prevention, diagnosis and treatment of disease for each single child with ALRTI, based on his or her unique characteristics, but mainly suggest a general approach to pediatric ALRTI [9].

To date, according to some studies, both clinical findings [10] and laboratory results [10–16] could not entirely accurately distinguish viral, bacterial and atypical pneumonia. Furthermore, some studies, that report differences in laboratory biomarkers, could not determine reliable thresholds for differentiating bacterial pneumonia from viral pneumonia [13], since normal tests do not always exclude bacterial ALRTI [9].

Chest X-ray (CXR) is not necessary to confirm the diagnosis of ALRTI in milder cases, who are treated as outpatients and is also associated with risk of radiation exposure [17]. Moreover, CXR cannot reliably establish the microbial diagnosis of ALRTI [18–22] and the interpretation of radiographic images varies significantly among the observers [23].

In recent years, lung ultrasound (LUS) use has been widely studied as an alternative diagnostic tool for ALRTI of both bacterial and viral origin, proving to have high specificity and sensitivity for the diagnosis and as regards, the follow-up in children with pneumonia [21, 24–26]. Moreover, LUS has several advantages over X-ray, particularly useful for the pediatric population: radiation-free, lower cost, possibility of follow-up examinations, ability to monitor treatment, easy accessibility in all settings (including poor countries), fast, and can be used immediately as a point-of-care method. LUS results are immediately available to the

clinician, who must decide about the initial empirical treatment [19, 21–26].

The new challenge of LUS is to determine the etiology of ALRTI in the additional context of clinical and laboratory data. First studies primarily aimed to assess the role of LUS in ALRTI suggested that smaller consolidations may be associated with a viral etiology [27], but only one study prospectively assessed the role of LUS in defining the etiology of ALRTI [19]. However, although this study found that small subpleural consolidations and/or an increased number of B-lines (interstitial syndrome) are characteristics of viral pneumonia, the authors did not assessed important LUS features (such as the bronchograms, type and location of vertical artifacts, type of effusions).

Therefore, due to the growing role of LUS in the evaluation of patients with respiratory conditions and the limits of available data, we carried out this prospective study aiming to assess the role of LUS in supporting the etiological diagnosis of ALRTI in children.

Participants and methods

Study population

We prospectively analyzed patients aged from 1 month to 17 years admitted between March 2018 and April 2020 who were hospitalized for ALRTI and had pneumonic infiltrates detected with LUS. For all patients included in the study, history, clinical parameters, microbiological data, and ultrasound data were collected. The study was approved by the Ethics Committee of Fondazione Policlinic Universitario A. Gemelli IRCCS, Rome, Italy. Informed consent was obtained by all participants and/or their legal guardians (for children younger than 16 years). There is no identifying information or image in the article.

Patients

The evaluating physician made the clinical diagnosis of ALRTI in accordance with the British Thoracic Society guidelines [18]. Children with ALRTI may present with fever, tachypnea, breathlessness or difficulty in breathing, cough, wheeze or chest pain. They may also present with abdominal pain and/or vomiting and may have headache. These clinical features of pneumonia vary with the age of the child. In children older than 3 years, a history of difficulty breathing is an additional valuable symptom. A raised respiratory rate is associated with hypoxemia [18].

The recommendation of the guideline development group relevant to pneumonia is that chest radiography should not be considered a routine investigation in children thought to have ALRTI. Children with signs and symptoms of

pneumonia who are not admitted to hospital should not have a chest x-ray. Furthermore, according to the above guidelines, acute phase reactants are not of clinical utility in distinguishing viral from bacterial infections and should not routinely be tested and C-reactive Protein (CRP) is not useful in the management of uncomplicated pneumonia [18].

At the first evaluation in the Emergency Department (ED), all children with suspected ALRTI underwent medical history and clinical evaluation. Further investigations were performed only when deemed necessary from the evaluating pediatricians (anteroposterior CXR; blood tests including white cell count (WCC), C-reactive protein (CRP) and procalcitonin (PCT). The physician on duty-made decisions about the patient's diagnosis and treatment according to his/her own practice and without knowledge of the LUS findings, but aware of other clinical/laboratory/imaging data if performed. In our institution, the local protocol for ALRTI antibiotic treatment follows the Pediatric Infectious Diseases Society and the Infectious Diseases Society of America [9].

ALRTI definitions

We defined as ALRTI those patients requiring: acute respiratory signs and symptoms, fever > 37.5 °C, clinical or radiological evidence of a new pulmonary infiltrates.

Inclusion criteria

Children with a clinical diagnosis of ALRTI (based on history, clinical examination, blood tests (if performed), and CXR (if performed) who underwent LUS within six hours from the first clinical evaluation and with available clinical information about the outcome (including the etiological suspicion) available.

Exclusion criteria

Patients with underlying diseases, including respiratory tract anomalies, immunodeficiency, cerebral palsy, neuromuscular diseases, congenital heart disease, and malignancy were excluded.

Etiological stratifications of patients

Patients were stratified into different groups according to the presumed microbial etiology: patients with bacterial pneumonia, patients with viral pneumonia, and patients positive for atypical pneumonia, especially *Mycoplasma pneumoniae*. An expert in pediatric infectious diseases assessed the final database, blinded to the clinical discharge charts, and classified the etiological diagnosis according to the following data.

Bacterial pneumonia was considered in patients documented bacterial infection (either culture- or PCR-based methods) in clinically significant samples (bronchoalveolar lavage, pleural drainage, blood cultures), and/or lobar pneumonia on CXR (if performed), and/or leucocytosis ($> 15 \times 10^9/L$), and/or raised inflammatory markers (either CRP or PCT, according to clinical decision and local availability), even when viruses were detected in the nasopharyngeal swab. When no viruses or atypical bacteria were detected, the clinical opinion of the responsible pediatrician, based on clinical, laboratory and imaging studies, was considered enough for the stratification into the bacterial pneumonia group.

Patients with detected viral infection on nasopharyngeal were included into the viral pneumonia group only after the exclusion of bacterial superinfection, according to a comprehensive assessment of clinical, laboratory, radiology, and microbiological finding. Children were included into the atypical pneumonia group when *Mycoplasma pneumoniae* or *Chlamydia pneumoniae* were detected on nasopharyngeal swabs and bacterial superinfection was excluded, and clinical data were compatible with a diagnosis of atypical pneumonia.

Microbiological studies

Nasopharyngeal swabs were obtained and tested fresh from all patients. MicrobScan, a qualitative diagnostic test developed by Nurex S.r.l. (Sassari, Italy) was used for the detection and identification of bacterial and fungal DNA in respiratory samples. The target species panel includes *Bordetella pertussis*, *Bordetella parapertussis*, *Legionella pneumophila*, *Chlamydia pneumoniae*, *Mycoplasma pneumoniae*, and the fungus *Pneumocystis jirovecii*. The Seegene Allplex™ Respiratory Panel 1, 2, and 3 assays were used for the molecular diagnosis of viral respiratory pathogens. The organisms detected by the three panels include influenza virus A (subtypes H1, pdm09 and H3), influenza virus B, respiratory syncytial virus types A and B, adenovirus, metapneumovirus, human enterovirus, parainfluenza virus 1, parainfluenza virus 2, parainfluenza virus 3, parainfluenza virus. human bocavirus, coronavirus OC43, coronavirus 229E coronavirus, NL63 and human rhinovirus.

In addition, bacterial culture of blood and respiratory samples were performed, when indicated.

Lung ultrasound

LUS was performed with the ultrasound machine ESAOTE MyLab™ 40, which complies with the Medical Device Directive (MDD) 93/42/EEC and subsequent amendments. In accordance with this directive, Esaote has classified it as Class IIa devices. It was performed within 6 h from the

clinical diagnosis of ALRTI, unaware of microbiological, laboratory, and CXR (when performed) results.

Linear probe (12–6 MHz) was used in preschool children. In older children, we used a curved probe (8–5 MHz).

Images and clips were stored and archived. All LUS was made by the same physician that made the first one to reduce inter-operator differences.

The following LUS features were recorded (Fig. 1):

- Size of the main lesion, that we generally define as subpleural lung parenchymal lesion (consolidation and Atelectasis), if they are single or multiple and location (monolateral or bilateral)
- Presence of bronchograms, its characteristics (air or fluid), morphology (arboriform or dot-like/linear), position (deep if > 2 cm far from the pleura or superficial if close to the pleura), dynamicity during breath (fix, poorly dynamic, or clearly dynamic);

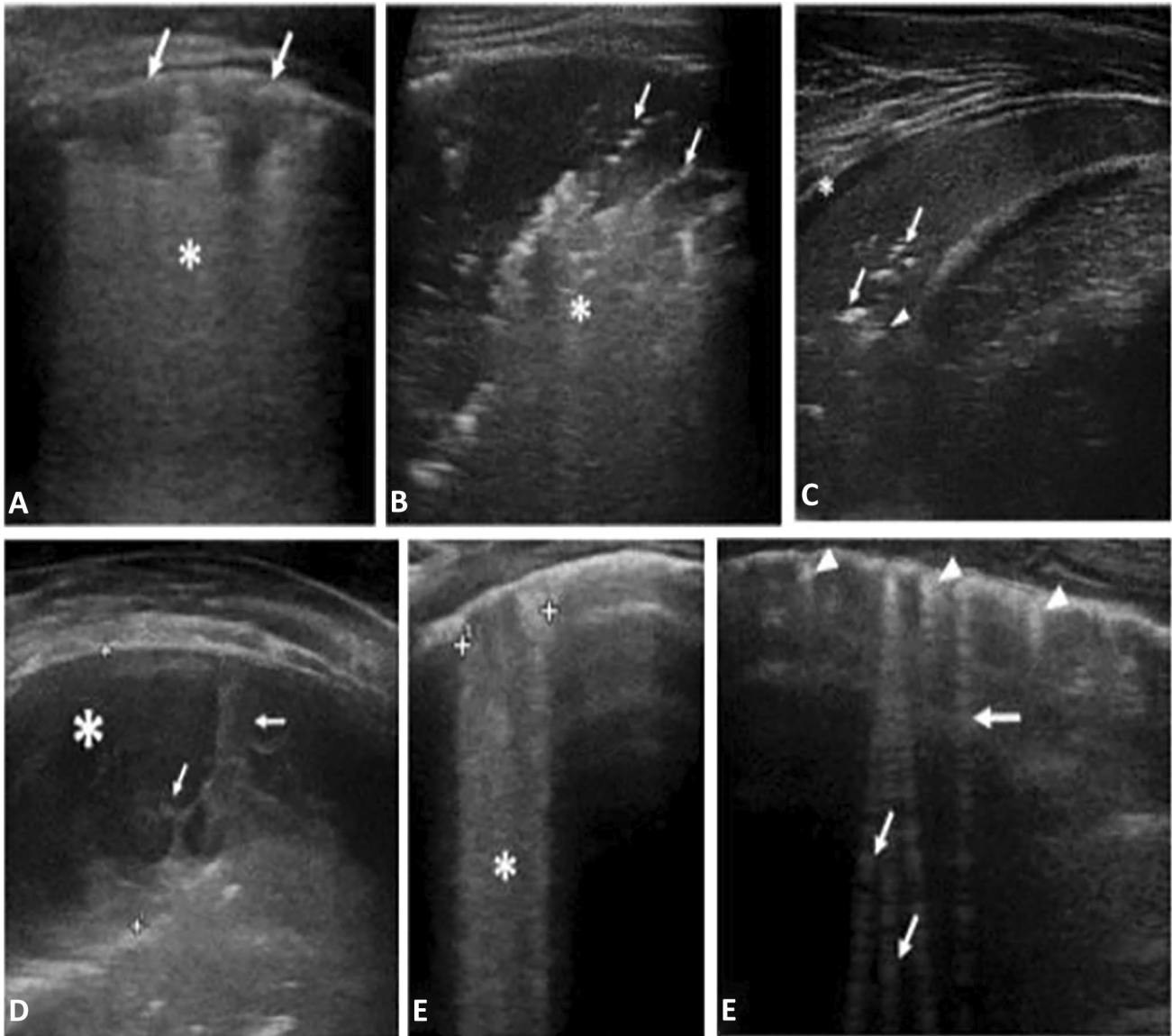


Fig. 1 **A.** Viral Pneumonia (H1N1): sub-centimeter subpleural consolidation (*arrows*) associated with vertical long perilesional vertical artifacts and areas of white lung (*asterisk*). **B** Atypical Pneumonia (*Mycoplasma pneumoniae*): Subpleural consolidation of less than 4 cm in size with dynamic superficial air bronchogram (*arrow*) and perilesional and deep confluent vertical artifacts (*asterisk*). **C.** BACTERIAL PNEUMONIA: Compact/hepatized large subpleural consol-

idation with static air bronchograms (*arrow*) and deep fluid bronchogram (*arrowhead*). Minimum reactive pleural effusion (*asterisk*). **D** Complex Pleural Effusion in a bacterial Pneumonia: complicated pleural effusion (*asterisk*) with multiple and concamerated fibrin (*arrow*). **E** Confluent long vertical artifacts (*asterisk*). **F** Isolated long vertical artifacts (*arrow*); short vertical artifacts (*arrowhead*)

- Presence of vertical artifacts or B lines, characteristics (short or long, spared or confluent), position (monolateral or bilateral, perilesional or not)
- Presence and type of pleural effusion: simple (anechoic and dependent to gravity) or complex (presence of septa, hyperechoic spot, following the lung through the apex and not dependent to gravity, requiring drainage).

The scans were made by investigating the anterior, lateral and posterior regions of the thorax and placing the probe transversally and longitudinally along the lines considered traditional ultrasound findings: the parasternal line, the axillary line and the paravertebral line so as to fully explore the chest wall according to a methodical scheme first described by Copetti et al. [24]. To investigate the anterior and lateral lung fields patients were positioned, according to age, in a seated or supine position. The posterior lung fields have been explored in lateral decubitus and in sitting position.

We compared the ultrasound results with the microbiological tests performed to verify the concordance of the etiological diagnosis, according to the three main groups “bacterial”, “viral”, “atypical”.

Treatment

We considered standard of care (SOC) the first line treatments (for either outpatient or inpatient) as per international guidelines [9] (amoxicillin, amoxicillin/clavulanate, ceftriaxone, cefotaxime, ampicillin, and penicillin).

Statistical analysis

To determine the power of the study, the study was set up as a study of agreement between lung ultrasound and the etiology of ALRTI. For atypical pneumonia, we considered a 60% agreement (then a 40% disagreement); for bacterial pneumonia, an agreement of 90% (disagreement 10%). To be conservative, we considered the highest percentage of disagreement that is 40%. In this case considering $\alpha = 0.01$ and $\beta = 0.20$, $n = 159$. A Statistical analysis was performed using the software STATA/IC 14.2 version 2017. We use the Skewness/Kurtosis test to verify the normality of the distribution. Continuous variables showed non-parametric distribution and were presented as median [interquartile range (IQR)]. Categorical variables were reported as frequency and percentage. Categorical variables were compared using chi-squared or Fisher’s exact test, as appropriate. Continuous variables were assessed using Mann–Whitney U test. We performed a multivariable logistic regression analysis to study the relationship between the etiological diagnosis of the ALRTI as the dependent variable and lung US such as lung consolidation, small subpleural consolidation, B

lines, confluent lines) as the independent variables. Inclusion of variables in the model was based on clinical plausibility and significant differences on χ^2 and Mann–Whitney U test. The model was adjusted for age, sex, clinical and laboratory characteristics. Variables with extremely unbalanced distribution in the two groups (frequency 0% in one groups) were excluded. We considered a two-tailed p value less than 0.05 to be significant. The dataset is available upon reasonable request. The interrater reliability for each variable was with the Cohen’s k coefficient. The concordance was considered absent for k values lower than 0, poor if between 0 and 0.4; discrete if between 0.4 and 0.6, good if k between 0.6 and 0.8; high if above 0.8

Results

Patients’ characteristics

A total of 186 children with suspected ALRTI (103 male and 83 female) with an average age of six were enrolled in the study (Fig. 2). The prevalent etiology of ALRTI was viral (40.86%), with a slight prevalence in male (55% of the cases). Main epidemiological and clinical characteristics of the study population, assessed according to the etiological group, are described in detail in Table 1. As reported, the majority of clinical parameters were not able to discriminate the different etiological groups.

Main diagnostic and laboratory investigations, assessed according to the etiological group, are described in detail in Table 2. Neither laboratory nor CXR findings were able to significantly discriminate the etiological groups since, also in case of statistical significance, the overlap between etiological groups was evident.

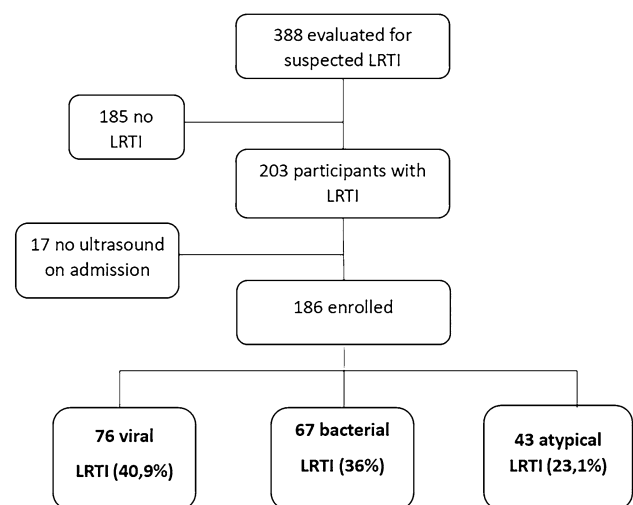


Fig. 2 Study flow

Table 1 Differences of the epidemiological and clinical features in community acquired pneumonia with three etiological causative agents

Epidemiological/clinical characteristics	Bacterial infection <i>n</i> = 67	Viral infection <i>n</i> = 76	Atypical infection <i>n</i> = 43	<i>P</i> value
Gender				
Female	27 (40.30)	34 (44.74)	22 (51.16)	B-V: 0.592
Male	40 (59.70)	42 (55.26)	21 (48.84)	V-A: 0.5 B-A:0.263
Age (years, median, SD)	4 (7)	2 (5.5)	7 (5)	B-V: 0.011 V-A: < 0.001 B-A: 0.002
Fever	56 (83.54)	61 (80.26)	32 (74.42)	B-V: 0.608 V-A:0.459 B-A: 0.241
Cough	40 (59.70)	51 (67.11)	37 (86.05)	B-V: 0.358 V-A: 0.024 B-A:0.003
Chest pain	10 (14.93)	4 (5.26)	4 (9.30)	B-V: 0.05 V-A:0.398 B-A:0.282
Respiratory distress	19 (28.79)	20 (26.67)	3 (6.98)	B-V: 0.779 V-A:0.007 B-A:0.004
Wheezing (at auscultation)	16 (25)	27 (36)	11 (25.54)	B-V:0.162 V-A:0.224 B-A:0.94
Crackles (at auscultation)	26 (40.63)	21 (28.38)	20 (46.51)	B-V: 0.130 V-A:0.047 B-A:0.546
Decreased air entry (at auscultation)	46 (71.88)	34 (45.95)	23 (53.49)	B-V: 0.002 V-A:0.431 B-A:0.05
Need oxygen (low flow)	19 (28.36)	21 (27.63)	3 (6.98)	B-V: 0.9 V-A:0.005 B-A: 0.005
Need oxygen (HNFC)	12 (17.21)	18 (23.68)	8 (18.60)	B-V: 0.4 V-A: 0.519 B-A:0.927
Need oxygen (CPAP)	4 (5.97)	4(5.96)	1 (2.33)	B-V: 0.85 V-A:0.403 B-A:0.348
Need intubation	8 (11.94)	2 (2.63)	0	B-V: 0.031 V-A:0.406 B-A: 0.016
Need intensive care	4(6.06)	1 (1.32)	0	B-V:0.142 V-A:0.639 B-A: 0.130
Complicated clinical course	26 (38.81)	6 (7.89)	1 (2.33)	B-V: < 0.001 V-A:0.207 B-A: < 0.001
Medical disposition hospitalization	64 (95.52)	65 (85.53)	32 (74.44)	B-V: 0.045 V-A:0.134 B-A:0.001
Length of hospitalization (days)	8 (12)	5 (4)	3 (5)	B-V: < 0.001 V-A: 0.0025 B-A: < 0.001
Length of therapy (days)	10 (10)	7 (5)	7 (5)	B-V < 0.001 V-B: 0.07 B-A: < 0.001

Table 2 Diagnostic/laboratory investigations

Diagnostic/laboratory investigations	Bacterial infection <i>n</i> = 67	Viral infection <i>n</i> = 76	Atypical infection <i>n</i> = 43	<i>p</i> value
Performed chest X-ray (CXR)	64(95.52)	63 (84)	33 (76.74)	B-V: 0.026 V-A:0.330 B-A:0.003
Consolidation (CXR)	58 (90.63)	49 (77.78)	27 (81.82)	B-V: 0.047 V-A: 0.643 B-A:0.212
Atelectasis (CXR)	12 (18.75)	12 (19.05)	3(9.09)	B-V: 0.9 V-A:0.164 B-A:0.172
Pleural effusion (CXR)	39 (60.94)	15 (23.81)	9 (27.27)	B-V: < 0.001 V-A:0.710 B-A:0.002
CRP < 50 mg/L	24 (40.68)	52 (85.25)	15 (65.22)	B-V: < 0.001 V-A: 0.042 B-A: 0.046
CRP 50–100 mg/L	12 (20.34)	3 (4.92)	3 (13.04)	B-V:0.01 V-A: 0.202 B-A:0.336
CRP > 100 mg/L	23 (38.98)	6 (9.84)	5 (21.74)	B-V: < 0.001 V-A:0.141 B-A:0.139
WBC count: < 10,000/ μ L	23 (41.07)	23 (42.59)	9 (37.50)	B-V:0.872 V-A: 0.673 B-A:0.766
WBC count: 10,000–15,000/ μ L	15 (26.79)	18 (33.33)	8 (33.33)	B-V:0.454 V-A:1 B-A:0.553
WBC count: > 15,000/ μ L	18 (32.14)	13 (24.07)	7 (29.17)	B-V: 0.347 V-A:0.635 B-A:0.792

LUS findings

Details about LUS features in children with bacterial, viral and atypical pneumonia are described in Table 3 and in Fig. 3 (Box Plot of Consolidation Size by Etiology). Consolidations were found in 100% of bacterial infections, with a significant statistical difference compared to viral infections (p value = 0.001) and to atypical infections (p value = 0.004). We analyzed the size of consolidation according to the etiological group:

- For consolidation < 1.5 cm, there is a statistical significance between bacterial and viral infections (p value = < 0.001) and between bacterial and atypical infections (p value = 0.004). They were more expressed in viral pneumonia (63.8%);
- For consolidation between 1.5 and 4 cm, there is a statistical significance between bacterial and viral infections (p 0.022), and they were more expressed in bacterial pneumonia (55.22%);
- For consolidation > 4 cm, there is a statistical significance between bacterial and viral infections (p value < 0.001) and between bacterial and atypical infections (p value < 0.001). They were more expressed in bacterial infections (22.39%) and poorly expressed in viral infections (1.54%).

Multiple and bilateral consolidation are infrequent in bacterial infections, making them statistically significant to distinguish bacterial pneumonia from viral and atypical diseases (p < 0.0001).

We also considered air bronchogram, that was highly represented in bacterial (77.61%) and atypical (60.47%) ALRTI. There is a statistical significant difference between bacterial infections and viral infections (p value \leq 0.001) and between viral infections and atypical infections (p value = 0.004). Different characteristics of the air bronchogram have been taken into consideration:

Table 3 Differences of the ultrasound features in community acquired pneumonia with three etiological causative agents

Characteristics lung US	Bacterial infection <i>n</i> =67	Viral infection <i>n</i> =76	Atypical infection <i>n</i> =43	<i>p</i> value
Consolidation	67 (100)	65 (85.53)	38 (88.37)	B-V: 0.001 V-A:0.66 B-A: 0.004
Size consolidation				
< 1.5 cm	15 (22.39)	41 (63.8)	19 (50)	B-V: < 0.001 V-A: 0.19 B-A: 0.004
1.5–4 cm	37 (55.22)	23 (35.38)	17 (44.74)	B-V: 0.022 V-A: 0.347 B-A: 0.301
> 4 cm	15 (22.39)	1 (1.54)	2 (5.26)	B-V: < 0.001 V-A: 0.306 B-A:0.022
Multiple consolidations	5 (7.46)	28(43.8)	13 (34.21)	B-V: < 0.001 V-A: 0.375 B-A: < 0.001
Bilateral consolidations	6 (0.09)	31(46.15)	12 (31.58)	B-V: < 0.001 V-A: 0.146 B-A:0.004
Air bronchogram	52(77.61)	25 (32.89)	26 (60.47)	B-V: < 0.001 V-A:0.004 B-A:0.053
Position air bronchogram				
Deep	28 (53.85)	14 (56)	6 (23.08)	B-V: 0.859
Superficial	24 (46.15)	11 (44)	20 (76.92)	V-A:0.016 B-A: 0.010
Bronchogram				
Dynamic	22 (44)	9 (37.50)	18 (69.23)	B-V: 0.596
Static	28 (56)	15 (62.50)	8 (30.77)	V-A:0.025 B-A:0.037
Fluid bronchogram	22 (32.84)	3 (3.95)	4 (9.30)	B-V: < 0.001 V-A:0.233 B-A:0.003
Pleural effusion	33 (49.25)	12 (15.79)	7 (16.28)	B-V: < 0.001 V-A:0.94 B-A: < 0.001
Complicated effusion	3 (10.34)	0	2 (33.33)	B-V: 0.374 V-A: 0.192 BA: 0.143
Vertical deep artifacts	39 (58.21)	67 (88.16)	28 (88.37)	B-V: < 0.001 V-A: 0.972 B-A: 0.001
Vertical deep artifacts				
Diffuse	17 (44.74)	17 (44.74)	55 (78.57)	B-V: < 0.001 V-A:0.341
Peri-lesion	21 (56.6)	15 (21.43)	11(29.73)	B-A: 0.025
Vertical deep artifacts				
Confluent	1 (2.63)	4 (5.71)	0	B-V: 0.467 V-A:0.123 B-A:0.5

– Position: deep air bronchogram was found in 53.85% of bacterial pneumonia and 56% of viral pneumonia; superficial air bronchogram was almost always present in the atypical pneumonia (76.92%). Position is a valid

statistical parameter to distinguish atypical infection from the bacterial one (p value = 0.010) and the viral one (p value = 0.010); however, it is not a statistically

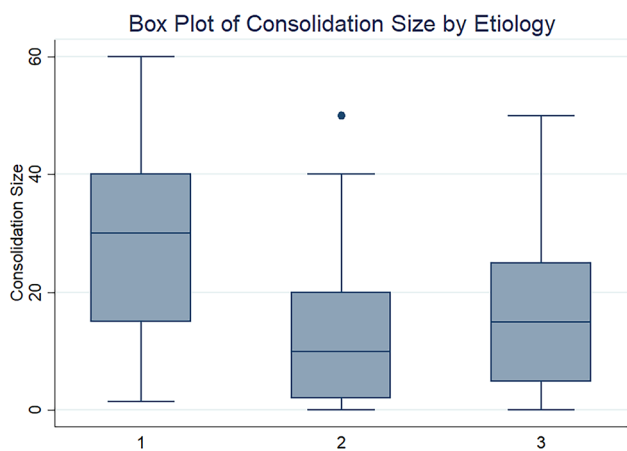


Fig. 3 Box plot of consolidation size by etiology

significant parameter for distinguish between the bacterial and viral pneumonia (p value = 0.859);

- Dynamic bronchogram was often found in atypical infections (69.23%) and moderately represented in bacterial (44%) and viral (37.50%) infections. Static bronchogram were found in 56% of cases in bacterial forms, 62.50% of cases in viral forms and in 30.77% of cases in atypical forms ($p > 0.05$).
- The presence of fluid bronchogram was more frequently described in case of bacterial pneumonia compared with viral ($p < 0.001$) and atypical pneumonia (p 0.003).

Pleural effusions were significantly more frequent in children with bacterial ALRTI ($p < 0.0001$). Complicated effusion was not represented in viral forms.

We also assessed vertical deep artifacts. They were frequently found in the viral (88.16%) and atypical (88.37%) infections, and moderately found in the bacterial ones (58.21%). Children with viral and atypical pneumonia had significantly more vertical deep artifacts compared with bacterial pneumonia ($p < 0.001$ and p 0.001, respectively), while there were no significant differences between viral and atypical pneumonia ($p > 0.05$). Also the distribution of the vertical deep artifacts in the three groups, being significantly more diffuse in children with viral (78.57%) and atypical (70.27%) ALRTI ($p < 0.05$), while children with bacterial ALRTI mainly had vertical artifacts located in continuity with the main consolidation.

Tables 4, 5 and 6 show the multivariable logistic regression analyses applied to compared the three main groups.

Interobserver agreement

We made interobserver agreement on a random set of 10% images. The levels of interobserver agreement were good (values of coefficient between 0.6 and 0.8) for air

Table 4 Logistic regression model analyzing the diagnostic (clinical, laboratory and US) predictors for bacterial infection versus viral infection in community acquired pneumonia

B-V infection	OR	z	p	95% (CI)	
Gender (female vs. male)	0.75	-0.46	0.643	0.22	2.57
Age (years)	1.23	2.43	0.015	1.04	1.44
Large sized consolidation	13.62	2.08	0.038	1.16	159.88
Multiple consolidation	0.24	-1.42	0.154	0.03	1.72
Bilateral consolidation	0.23	-1.43	0.152	0.03	1.72
Air bronchogram	6.58	2.69	0.007	1.67	25.93
Deep vertical artifacts	0.27	-1.88	0.060	0.07	1.06
Pleural effusion	1.48	0.61	0.543	0.42	5.16
CRP > 100 mg/L	15.94	3-43	0.001	3.28	77.50
Chest pain	0.47	-0.80	0.426	0.07	2.99
Decreased air entry (auscultation)	0.75	-0.46	0.643	0.22	2.57
Constant	0.30	-1.12	0.261	0.04	2.46

The model showed that the likelihood of the bacterial etiology increased significantly of more than 13 times for the large sized consolidation ($p = 0.039$; OR: 13.62; 95% CI 1.16–159.88). The air bronchogram occurred more than six times in the bacterial community pneumonia. ($p = 0.007$; OR: 6.58; 95% CI 0.67–25.93). The CRP value of 100 mg/L was about 15 times as much associated with bacterial etiology ($p = 0.001$; OR: 15.94; 95% CI 3.28–77.50). In addition, the more age increased, the greater the likelihood of bacterial etiology ($p = 0.015$; OR: 1.23; 95% CI 1.04–1.44)

OR odds ratio, z regression coefficient divided by its standard error, 96% CI 95% confidence interval

bronchogram position (deep, superficial) and motion (static, dynamic), while was above 0.8 (confirming a high interobserver agreement) for consolidation size, effusions, presence and distribution of vertical artifacts.

Table 5 Logistic regression model analyzing the diagnostic (clinical laboratory and US) predictors for viral infection versus atypical infection in community acquired pneumonia

V-A	OR	Z	p	95% (CI)	
Gender (female vs. male)	0.41	-1.35	0.176	0.11	1.49
Age (years)	0.93	-1.00	0.319	0.80	1.07
Air bronchogram	0.14	-2.84	0.004	0.04	0.55
Cough	0.33	-1.25	0.210	0.06	1.87
Respiratory distress	8.35	1.80	0.073	0.82	84.56
Crackles (at auscultation)	0.58	-0.80	0.426	0.15	2.23
CRP < 50 mg/L	4.15	1.74	0.082	0.84	20.66
Constant	13.27	2.47	0.014	1.70	103.56

The model showed that the detection of air bronchogram at lung US reduced by 86% the odds of viral CAP ($p = 0.004$; OR: 0.14; 95% CI 0.04–0.55)

OR Odds ratio z regression coefficient divided by its standard error, 96% CI 95% confidence interval

Table 6 Logistic regression model analyzing the diagnostic (clinical, laboratory and US) predictors for bacterial infection versus atypical infection in community acquired pneumonia

B-A	OR	z	p	95% (CI)	
Gender (female vs. male)	0.36	-1.04	0.30	0.05	2.48
Age (years)	0.81	-1.81	0.07	0.65	1.02
Small sized consolidation	0.82	-0.18	0.86	0.09	7.65
Air bronchogram	0.41	-0.72	0.47	0.04	4.57
Pleural effusion	12.70	1.88	0.06	0.89	180.29
Bilateral consolidation	0.26	-0.59	0.56	0.00	24.26
Multiple consolidation	0.36	-0.56	0.57	0.01	12.72
Deep vertical artifacts	1.00				
CRP < 50 mg/dL	0.06	-2.43	0.02	0.01	0.58
Cough	0.27	-0.85	0.40	0.01	5.46
Respiratory distress	1.00				
Decreased air entry	0.53	-0.61	0.54	0.07	4.10
Constant	310.84	2.33	0.02	2.50	38,716.21

The model showed that the value of CRP < 50 mg/dL reduced by 94% the odds of bacterial etiology compared with atypical etiology ($p=0.02$; OR: 0.06; 95% CI 0.01–0.58)

OR odds ratio, z regression coefficient divided by its standard error, 96% CI 95%

Discussion

Our prospective study is one of the largest prospective studies assessing the role of detailed LUS features to discriminate bacterial, viral and atypical ALRTI in children. We found that the size, number and distribution of consolidations, the position and motion of air bronchograms, pleural effusions and distribution of vertical artifacts significantly differ in children with bacterial, viral and atypical ALRTI. Such differences were particularly relevant when bacterial ALRTIs were compared with viral and atypical ones. Conversely, clinical parameters, including fever, chest pain and main auscultation features, and laboratory were not able to significantly distinguish between these groups. CXR, despite being still widely used, was the less useful tool in this discrimination. These findings highlight, therefore, the need of using new tools to support the etiological classification of pediatric ALRTI. We proved that several LUS features may easily support clinicians in this using the LUS along with available clinical, anamnestic and laboratory data.

Given the increasing phenomenon of antibiotic resistance in children, the possibility of knowing the etiology of the infection represents an important step forward. The first decade of LUS studies focused on the role of LUS in detecting pneumonia. A recently performed meta-analysis confirmed high sensitivity (96%) and specificity (93%) of LUS for detecting pneumonia in children [4]. First studies showed specific LUS patterns to diagnose viral lower respiratory tract infections and bronchiolitis in children

[28–31]. Buonsenso and colleagues [15, 24] showed that specific LUS patterns on diagnosis and after 48 h of treatments (bronchograms, consolidation size, characteristics of pleural effusion) were predictive of antibiotic response in children with ALRTI, more than clinical data and laboratory results. Moreover, recent basic science and clinical studies are clarifying the knowledge of and genesis of artifacts generated by the ultrasound-lung interaction. In particular, performing physical analyses on artificial models and using modern deep learning strategies and train a fully convolutional neural network, Demi and colleagues [32–34] showed that B-lines have different morphologies according to the medical conditions that generate them (interstitial lung diseases, cardiogenic and non-cardiogenic lung edema, interstitial pneumonia and lung contusion).

The ultrasound analyzes (vertical artifacts, consolidations, echogenicity, bronchograms, and dynamic data) offered by our study represent a modern view of LUS which, in this way, may represent a new and promising tool to personalize the diagnosis, treatment, follow-up and care of children with ALRTI, as recently highlighted by international experts [35]: during the last decades, LUS moved from being a diagnostic tool (qualitative approach) to a monitoring tool for lung aeration quantification (ie, quantitative approach). Artificial intelligence softwares, since we are entering the era of the digital medicine (a process particularly speed-up by the COVID-19 pandemic), will also support this view [36].

To date, few studies have described LUS findings able to define the etiology of pediatric. In particular, Berce et al. [19] evaluated 147 children hospitalized because of ALRTI, showing that LUS detected consolidations in viral pneumonia were significantly smaller, with a median diameter of 15 mm, compared to 20 mm in atypical bacterial LRTIs ($p=0.05$) and 30 mm in bacterial LRTIs ($p<0.001$). Other authors also highlighted that consolidation size or distribution can support the diagnosis of viral bronchiolitis, Influenza pneumonia and COVID-19 pneumonia [21, 28–30, 37]. These findings were comparable with our study. However, our study has evidenced more important LUS features not previously assessed. We found that air bronchograms were more common in bacteria and atypical ALRTI but, importantly, fluid bronchograms were almost exclusively described in bacterial cases. Also, complicated pleural effusions were never described in viral ALRTIs. Vertical artifacts, which gained more interest during the last year and in particular since LUS has been routinely used in COVID-19 pneumonia [21, 37–40], also played a significant role, since in bacterial ALRTI were mainly located in proximity of the main consolidation, while in the others were mostly diffuse and bilateral.

Considering the well-known advantages of LUS (a low-cost, easily reproducible, non-invasive tool that does not

cause pain and damage induced by radiations), all the ultrasound findings obtained by our study can have an important impact on the daily pediatric clinical practice. LUS, particularly when used in adjunction to clinical examination by experienced operators, can support the etiological of pneumonia and offer a personalized approach to patients. If further confirmed, this approach can also support antibiotic stewardship programs.

Our study has limitations to address. The gold standard for the diagnosis of ALRTI is the chest CT scan; however, its routine use in children is not ethical in children so we did not do the CT. Therefore, the diagnosis of ALRTI for the inclusion of patients in our study was made on a clinical bases according to the available guidelines [18]. The stratification of patients according to the etiology cannot be 100% accurate, since the definitive microbiological diagnosis in non-mechanically ventilated children is difficult to establish, since bronchoalveolar lavages are invasive procedures. However, to date all studies assessing the microbiological diagnoses of ALRTI, including vaccine-probe study [41], have the same limitation that is difficult to address.

Another limitation of our study is that of not having included in the multivariable logistic regression model analysis a more specific and detailed relationship between individual etiological agents and ultrasound characteristics to make readers better understand if there were differential ultrasound identification rates of individual pathogens and therefore if there are differences in lung ultrasound findings caused by single pathogen in particular viral and atypical. Unfortunately, however, with regard to the individual viral agents (in the context of viral pneumonia) and the individual atypical agents (in the context of atypical pneumonia), we did not carry out the aforementioned correlation analyzes between the ultrasound findings and single viral or atypical pathogen because each group of single isolated pathogen (such as “RSV group” or “rhinovirus group” or “adenovirus group” or “mycoplasma group” etc.) was not sufficiently numerous to be used for a correlation analysis between a single pathogen and the associated ultrasound characteristics.

Nevertheless, we used a comprehensive assessment of each child including clinical, laboratory, imaging and microbiological data, including last generation molecular assays. On this regard, a limit is that we did not use quantitative assessments of nasopharyngeal PCR results that, according to recent studies in adult patients, have been positively associated with a diagnosis of ALRTI other than simple colonization [42].

In light of the great progress of pediatric clinical ultrasound in other sectors [43–50], our study confirms that prospects in the field of personalized medicine can also be growing for lung ultrasound.

In conclusion, our study provides a detailed analysis of LUS features able to predict the etiology ALRTI in children.

These findings may help the physicians to better manage a child with ALRTI and to offer personalized approach, from diagnosis to treatment and follow-up. However, further studies on pediatric ALRTI are necessary to confirm our findings.

Funding Open access funding provided by Università Cattolica del Sacro Cuore within the CRUI-CARE Agreement. No funds received.

Availability of data and material Available upon request.

Declarations

Conflict of interest Nothing to declare.

Ethics approval The study was approved by the Institutional Review Board and Ethic Committee of Fondazione Policlinic Universitario A. Gemelli IRCCS, Rome, Italy (prot.36173/19 ID2729).

Consent to participate Informed consent was obtained by all participants and/or their legal guardians (for children younger than 16 years). There is no identifying information or image in the article.

Consent for publication Approved.

Open Access This article is licensed under a Creative Commons Attribution 4.0 International License, which permits use, sharing, adaptation, distribution and reproduction in any medium or format, as long as you give appropriate credit to the original author(s) and the source, provide a link to the Creative Commons licence, and indicate if changes were made. The images or other third party material in this article are included in the article’s Creative Commons licence, unless indicated otherwise in a credit line to the material. If material is not included in the article’s Creative Commons licence and your intended use is not permitted by statutory regulation or exceeds the permitted use, you will need to obtain permission directly from the copyright holder. To view a copy of this licence, visit <http://creativecommons.org/licenses/by/4.0/>.

References

1. Rudan I, Tomaskovic L, Boschi-Pinto C, Campbell H, WHO Child Health Epidemiology Reference Group (2004) Global estimate of the incidence of clinical pneumonia among children under five years of age. *Bull World Health Organ* 82(12):895–903
2. Haq IJ, Battersby AC, Eastham K, McKean M (2017) Community acquired pneumonia in children. *BMJ* 356:j686
3. Gereige RS, Laufer PM (2013) Pneumonia. *Pediatr Rev* 34(10):438–456
4. Pereda MA, Chavez MA, Hooper-Miele CC et al (2015) Lung ultrasound for the diagnosis of pneumonia in children: a meta-analysis. *Pediatrics* 135(4):714–722
5. Shah SN, Bachur RG, Simel DL, Neuman MI (2017) Does this child have pneumonia?: The rational clinical examination systematic review. *JAMA* 318(13):1284
6. Lipshaw MJ, Eckerle M, Florin TA et al (2020) Antibiotic use and outcomes in children in the emergency department with suspected pneumonia. *Pediatrics* 145(4):e20193138

7. Jain S, Williams DJ, Arnold SR et al (2015) Community-acquired pneumonia requiring hospitalization among US children. *N Engl J Med* 372(9):835–845
8. Jehan F, Nisar I, Kerai S et al (2020) Randomized trial of amoxicillin for pneumonia in Pakistan. *N Engl J Med* 383(1):24–34
9. Bradley JS, Byington CL, Shah SS et al (2011) The management of community-acquired pneumonia in infants and children older than 3 months of age: clinical practice guidelines by the Pediatric Infectious Diseases Society and the Infectious Diseases Society of America. *Clin Infect Dis* 53(7):e25–e76
10. Korppi M, Don M, Valent F, Canciani M (2008) The value of clinical features in differentiating between viral, pneumococcal and atypical bacterial pneumonia in children. *Acta Paediatr* 97:943–947
11. Flood RG, Badik J, Aronoff SC (2008) The utility of serum C-reactive protein in differentiating bacterial from nonbacterial pneumonia in children: a meta-analysis of 1230 children. *Pediatr Infect Dis J* 27(2):95–99
12. Korppi M, Heiskanen-Kosma T, Leinonen M (1997) White blood cells, C-reactive protein and erythrocyte sedimentation rate in pneumococcal pneumonia in children. *Eur Respir J* 10(5):1125–1129
13. Berg AS, Inchley CS, Fjaerli HO, Leegaard TM, Lindbaek M, Nakstad B (2017) Clinical features and inflammatory markers in pediatric pneumonia: a prospective study. *Eur J Pediatr* 176(5):629–638
14. Heiskanen-Kosma T, Korppi M (2000) Serum C-reactive protein cannot differentiate bacterial and viral aetiology of community-acquired pneumonia in children in primary healthcare settings. *Scand J Infect Dis* 32(4):399–402
15. Korppi M (2004) Non-specific host response markers in the differentiation between pneumococcal and viral pneumonia: what is the most accurate combination? *Pediatr Int* 46(5):545–550
16. Stockmann C, Ampofo K, Killpack J et al (2018) Procalcitonin accurately identifies hospitalized children with low risk of bacterial community-acquired pneumonia. *J Pediatric Infect Dis Soc* 7(1):46–53
17. O'Grady KF, Torzillo PJ, Frawley K, Chang AB (2014) The radiological diagnosis of pneumonia in children. *Pneumonia* (Nathan) 5(Suppl 1):38–51
18. Harris M, Clark J, Coote N et al (2011) British Thoracic Society guidelines for the management of community acquired pneumonia in children: update 2011. *Thorax* 66(Suppl 2):ii1–ii23
19. Berce V, Tomazin M, Gorenjak M, Berce T, Lovrenčić B (2019) The usefulness of lung ultrasound for the aetiological diagnosis of community-acquired pneumonia in children. *Sci Rep* 9(1):17957
20. Davis T (2013) NICE guideline: feverish illness in children—assessment and initial management in children younger than 5 years. *Arch Dis Child Educ Pract Ed* 98(6):232–235
21. Musolino AM, Supino MC, Buonsenso D, Roman Lung Ultrasound Study Team for Pediatric COVID-19 (ROMULUS COVID Team) et al (2020) Lung ultrasound in children with COVID-19: preliminary findings. *Ultrasound Med Biol* 46(8):2094–2098
22. Health NSW of infants and children: acute management of community acquired pneumonia clinical practice guideline. Infants and children: acute management of community acquired pneumonia (nsw.gov.au)
23. Elemraïd MA, Muller M, Spencer DA et al (2014) Accuracy of the interpretation of chest radiographs for the diagnosis of paediatric pneumonia. *PLoS ONE* 9(8):e106051
24. Musolino AM, Tomà P, Supino MC et al (2019) Lung ultrasound features of children with complicated and noncomplicated community acquired pneumonia: a prospective study. *Pediatr Pulmonol* 54(9):1479–1486
25. Buonsenso D, Brancato F, Valentini P, Curatola A, Supino M, Musolino AM (2020) The use of lung ultrasound to monitor the antibiotic response of community-acquired pneumonia in children: a preliminary hypothesis. *J Ultrasound Med* 39(4):817–826
26. Lazzareschi I, Valentini P (2020) Aspiration pneumonia in children with neurological disorders: a new indication for lung ultrasound? A case series. *J Ultrasound*. <https://doi.org/10.1007/s40477-020-00520-4>
27. Stadler JAM, Andronikou S, Zar HJ (2017) Lung ultrasound for the diagnosis of community-acquired pneumonia in children. *Pediatr Radiol* 47(11):1412–1419
28. Biagi C, Pierantoni L, Baldazzi M et al (2018) Lung ultrasound for the diagnosis of pneumonia in children with acute bronchiolitis. *BMC Pulm Med* 18(1):191
29. Tsung JW, Kessler DO, Shah VP (2012) Prospective application of clinician-performed lung ultrasonography during the 2009 H1N1 influenza A pandemic: distinguishing viral from bacterial pneumonia. *Crit Ultrasound J* 4(1):16
30. Buonsenso D, Musolino AM, Gatto A, Lazzareschi I, Curatola A, Valentini P (2019) Lung ultrasound in infants with bronchiolitis. *BMC Pulm Med* 19(1):159
31. Copetti R, Cattarossi L (2008) Ultrasound diagnosis of pneumonia in children. *Radiol Med* 113(2):190–198
32. Demi M, Prediletto R, Soldati G, Demi L (2020) Physical mechanisms providing clinical information from ultrasound lung images: hypotheses and early confirmations. *IEEE Trans Ultrason Ferroelectr Freq Control* 67(3):612–623
33. van Sloun RJG, Demi L (2020) Localizing B-lines in lung ultrasonography by weakly supervised deep learning, in-vivo results. *IEEE J Biomed Health Inform* 24(4):957–964
34. Soldati G, Demi M, Smargiassi A, Inchingolo R, Demi L (2019) The role of ultrasound lung artifacts in the diagnosis of respiratory diseases. *Expert Rev Respir Med* 13(2):163–172
35. Mongodi S, Santangelo E, De Luca D et al (2020) Quantitative lung ultrasound: time for a consensus? *Chest* 158(2):469–470
36. Demi L, Demi M, Prediletto R, Soldati G (2020) Real-time multi-frequency ultrasound imaging for quantitative lung ultrasound—first clinical results. *J Acoust Soc Am* 148(2):998
37. Buonsenso D, Parri N, De Rose C, Valentini P, Gemelli-pediatric COVID-19 team (2021) Toward a clinically based classification of disease severity for paediatric COVID-19. *Lancet Infect Dis* 21(1):22
38. Parri N, Lenge M, Cantoni B et al (2020) COVID-19 in 17 Italian pediatric emergency departments. *Pediatrics* 146(6):e20201235
39. Volpicelli G, Lamorte A, Villén T (2020) What's new in lung ultrasound during the COVID-19 pandemic. *Intensive Care Med* 46(7):1445–1448
40. Volpicelli G, Gargani L (2020) Sonographic signs and patterns of COVID-19 pneumonia. *Ultrasound J* 12(1):22
41. Obaro SK, Madhi SA (2006) Bacterial pneumonia vaccines and childhood pneumonia: are we winning, refining, or redefining? *Lancet Infect Dis* 6(3):150–161
42. García-Rodríguez JA, Fresnadillo Martínez MJ (2002) Dynamics of nasopharyngeal colonization by potential respiratory pathogens. *J Antimicrob Chemother* 50(Suppl S2):59–73
43. Brillantino C, Rossi E, Minelli R et al (2019) A rare case of renal tumor in children: clear cell sarcoma. *G Chir* 40(3):217–224 (PMID: 31484012)
44. Vitale V, Rossi E, Di Serafino M et al (2018) Pediatric encephalic ultrasonography: the essentials. *J Ultrasound*. <https://doi.org/10.1007/s40477-018-0349-7>
45. Tufano A, Minelli R, Rossi E et al (2020) Inferior epigastric artery pseudoaneurysm secondary to port placement during a robot-assisted laparoscopic radical cystectomy. *J Ultrasound*. <https://doi.org/10.1007/s40477-020-00442-1>
46. Brillantino C, Rossi E, Bifano D et al (2020) An unusual onset of pediatric acute lymphoblastic leukemia. *J Ultrasound*. <https://doi.org/10.1007/s40477-020-00461-y>

47. Minella R, Minelli R, Rossi E et al (2020) Gastroesophageal and gastric ultrasound in children: the state of the art. *J Ultrasound*. <https://doi.org/10.1007/s40477-020-00471-w>
48. Botta F, Raimondi S, Rinaldi L et al (2020) Association of a CT-based clinical and radiomics score of non-small cell lung cancer (NSCLC) with lymph node status and overall survival. *Cancers* 12:1432
49. Tufano A, Minelli R, Di Lascio G, Delicato G, Baffigo G, Signore S (2020) Infected kidney stone progressing to perinephric abscess and thoracic empyema. *Arch Ital Urol Androl*. 92(3). <https://doi.org/10.4081/aiua.2020.3.203>
50. Brillantino C, Rossi E, Baldari D et al (2020) Duodenal hematoma in pediatric age: a rare case report. *J Ultrasound*. <https://doi.org/10.1007/s40477-020-00545-9>

Publisher's Note Springer Nature remains neutral with regard to jurisdictional claims in published maps and institutional affiliations.